

The following is a collection of 16 games I compiled from the 2013 Kansas Open. The effort took quite a number of hours. Selection criteria was first, I wanted to put as many games as I could by Conrad Holt. There are four of his games: two at the beginning and two at the end. The next criteria for inclusion: I had to be able to read the score sheets and follow the game. The games had to contain no mistakes in notation. Often having two copies of score sheets helped. A couple of games I had to piece together with a logical sequence. The games had to be interesting. I tried to have some games from the Reserve section, but many of the games in this section either had rather obvious errors that decided the games (e.g. a piece left en prise) or I simply could not follow the games due to some missing moves or difficult to read notation. I found many games in the Open section that ended in draws that I did not include. That is my next project to go through all these drawn games. I included mainly decisive games. I hope you enjoy the games. If you have a game that you thought was worthwhile and I did not include it please e-mail me at wlcoker7@hotmail.com

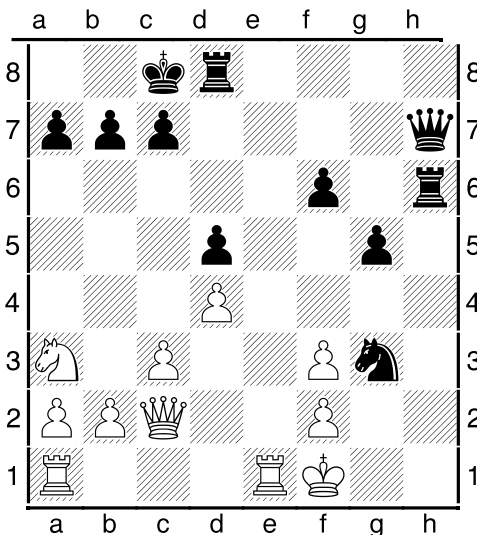
GAMES

- (1) Frank Smith vs. Conrad Holt (Open)
- (2) Conrad Holt vs. Tom Braunlich (Open)
- (3) Marshal Lusk vs. Jason Winters (Reserve)
- (4) Raymond Griffin vs. Bob Holliman (Open)
- (5) Joe Woehl vs. Nathan Yu (Reserve)
- (6) Colby Stuckman vs. Jeremiah Beyale (Reserve)
- (7) Judson Temple vs. John Schuller (Open)
- (8) Gabriel Purdy vs. Tom Phillips (Reserve)
- (9) Nick Shearer vs. Daniel Gollub (Open)
- (10) James Cummings vs. Laurence Coker (Reserve)
- (11) Rick Hodges vs. Ben Gradsky (Open)
- (12) John Pritchard vs. Tony Cheng (Open)
- (13) Duane Johnson vs. Nathan Yu (Reserve)
- (14) Dmitry Sokolenko vs. Terry Wright (Open)
- (15) Conrad Holt vs. Steve Wharry (Open)
- (16) Conrad Holt vs. Ron Luther (Open)

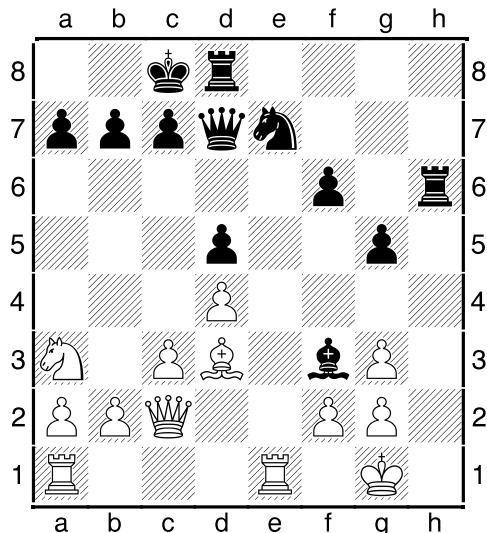
(1) Frank Smith (1985) - Conrad Holt (2636) [C01]

2013 Kansas Open Overland Park (2), 13.07.2013

C01: French: Exchange Variation 1.e4 e6 2.d4 d5 3.exd5 exd5 4.Nf3 Bd6 5.Bd3 Bg4 6.0-0 Nc6 7.Re1+ Nge7 8.c3 Qd7 9.Bg5 f6 10.Bh4 0-0-0 last book move 11.Bg3 Bxg3 12.hxg3 h5 13.Qc2 h4 14.Nxh4 g5 15.Ng6 Nxg6 16.Bxg6 Ne7 17.Na3? [17.Nd2 Nxg6 18.Qxg6 \mp (-0.54)] 17...Rh6 18.Bd3? [18.Bf7 Rf8 19.f3 Rxf7 20.fxg4 Rfh7 21.Kf2 Qxg4 22.Qe2 Qf5+ 23.Qf3 \mp (-0.68)] 18...Bf3! Diagram



22.fxg3 Rh1+ 23.Ke2 Re8+ 24.Kd2 Rh2+ 25.Kd1 Rxe1+ 26.Kxe1 Rxc2 0-1

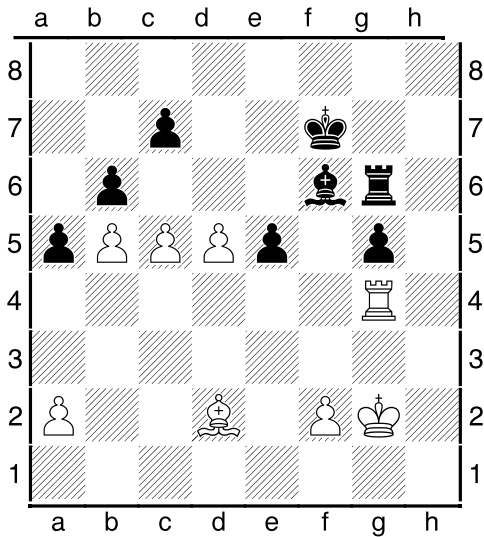


19.Bf5 Nxf5 [19...Rdh8! 20.Bxd7+ Kb8 21.Qh7 R6xh7 22.Bh3 Rxh3 23.gxh3 (23.gxf3 Rh1+ 24.Kg2 R8h2#) 23...Rxh3 24.Rxe7 Rh1#] 20.gxf3 Qh7 21.Kf1 Nxg3+ Diagram

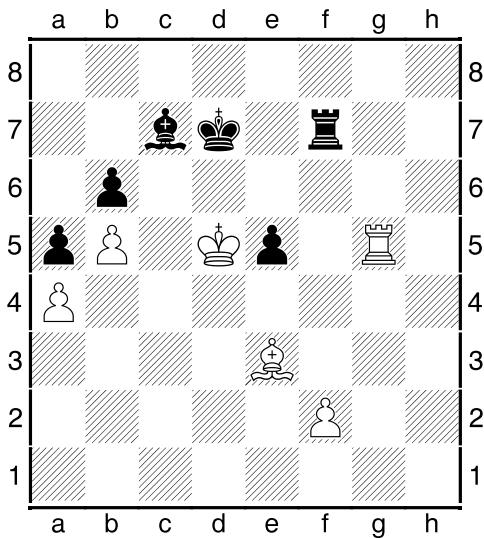
(2) Conrad Holt (2636) – Tom Braunlich (2201) [E90]

2013 Kansas Open (5), 14.07.2013

E90: King's Indian: Classical: Early deviations and 6 h3 1.d4 Nf6 2.c4 g6 3.Nc3 Bg7 4.e4 d6 5.Nf3 0-0 6.h3 e5 7.d5 Nh5 8.g3 last book move 8...f5 9.exf5 gxf5 10.Ng5 Nf6 11.Bg2 Qe7 12.0-0 h6 13.Nf3 Na6 14.Rb1 Nc5 15.Nh4 Qf7 16.b4 Nce4 17.Nxe4 Nxe4 18.Qc2 a5 19.Nxf5 Bxf5 20.Bxe4 Bxh3 21.b5 [21.Re1 \pm (0.40)] 21...b6 [21...Bxf1 22.Kxf1 b6=] 22.Re1 Bf5 23.Bxf5 Qxf5 24.Qxf5 Rxf5 25.g4 Rf3 26.Be3 Raf8 27.Kg2 e4 28.Re2 R8f6 29.Rg1 Rg6 30.Kf1 Be5 31.g5 hxg5 32.Rg4 Bf6 33.Kg2 Rf5 34.Bd2 Kf7 35.Rexe4 Re5 36.Rxe5 dxe5 37.c5 Diagram



37...Be7 38.cxb6= [38.d6 Another idea. 38...cxd6 (38...Bd8 39.dxc7 Bxc7 40.Rc4 ±(1.25)) 39.cxb6 d5 40.Bxa5 Rg8 41.a4+- (2.04)] **38...cxb6 39.a4 Rd6 40.Kf3 Rxd5 41.Be3 Bd8 42.Ke4 Ke6 43.Rg1 Rd7 44.Rh1 Rf7 45.Rh8 Bc7 46.Rg8 Rh7 47.Rg6+ Kd7 48.Kd5= Rf7** [48...Rh4 Better 49.Bxb6 Bxb6 50.Rxb6 Rxa4 51.Kxe5=] **49.Rxg5** Diagram



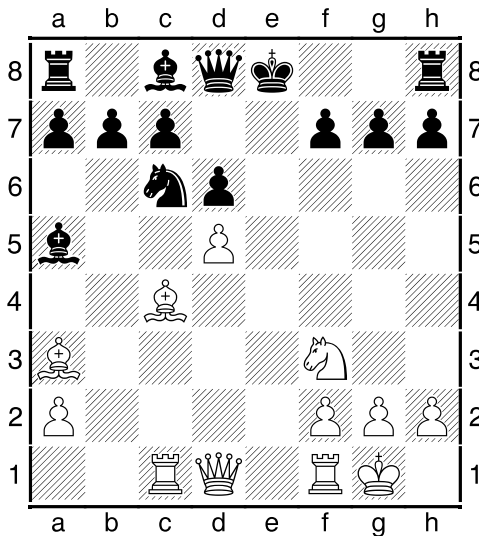
49...Re7? [49...Kc8 50.Rg6 Kb7 ±(0.36)] **50.Rg6 Rf7 51.Rh6 Bd8**

52.Rd6+ [52.Bxb6 Fritz says this is better 52...Bxb6 53.Rxb6 Rxf2 54.Rd6+ Kc7 55.Ra6 +-(2.94)] **52...Kc8 53.Rc6+** [53.Kc6 Fritz likes this better, though Rc6 works as well 53...Rf8+-] **53...Kb7 54.Kxe5 Bc7+ 55.Ke6 Rh7 56.Rc4** Black resigned as he is low on time and a pawn down. **1-0**

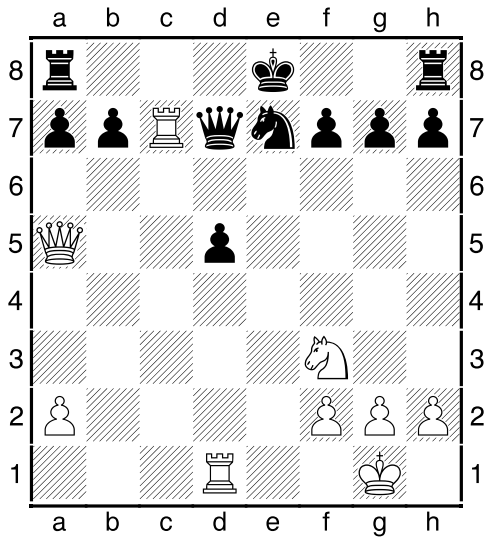
(3) Marshal Lusk – Jason Winters (1569) [C54]

2013 Kansas Open (5), 14.07.2013

C54: Giuoco Piano: 4 c3 Nf6, main lines with 5 d4 and 5 d3 **1.e4 e5 2.Nf3 Nc6 3.Bc4 Bc5 4.c3 Nf6 5.d4 exd4 6.cxd4 Bb4+ 7.Nc3 Nxe4 8.0-0 Nxc3 9.bxc3 Bxc3 10.Ba3 d6 11.Rc1 Ba5** last book move **12.d5** Diagram



[12.Qa4! Bd7 13.d5 Nd4 14.Qxa5 Nxf3+ 15.gxf3 0-0 +-(1.83)] **12...Ne7 13.Qa4+ c6 14.Bxd6** [14.dxc6 bxc6 15.Nd4 0-0 16.Nxc6 Nxc6 17.Qxc6 Bf5 ±(0.78)] **14...Qxd6 15.Qxa5 cxd5 16.Rfd1 Be6 17.Bb5+ Bd7 18.Bxd7+ Qxd7 19.Rc7** Diagram

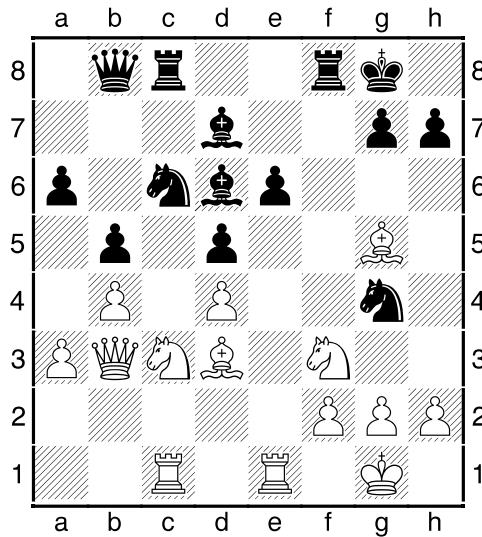


19...Qd8? Losing move [19...b6
 20.Qc3 Rc8 21.Qxg7 Rg8 22.Qxf7+
 Kxf7 23.Rxd7 ±(1.33)] **20.Re1 b6**
21.Rxe7+ Qxe7 22.Rxe7+ Kxe7
23.Qxd5 Rhd8 24.Qb7+ Kf8
 [24...Rd7? 25.Qe4+!] **25.g3 Rdb8**
26.Qc7 f6 27.Nh4 Rc8 28.Qd6+ Kf7
29.Qd7+ Kg8 30.Nf5 Kf8 31.Qe7+
Kg8 32.Qxg7# 1-0

**(4) Raymond Griffin (1887) –
 Bob Holliman (2200) [C06]**

2013 Kansas Open (1), 13.07.2013

C06: French Tarrasch: 3...Nf6 4 e5
 Nfd7 5 Bd3 main lines 1.e4 e6 2.d4 d5
 3.Nd2 Nf6 4.e5 Nfd7 5.Bd3 c5 6.c3
 Nc6 7.Ndf3 cxd4 8.cxd4 f6 9.exf6
 Nxf6 10.Ne2 Bd6 11.0-0 Qc7 12.Nc3
 a6 13.Bg5 0-0 14.Rc1 Bd7 last book
 move 15.a3 Rac8 16.b4 b5 17.Qb3
 Qb8 18.Rfe1? Ng4! Diagram



19.h3? [19.Ne2 Better, though still
 losing 19...h6 20.Bh4 -+(-1.90)]
19...Bh2+ 20.Kf1 [20.Nxh2 Qxh2+
 21.Kf1 Rxf2#; 20.Kh1 Nxf2#] **20...Nxf2**
 [20...Nxd4 Works also 21.Bxh7+ Kxh7
 22.Qb1+ Kg8 23.hxg4 Nxf3 24.gxf3
 Rxf3 -+(-5.24)] **21.Kxf2?** [21.Ne2
 Nxh3 22.Bd2 Bg3 23.Bxh7+ Kxh7
 24.gxh3 Bxe1 25.Kxe1 -+(-4.31)]
21...Qg3+ [21...Rxf3+ Works also] **0-1**

**(5) Joe Woehl (1228) – Nathan
 Yu (1553) [D05]**

2013 Kansas Open (4), 13.07.2013

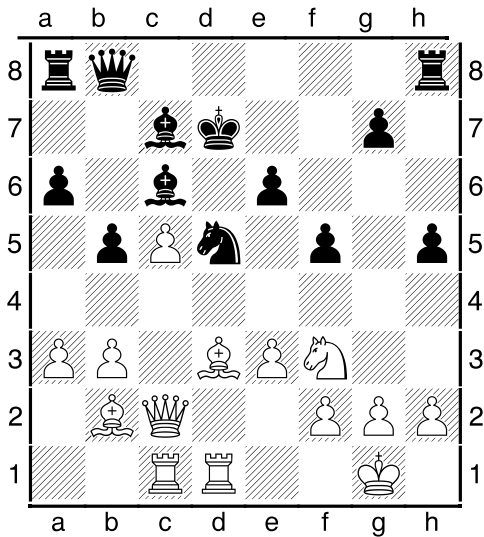
D05: Colle System with ...e6 1.d4 Nf6
 2.Nf3 b6 3.e3 e6 4.Bd3 d5 5.0-0 Bb7
 6.Nbd2 Nbd7 7.b3 c5 8.Bb2 Qc7
 9.Qe2 last book move 9...a6 10.Rac1
 Bd6 11.c4 Qb8 12.cxd5 Nxd5 13.Nc4
 Bc7 14.Nce5 f6? [14...Nxe5 15.Nxe5
 Bxe5 16.dxe5 0-0 ±(0.87)] 15.Nxd7
 Kxd7 The king is now in the middle of
 the board and subject to attack
16.dxc5 b5? 17.Rfd1 f5 18.a3 h5
19.Qc2 Bc6 Diagram

30.Qe6# 1-0

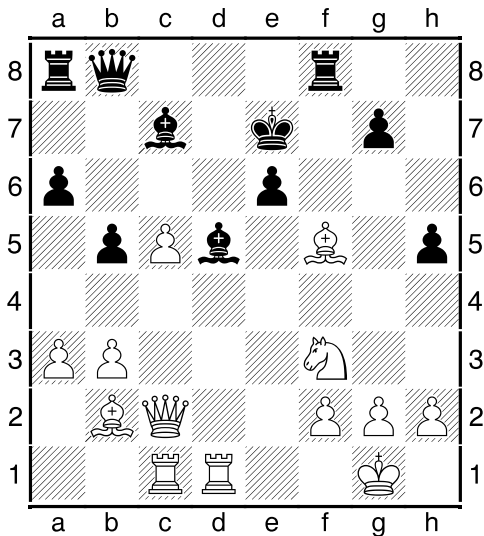
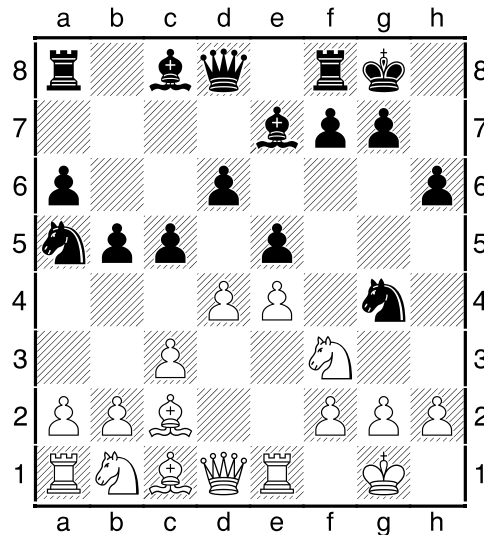
(6) Colby Stuckman (1638) – Jeremiah Beyale (1320) [C78]

2013 Kansas Open (3), 13.07.2013

C78: Ruy Lopez: Archangelsk and
Möller Defences 1.e4 e5 2.Nf3 Nc6
3.Bb5 a6 4.Ba4 b5 5.Bb3 h6 6.0-0
Nf6 last book move 7.Re1 Be7 8.c3 0-0
9.d4 d6 10.Be3 Na5 11.Bc2 Ng4
12.Bc1 c5 Diagram



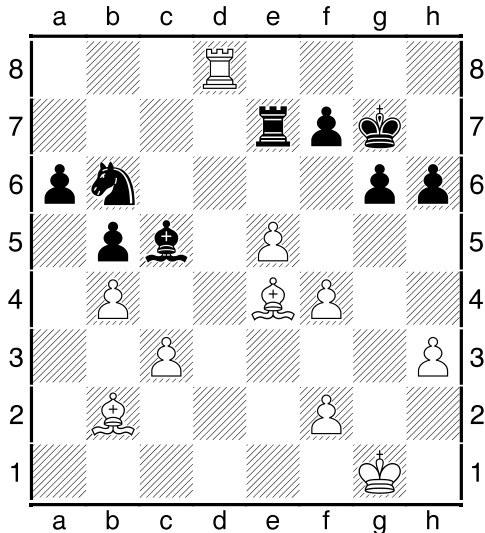
20.Bxf5 Rf8 [20...exf5? 21.Qxf5+ Ke7
22.Qg5+ Kd7 23.e4+- (12.16)] 21.e4
Ke7 [21...exf5 22.exd5 Bb7? (22...Qe8
23.dxc6+ Kxc6 24.Bxg7 Rf7 25.Qc3+-
(12.31)) 23.c6+ Kd8 24.d6+-; 21...Rxf5
22.exf5 Qe8 23.fxe6+ Qxe6 24.Ng5
Qg4 25.Qg6+- (10.31)] 22.exd5 Bxd5
Diagram



23.Rxd5! exd5 24.Qe2+ Kd8 25.Qe6
Qc8 26.Qxd5+ Ke7 27.Re1+ Be5
28.Rxe5+ Kf6 29.Bxc8 Rfxc8

13.h3 Nf6 14.dxe5 dxe5 15.Nxe5 Qc7
16.Nf3 Nc4?! [16...Bb7 Better 17.Qe2
Rad8 ±(1.11)] 17.Nbd2 Rd8 18.Qe2
Ne5 19.Nxe5 Qxe5 20.Nf3 Qc7 21.b3
[21.e5 Nd7? (21...Nd5 22.Qe4 g6
23.Bxh6 Bf5 24.Qe2 +-(3.16);
21...Nh7 22.Qe4 Nf8 23.Qxa8 Not sure
how many people would go for this
queen for two rooks continuation even
though white still has an advantage.
23...Bb7 24.Qa7 Ra8 25.Qxb7 Qxb7
26.Be4 Qc8 27.Bxa8 Qxa8 +-(1.88))
22.e6!+- (3.34)] 21...Bb7 22.Bb2 c4
23.Rad1 Bc5 24.Nd4 cxb3 25.axb3
Rac8 26.Nf5 Qe5 27.Rxd8+ Rxd8

28.Nd4 Re8 29.Nf3 Qg3 30.e5 Bxf3
 31.Qxf3 Qxf3 32.gxf3 Nd7? [32...Nd5
 Better] 33.f4 g6 34.Rd1 Nb6 35.Be4
 Re7? Losing move. The bishop has no
 square 36.Rd8+ Kg7 37.b4! Diagram

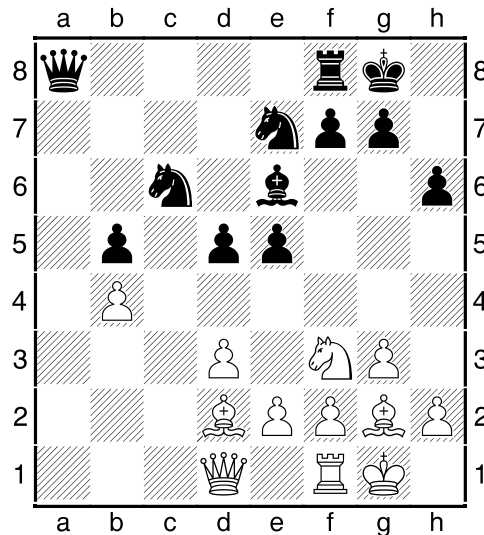


37...Nc4 38.bxc5 Nxb2 White has
 gotten the better of the exchange as
 he has a powerful passed pawn.
 39.c6 Rc7? [39...Na4 Necessary,
 though still losing. 40.Rd7 Kf8 41.c7
 Nb6 42.Rd8+ Kg7 43.c8Q Nxc8
 44.Rxc8 +-(4.28)] 40.Rd7 Rc8 41.c7
 Na4 42.Bb7 Black resigns 1-0

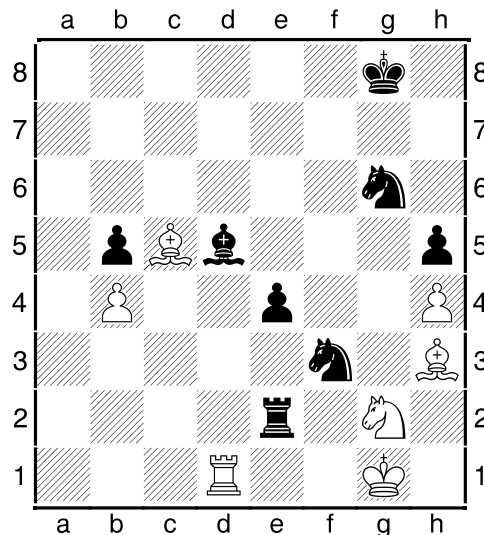
(7) Judson Temple (1884) – John Schuller (1821) [A21]

2013 Kansas Open (4), 08.08.2013

A21: English Opening: 1...e5 2 Nc3
 1.c4 e5 2.Nc3 Bb4 3.Nd5 Be7 4.g3
 last book move 4...c6 5.Nxe7 Nxe7
 6.Bg2 d5 7.cxd5 cxd5 8.Nf3 Nbc6
 9.d3 0-0 10.0-0 h6 11.Bd2 Be6 12.b4
 a6 13.a4 b5 14.axb5 axb5 15.Rxa8
 Qxa8 Diagram



16.Qa1? [16.Qc2=] 16...e4 17.dxe4
 dxe4 18.Qxa8 Rxa8 19.Ne1 Ra2
 20.Be3 Bd5 21.f3 f5 22.g4 Rxe2
 23.Bc5 g6 24.h4 h5? [24...exf3 Better
 25.Bxf3 Bxf3 26.Nxf3 fvg4 -+(-3.64)]
 25.gxf5 gxf5 26.fxe4 fxe4 27.Bh3
 Ng6 28.Ng2 Nce5 29.Rd1 Nf3+=
 Diagram



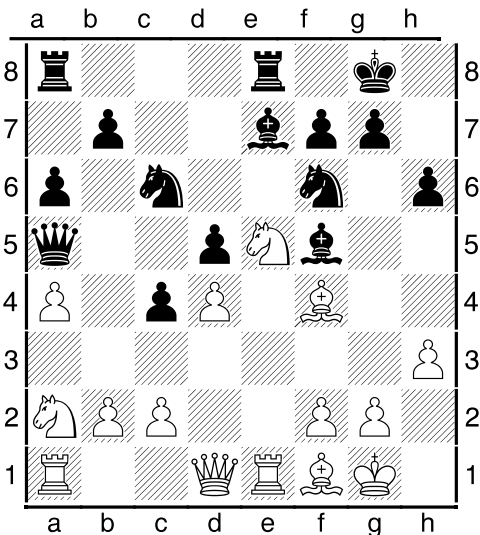
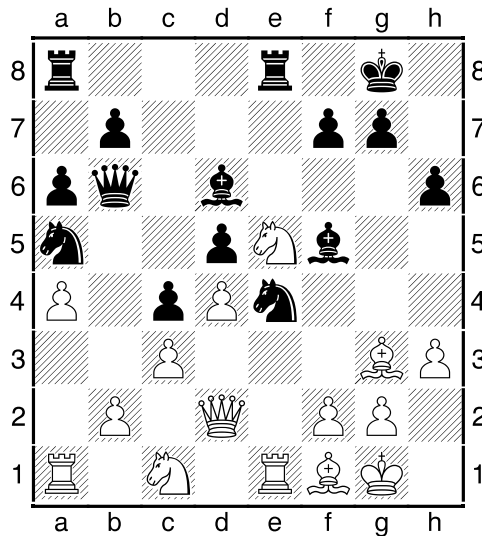
30.Kh1?? Losing move. Sets up
 mating nets with white king in the
 corner. [30.Kf1= Rd2 31.Rxd2 Nxd2+
 32.Ke2 Nf3 33.Bd7 Bc4+ 34.Ke3 Bd3
 35.Nf4=] 30...Nf4 31.Rxd5 Nxb3
 32.Rf5 Nf2+ 33.Bxf2 Rxf2 White

resigns 0-1

(8) Gabriel Purdy (1376) – Tom Phillips (1700) [C11]

2013 Kansas Open (4), 14.07.2013

C11: French: Classical System: 4 e5 and 4 Bg5 dxe4 1.e4 e6 2.d4 d5 3.Nc3 Nf6 4.Bd3 h6 5.Nf3 last book move 5...c5 6.exd5 exd5 7.0-0 c4 8.Re1+ Be7 9.Bf1 0-0 10.h3 a6 11.a4 Nc6= 12.Bf4 Bf5 13.Na2?! Re8 14.Ne5 Qa5 Diagram



15.c3 [15.Nc3 Better with slight disadvantage. 15...Qb6 16.Nxc6 bxc6 17.Rb1 \bar{r} (-(-0.67))] 15...Qb6 16.Qd2 Na5 17.Nc1 Bd6 18.Bg3? [18.Qe3 Qxb2 19.Ra2 Qb6 20.Ne2 Bb1 21.Ra1 Bc2 22.Ra2 Bh7 $-$ (-1.48)] 18...Ne4 Diagram

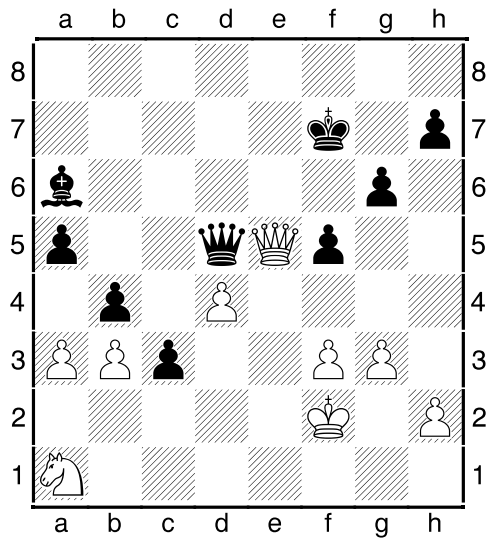
19.Qe2? [19.Qf4 Ugly, but better. Still losing though, just not as bad. Protects bishop on g3 and attacks black bishop on f5.] 19...Nxc3 20.fxc3 Bxe5 21.Kh1? [21.Qf2 Better, but still losing] 21...Bxc3 22.Qxe8+ Rxe8 23.Rxe8+ Kh7 White resigns. (There are numerous Black threats. 24. Re2 then Bg4 and not 25. hxg4 because of Qf6 and mate to follow. 25. Rd2 is met by Be1 and then 26.Rd2 and Bg1 winning the rook. If 24. Ne2 then Qxb2. 24. Ra2 does not help because of Bb1) 0-1

(9) Nick Shearer (1611) – Daniel Gollub (1935) [D70]

2013 Kansas Open (1), 13.07.2013

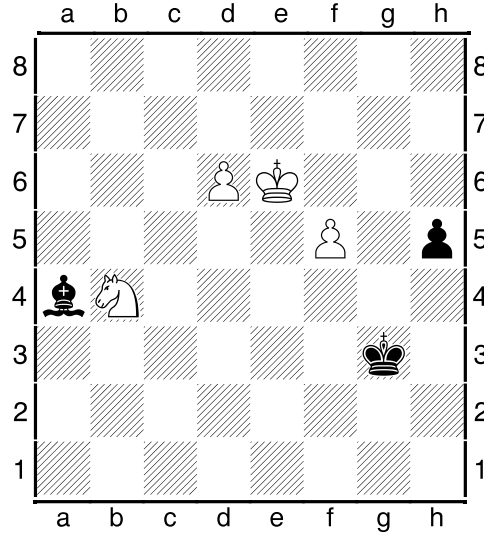
D70: Grünfeld: Unusual White 3rd moves (met by ...d5). Nick Shearer sent this game to me, not aware of my analysis by Fritz that shows he turned a won game into a drawn game on move number 53. Still it is an interesting endgame. 1.d4 Nf6 2.Nf3 d5 3.c4 c6 4.e3 g6 5.Bd3 Bg7 6.Nbd2

last book move **6...Nbd7 7.0-0 0-0 8.b3 c5 9.Bb2 b6 10.Ne5 Nxe5 11.dxe5 Ng4 12.cxd5 Nxe5 13.Bc4 Nxc4 14.Nxc4 Bxb2 15.Nxb2 f5 16.Nc4 b5 17.d6 Bb7 18.Na3 a6 19.dxe7 Qxe7 20.Qe2 Rfe8 21.Nc2 Rad8 22.Rfd1 Rxd1+ 23.Rxd1 Be4 24.Qd2 Rc8 25.Ne1 c4 26.f3 c3 27.Qc1 Bb7 28.Nc2 Rd8 29.Kf2 b4 30.g3 a5 31.Rd4 Rxd4 32.exd4 Qd7 33.Qe3 Kf7 34.a3? Qd5 35.Na1 Ba6 36.Qe5** Diagram



36...Qb5? [36...Qxe5! 37.dxe5 bxa3 38.Ke3 Bb7 39.Kd3 (39.f4 Be4 40.Ke2 a2 41.Kd1 Ke7 42.Kc1 Kd7 43.Kd1 Kc6 44.Kc1 Kb6 45.Kd1 Kc5 46.Ke2 Kb4 47.Kd1 Bd5 48.Kc2 h6 49.h3 g5 -+(-10.92)) 39...Bxf3 40.Kxc3 Be4 41.b4 axb4+ 42.Kxb4 a2 43.Kc5 Ke6 44.Kd4 Bd5 45.h4 h6 46.Nc2 g5 47.h5 f4 48.gxf4 gxf4 49.Na1 f3 50.Ke3 Kxe5 -+(-14.92)] **37.Qxb5 Bxb5 38.axb4 axb4 39.Ke3 ±(0.61) 39...Bc6 40.Nc2 Bd5 41.Nxb4 Bxb3 42.Kd3 g5 43.Kxc3 Bd1 44.f4 gxf4 45.gxf4 Kg6?** [45...Ke6 Better, though white is still winning] **46.d5 Ba4 47.Kd4 Kh5**

48.Ke5 Kg4 49.d6 Kh3 [49...h5 Doesn't help 50.Nd5 h4 51.Ne3+ Kf3 52.Nxf5 +-(13.29)] **50.Kxf5 Kxh2 51.Ke6 Kg3 52.f5 h5** Diagram



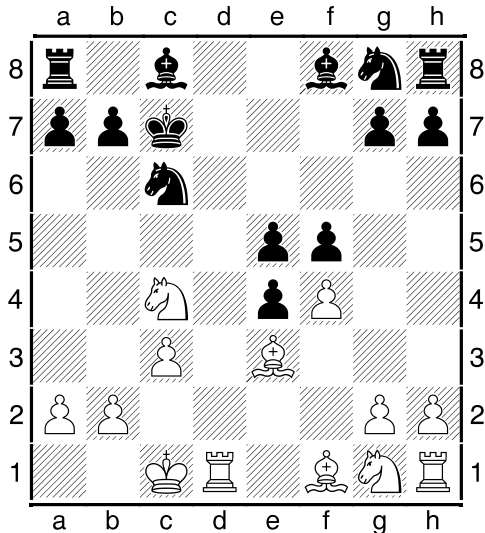
53.d7? [53.f6! h4 (53...Be8 54.d7 Bxd7+ 55.Kxd7 h4 56.f7 h3 57.f8Q h2+- (57...Kg2 58.Qf4 h2 59.Nd5 h1Q 60.Ne3+ Kh3 61.Qg4+ Kh2 62.Qh4+ Kg1 63.Qg3+ Mate in one) 58.Qf1 winning) 54.f7 h3 55.f8Q h2 56.Qg7+- (56.Qf1 Bb5 57.Qh1 Be2 58.Qe1+ Kf4) 56...Kf3 57.Qh7 Kg2 58.Qg6+ Kf3 59.Qd3+ Kg4 60.Qe4+ Kg3 61.Qh1 Bb5 62.d7+-] **53...Bxd7+ 54.Kxd7 h4 55.f6 h3 56.f7 h2 57.f8Q 1/2-1/2**

(10) James Cummings (1493) – Laurence Coker (1676) [B21]

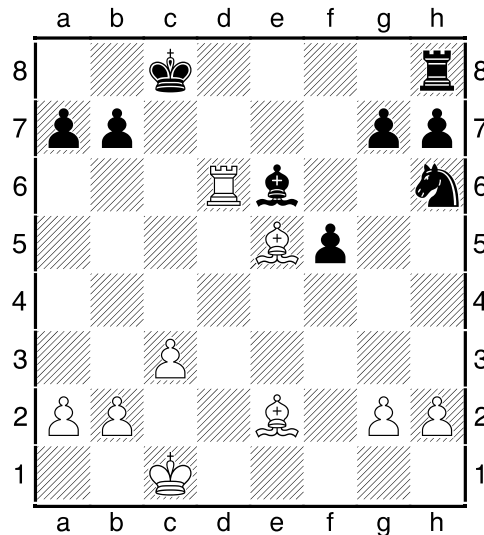
2013 Kansas Open (5), 14.07.2013

B21: Sicilian: 2 f4 and Morra Gambit **1.e4 c5 2.d4 cxd4 3.c3 d5** The Smith-Morra declined. **4.Qxd4** I had never seen this variation before five months ago and now I have seen it three times in a row. I had looked at it before but still played it incorrectly. The much

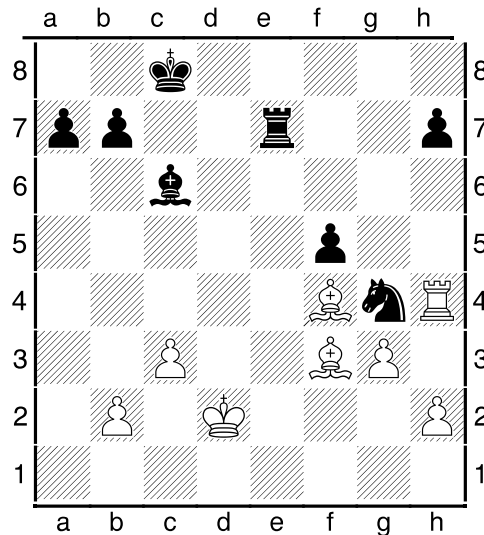
more common move is 4. exd5 Qxd5 which I have faced over half a dozen times before. 4...dxe4 5.Qxd8+ Kxd8 last book move 6.Be3 Nc6 7.Nd2 f5 8.0-0-0 Kc7 9.Nc4 e5 10.f4 Diagram



10...exf3? A bad mistake. Now white is not only going to get his pawn back but is going to have a better position. [10...Nf6 Much better 11.Nxe5 (11.fxe5 Ng4 12.Ne2 Be6 13.h3 Nxe3 14.Nxe3 \mp -1.39)) 11...Nxe5 12.fxe5 Ng4 13.Bd4 \mp (-0.83) 13...g6 14.h3? (14.Nh3 Bh6+ 15.Kc2 \mp (-1.08)) 14...Bh6+ 15.Kb1 Ne3 16.Re1 Nxf1 17.Rxf1 \mp (-1.73)] 11.Nxf3 Be6 12.Nfxe5 Nxe5 13.Bf4 Rd8 14.Bxe5+ Kc8 15.Be2 Nh6 16.Rxd8+ Kxd8 17.Rd1+ Kc8 18.Nd6+ Bxd6 19.Rxd6 Diagram

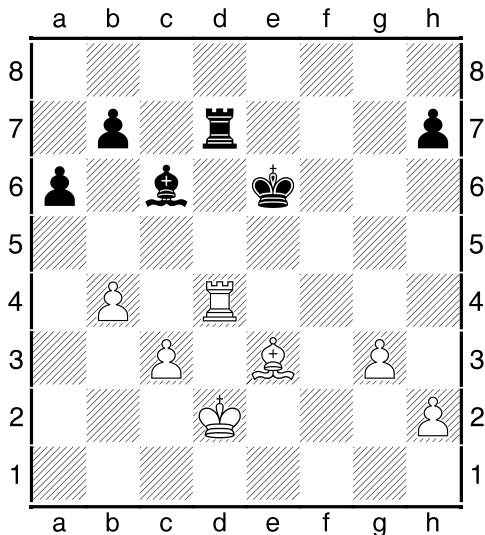


19...Re8? [19...Bxa2 20.Bxg7 Nf7 21.Rd2 Rg8 22.Bd4 Rxc2 \pm (0.71)] 20.Bxg7? [20.Bb5! Re7 21.Bxg7 Rxc2 22.Rxe6 Ng4 23.h3 Nf2 \mp (-1.60)] 20...Nf7 21.Rd2 Bxa2 22.Kc2 Be6 [22...Rg8 23.Bd4 Rxc2 This is too deep for me to see. It simply looks like it loses the bishop. 24.b3 Ng5 25.Kb2 Nf3 26.Rc2 Ne1 27.Rd2 f4=] 23.Bf6 Nd8 24.Bf3 Bd7 25.Rd4 Nc6 26.Rh4 Re6 27.Bg5 Rg6 28.Bf4 Rg7 29.Bh6 Rg6 30.g3 Ne5 31.Be2 Ng4 32.Bf4 Rg7 33.Kd2 Re7 34.Bf3 Bc6 Diagram



I thought this a good idea. Give up a

pawn to get opposite color bishops. All I would need to do then is exchange off rooks. I thought I had a distinct disadvantage with white having the two bishops. **35.Bxg4 fxc4 36.Rxg4 Kd7 37.Be3 a6 38.Rd4+ Ke6 39.b4? Rd7** Diagram

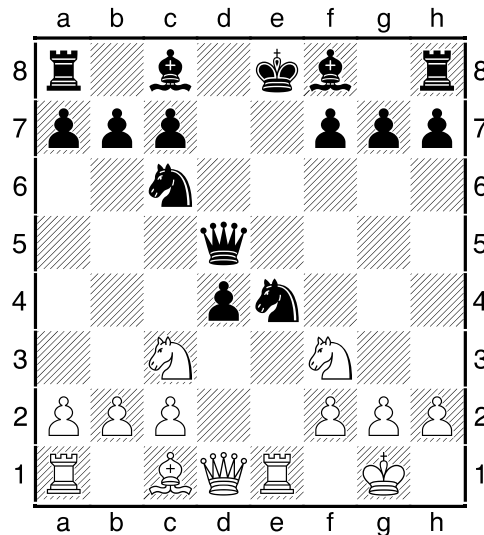


My plan fulfilled. I now achieved opposite colored bishop endgame. **40.g4 Rxd4+ 41.Bxd4 Bf3 42.g5 Kf5 43.h4 Kg4 44.Bf6 Kh5** The game continued on for 5 to 10 more before a draw was agreed. I had quit recording moves at this point. 1/2-1/2

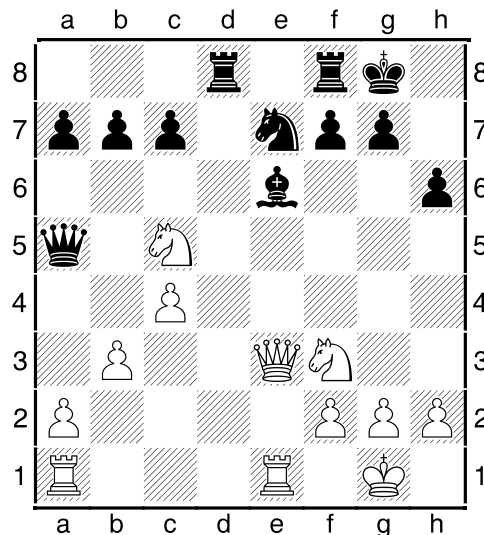
(11) Rick Hodges (1808) – Ben Gradsky (2098) [C56]

2013 Kansas Open (2), 13.07.2013

C56: Two Knights: 4 d4 exd4 5 0-0 Nxe4 1.e4 e5 2.Nf3 Nc6 3.d4 exd4 4.Bc4 Nf6 5.0-0 Nxe4 6.Re1 d5 7.Bxd5 Qxd5 8.Nc3= Diagram



8...Qa5 9.Nxe4 Be6 10.Bd2 Qd5 11.Bg5 Be7 12.Bxe7 last book move **12...Nxe7** [12...Kxe7 Better according to Fritz. Though many would not want to put their king opposite a rook.] **13.Qxd4 0-0 14.Qe3 h6 15.c4 Qa5** [15...Qxc4 16.Nc5 (16.Rec1?! Qb4 Slightly better for black.) 16...Nd5 17.Qd4 $\bar{\tau}$ (-0.42)] **16.b3 Rad8** [16...Rfe8 Slightly better.] **17.Nc5** Diagram



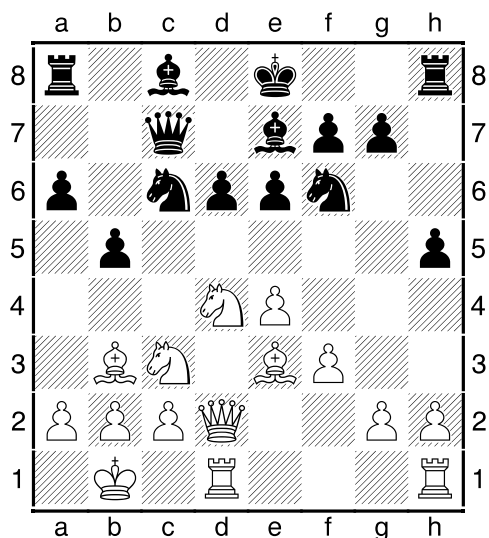
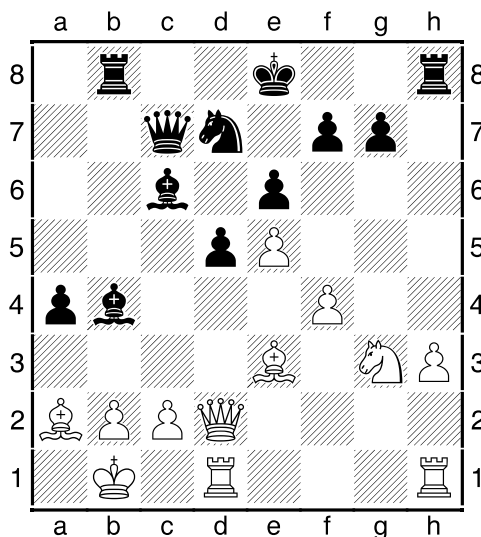
17...Nf5 18.Qe5 Bc8 19.Nxb7 Qxe5 20.Rxe5 Bxb7 21.Rxf5 Rfe8 22.Re5 There could follow 22. Bxf3 Rxe8 23.

Rxe8 gxf3 Re2 with minimal advantage for white despite being a pawn up in a rook and pawn endgame.
 1/2-1/2

(12) John Pritchard (1785) – Tony Cheng (1967) [B88]

2013 Kansas Open (1), 13.07.2013

B88: Sicilian: Sozin Attack 1.e4 c5 2.Nf3 d6 3.d4 cxd4 4.Nxd4 Nf6 5.Nc3 a6 6.Bc4 e6 7.Bb3 Nc6 8.Bg5 Be7 last book move 9.Qd2 h6 10.Be3 Qc7 11.f3 h5 12.0-0-0 b5 13.Kb1 Diagram



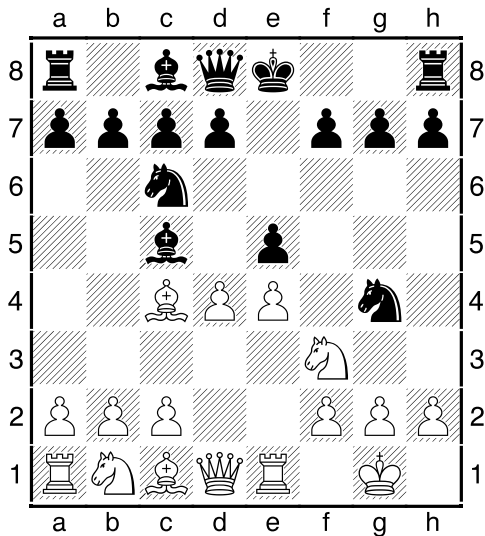
13...Rb8 14.h3 h4 15.Nce2 Bd7 16.g4 hxg3 17.Nxg3 a5 18.Nxc6 Bxc6 19.a3 a4= 20.Ba2 d5 21.e5? [21.Bf4 Better 21...Bd6 22.Bxd6 Qxd6 ±(1.25)] 21...Nd7 22.f4 b4 23.axb4 Bxb4 Diagram

24.c3? [24.Qd4 Better, though still losing] 24...Ba3 25.Bd4 Rxb2+ 26.Qxb2 Bxb2 27.Kxb2 a3+ 28.Ka1 Ba4 29.Rd2 Ke7 30.Rg2 Nc5 31.h4 g6 32.h5 gxh5 33.Nxh5 Ne4 34.Rh3 Bd1 White resigns 0-1

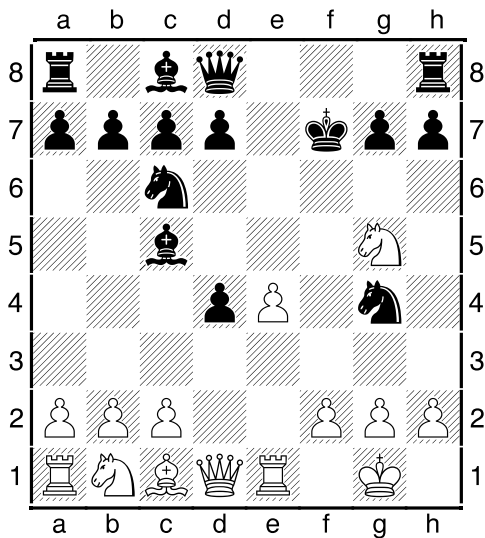
(13) Duane Johnson (1285) – Nathan Yu (1553) [C50]

2013 Kansas Open (2), 13.07.2013

C50: Hungarian Defence and Giuoco Pianissimo 1.e4 e5 2.Nf3 Nc6 3.Bc4 Bc5 4.0-0 Nf6 5.Re1 last book move 5...Ng4 6.d4 Diagram



6...exd4?! [6...Nxd4 7.Bxf7+ This doesn't work now, because 9. Qxg4 is followed by 9...Nxc2 (7.Nxd4? Qh4! 8.Qf3 Bxd4 -+(-2.56)) 7...Kxf7 8.Ng5+ Ke8 Better than 8...Kg8 (8...Kg8? 9.Qxg4 h6 10.c3 d6 11.Qg3 Nc2 12.Qd3 Threatens 13. Qd5+ and mate in one. 12...hxg5 13.Qxc2-+ (-3.05)) 9.Qxg4 Nxc2-+ (-1.43)] 7.Bxf7+ Kxf7 8.Ng5+ Diagram



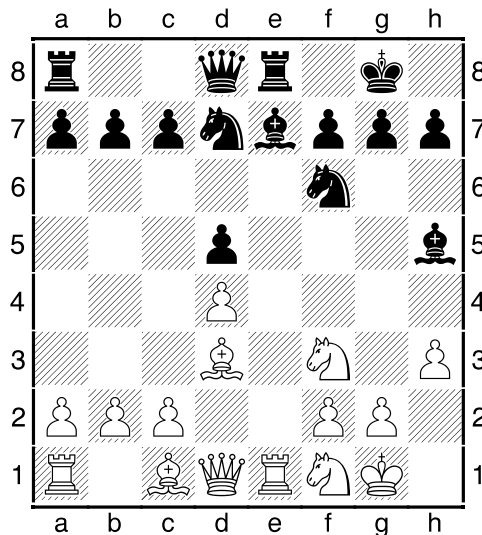
8...Kg6? [8...Kg8 Better square. 9.Qxg4 Qe7=; 8...Kf8 9.Qxg4 d6=]

9.Qxg4 Qe7?? 10.Qf5+ Kh5 11.g4+ Kh4 12.Nf3+ Kh3 13.Qh5+ Qh4 14.Qxh4# 1-0

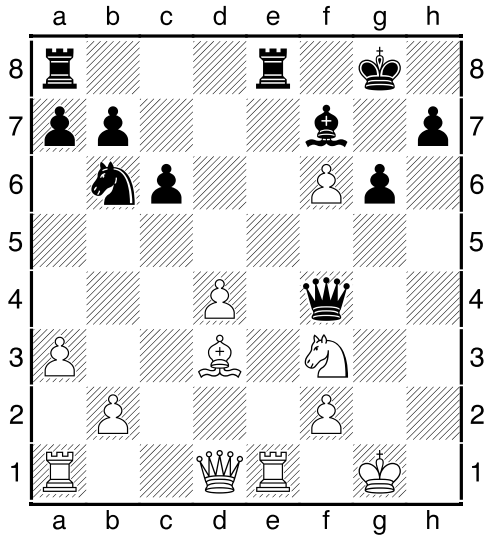
(14) Dmitry Sokolenko (2200) – Terry Wright (1897) [C01]

2013 Kansas Open (1), 13.07.2013

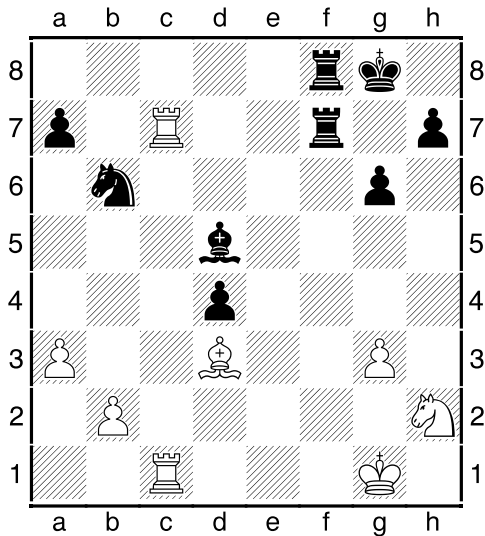
C01: French: Exchange Variation 1.e4 e6 2.d4 d5 3.exd5 exd5 4.Bd3 Nf6 5.Nf3 Bg4 6.0-0 Be7 7.Re1 0-0 last book move 8.h3 Bh5 9.Nbd2= Nbd7 10.Nf1 Re8 Diagram



11.c4 [11.Ng3 Better] 11...dxc4 12.Bxc4 Nb6 13.Be2 Nfd5 14.a3 Bf6 15.g4 Bg6 16.g5 Be7 17.h4 f6 18.Ng3 Bd6 19.h5 Bf7 20.h6 Nf4 21.Nf5 g6 22.Nxd6 Qxd6 23.Bxf4 Qxf4 24.gxf6 Qxh6 [24...Qg4+ 25.Kf1 Bd5 26.f7+ Bxf7 27.Ng1 Qh4-+ (-2.86)] 25.Bb5 [25.Qc1 Better 25...Qxc1 26.Raxc1 c6 27.b4 ♯-1.03] 25...c6 26.Bd3 Qf4 Diagram



27.Re7? [27.Ne5 Better] 27...Qxf6
 28.Rxb7 Bd5 29.Nh2 Rf8 30.Qd2 Qh4
 31.Qe3? [31.Re1 Better, though still losing] 31...c5 [31...Rxf2! Better
 32.Qxf2 Qg5+ 33.Kf1 (33.Ng4 Qxg4+ 34.Kh2 Rf8 35.Rb8 Qh5+ 36.Kg3 Qg5+ 37.Kh2 Rxb8-+ (-16.16)) 33...Rf8 34.Qxf8+ Kxf8-+ (-8.40)] 32.Rc7 cxd4 [32...Rxf2! Again better. 33.Qxf2 Qg5+ -+(-7.94); 32...c4 Also good.] 33.Qg3 Qxg3+ 34.fxg3 Rf7 35.Rac1 Raf8
 Diagram

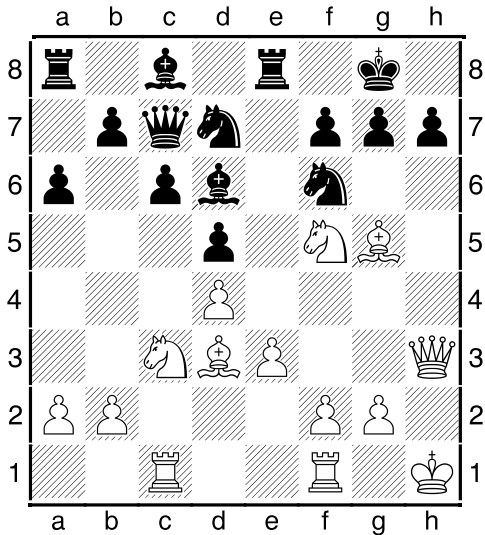


36.Ng4? [36.Rxf7 Necessary. 36...Rxf7 37.Rd1 ±(-1.20)] 36...Kg7? [36...Rf3! Much better. 37.Nh6+ Kh8 38.Rf1 Rxc3+ 39.Kh2 Rg2+ 40.Kh3 Rxf1 41.Bxf1 Rg1 42.Bb5 Rh1+ 43.Kg3 Rxh6-+ (-5.63)] 37.Ne5 Rxc7 38.Rxc7+ Kf6 39.Nd7+ Nxd7 40.Rxd7 Ke6 41.Rxa7 Rf3 42.Be2 Rxc3+ 43.Kf2 Rb3 44.Rxh7 Rxb2 45.Ke1 Be4 46.Bc4+ Ke5 47.a4 Kf4 48.Re7 Ke3 49.Rxe4+ Kxe4 50.a5 Ke3 51.Kf1 d3 52.a6 d2 53.Be2 Ra2 0-1

(15) Conrad Holt (2636) – Steve Wharry (1918) [D35]

2013 Kansas Open (1), 13.07.2013

D35: Queen's Gambit Declined: Exchange Variation 1.d4 d5 2.c4 e6 3.Nc3 Nf6 4.cxd5 exd5 5.Bg5 Nbd7 6.e3 c6 7.Bd3 Qa5 last book move 8.Nge2 Bd6 9.Ng3 0-0 10.Qf3 Re8 11.0-0 Qc7 12.Rac1 a6 13.Nf5 Bxh2+ 14.Kh1 Bd6 15.Qh3 Diagram



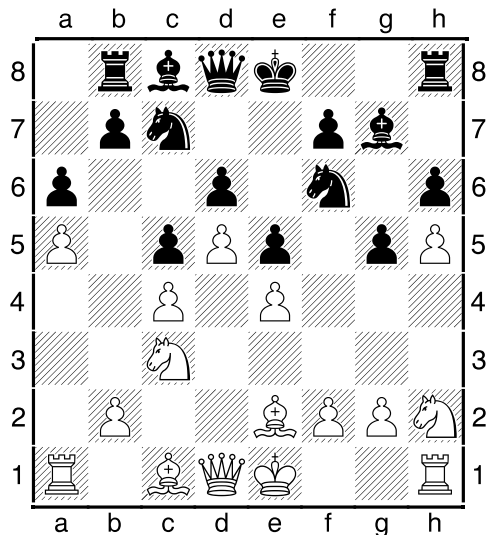
15...Bf8? Losing move [15...h5 ±(0.57)] 16.Nxd5! Nxd5 There really isn't a good move here. Fritz suggests

the ridiculous 16...Qh2+ 17. Qxh2 cxd5 17.Ne7+ Black resigns as it is mate in three 1-0

(16) Conrad Holt (2638) – Ron Luther (2212) [A44]

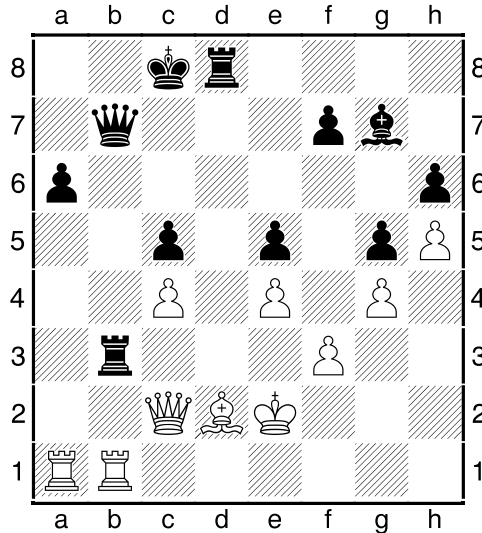
2013 Kansas Open (3), 13.07.2013

A44: Semi-Benoni 1.d4 g6 2.c4 Bg7 3.Nf3 c5 4.d5 e5 5.e4 d6 6.Nc3 Na6 last book move 7.Be2 Nc7 8.h4 Nf6 9.Nh2 a6 10.a4 h6 11.a5 Rb8 12.h5 g5?! Diagram



[12...Nxh5 13.Bxh5 gxh5 14.Qxh5 b5 15.axb6 Rxb6 ±1.22)] 13.Nf1 b5 14.axb6 Rxb6 15.Ne3 Bd7 16.Bd3 Qc8 17.Bc2 Ng4 18.Nxg4 Bxg4

19.Ba4+ Ke7 20.f3 Bd7 21.g4 Rb4 22.b3 Bxa4 23.Nxa4 Qb7 24.Nxc5 dxc5 25.d6+ Kd7 26.dxc7+ Kxc7 27.Bd2 Rd8 28.Ke2 Kc8 29.Qc2 Rxb3 30.Rhb1 Diagram



30...Rdd3? Losing move. Loses the exchange. [30...Rxb1 Black is still losing, but not as bad. 31.Rxb1 Qc6 (31...Qc7 32.Qa4 +-(1.57)) 32.Ba5 +-(1.62)] 31.Qxd3 Rxd3 32.Rxb7 Rxd2+ 33.Kxd2 Kxb7 Not only is black down the exchange, he has a bad bishop. 34.Kc2 Bf6 35.Rd1 Kc6 36.Rd5 Be7 37.Rxe5 Kd7 38.Rd5+ Kc6 39.Rf5 f6 40.e5 fxe5 41.Rxe5 Kd6 42.Rd5+ Kc6 43.Rf5 Kd7 44.Rf7 Black resigns 1-0