

## 2018 Kansas Open Reserve games

There were not as many game sheets turned in the Reserve section as Open section at the 2018 Kansas Open. The following are ones I could follow and thought were worthwhile. I came up with eleven games.

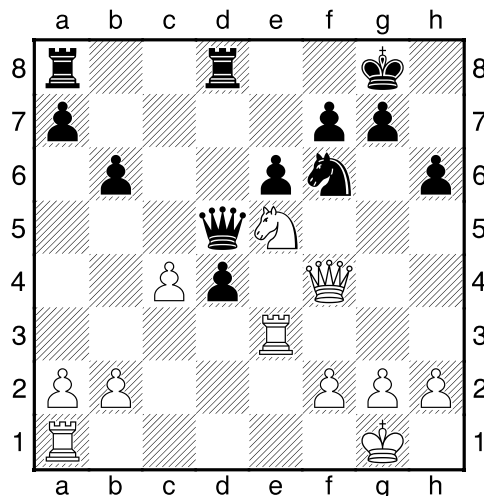
1. Joseph Paolercio 0: Sushen Kolakaleti 1
2. George Verhage 0: Sky Moerlien 1
3. Randy Merrell 0: Ryan Duan 1
4. Randy Merrell 0: Celina Zhou 1
5. Rick Hodges 0: Randy Merrell 1
6. Nathan Otten 0: Joseph Paolercio 1
7. Earney Patrick 0: Brycen Parker 1
8. Brycen Parker 1: Gary Levine 0
9. John Rebholz 1: John McDowell 0
10. CJ Armenta 1: Earney Patrick 0
11. Allen DeBoard 0: George Verhage 1

### (1) Paolercio,Joseph (1603) – Kolakaleti,Sushen (1707) [C13]

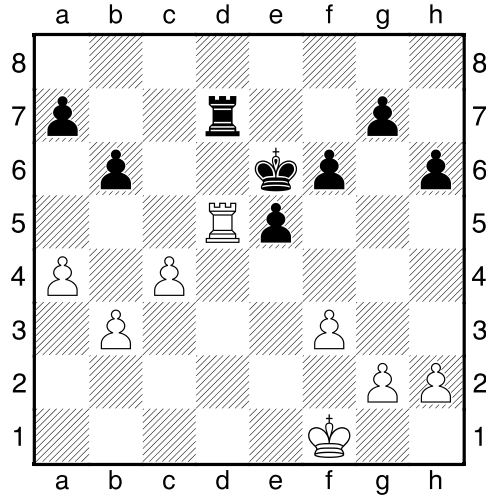
2018 Kansas Open (4), 15.07.2018

C13: French: Classical System: 4 Bg5 Be7, Alekhine–Chatard Attack  
**1.e4 e6 2.d4 d5 3.Nd2 dxe4 4.Nxe4 Nf6 5.Bg5 Be7 6.Bxf6 Bxf6  
7.Nf3 0-0 8.c3 b6 9.Bd3 Bb7 10.Qc2 h6 11.Nxf6+ Qxf6 12.Be4 last  
book move 12...Bxe4 13.Qxe4 Nd7 14.Qc6 Qd8 15.0-0 Nf6 16.Ne5  
Qd6 17.Rfe1 Rfd8 18.Qf3 Qd5 19.Qf4 c5 20.Re3 cxd4 21.c4**

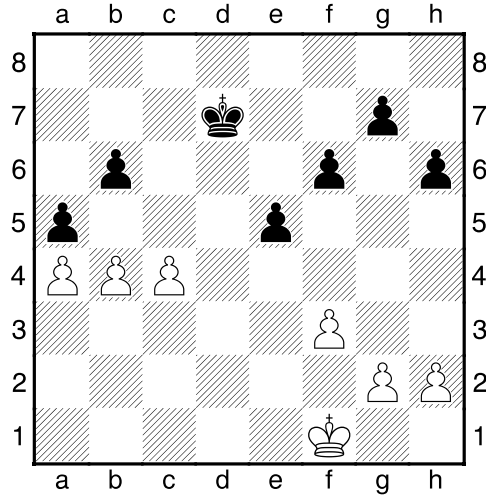
Diagram



**21...Qb7** [21...Qd6 better] **22.Rd3 Qe4 23.Qxe4 Nxe4 24.Rad1 f6**  
**25.Nc6 Rd6 26.Rxd4 Rxc6 27.Rxe4 Rac8 28.b3 R8c7 29.Red4 e5**  
**30.Rd5 Kf7 31.Kf1 Ke6** Black's king is closer to the center **32.a4** not  
sure this is correct, but white should be ok if rooks are left on the  
board. 32 a4 leaves a hole at b4 and black's king is closer than  
white's **32...Rc5 33.f3** [33.Rd6+ better to keep rooks on the board]  
**33...Rxd5 34.Rxd5 Rd7** Diagram



**35.Rxd7?** This appears to be a mistake to trade off rooks. White then  
goes into an inferior king and pawn endgame [35.Rb5 Rd1+ 36.Ke2  
Rb1 37.a5= Rb2+ 38.Kf1 bxa5 39.Rxa5 Rxb3 40.Rxa7 Rb1+ 41.Kf2  
Rb2+ 42.Kf1 g5 43.Rh7 Rb4 44.c5 Rc4 45.Rxh6 Rxc5=] **35...Kxd7**  
**36.b4** actually there are not any good moves for white if black plays  
correctly [36.Ke2 a5 37.Kd3 Kd6 38.Kc3 (38.h4; 38.g4) 38...f5  
39.Kd3? (39.h4) 39...Kc5 40.Kc3] **36...a5!** Diagram

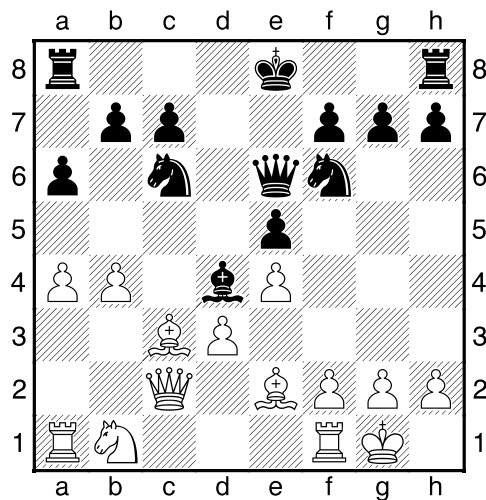


**37.Ke2?** this loses quickly, though the alternative 37.bxa5 also loses [37.bxa5 bxa5 38.Ke2 Kc6 39.Kd3 f5 -+ (-3.85)] **37...axb4 38.Kd3 Kc6 0-1**

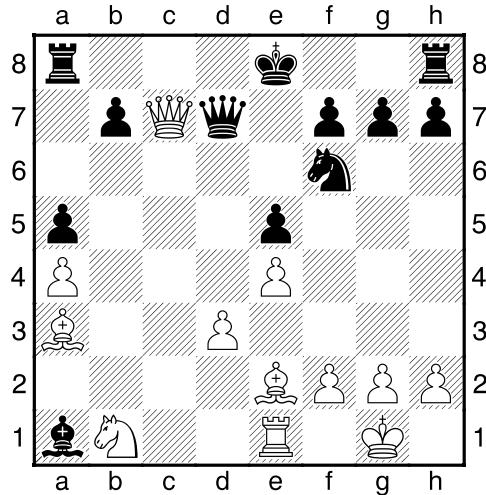
**(2) Verhage,George (1614) – Moerlien,Sky (1416) [C50]**

2018 Kansas Open (2), 14.07.2018

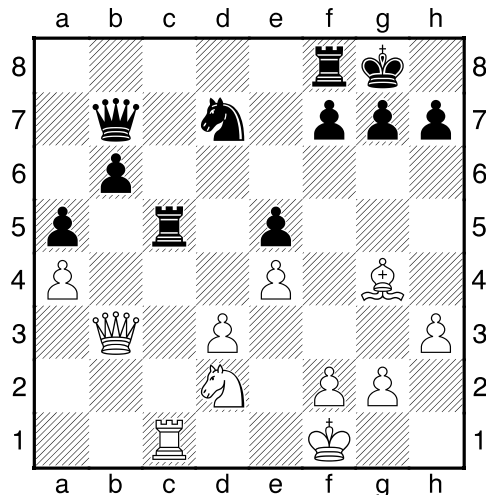
C50: Hungarian Defence and Giuoco Pianissimo **1.e4 e5 2.Nf3 Nc6 3.Bc4 Bc5 4.0-0 d6 5.c3 Bg4 6.b4 Bb6 7.a4 a6 last book move 8.Qb3 Qe7 9.Be2 Nf6 10.d3 Be6 11.Qc2 d5 12.Ng5 d4 13.Nxe6 Qxe6 14.Bb2 dxc3 15.Bxc3 Bd4** Diagram



**16.Re1?! [16.Nd2= better, then 16...Nxb4? doesn't work then 17.Bxb4 Bxa1 18.Rxa1 with advantage for white] 16...Nxb4 17.Bxb4 Bxa1 18.Qxc7 a5 19.Ba3 [19.Qxb7] 19...Qd7** Diagram

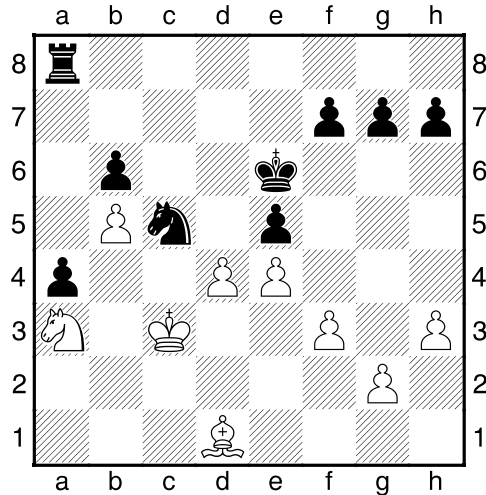


**20.Qc2? [20.Rc1= better and equal] 20...Rc8 21.Qb3 Bd4 22.h3 b6 23.Kf1 Qe6 24.Qb5+ Qc6 25.Qb3 Nd7 26.Bg4 Bc5 27.Rc1 0-0 28.Nd2 Qb7 29.Bxc5 Rxc5** Diagram



**30.Rxc5? [30.Rb1 is better though black still with some advantage] 30...Nxc5 31.Qb5 Qa6 32.Nc4? this gives black a powerful passed pawn [32.Qxa6 better though black still with advantage 32...Nxa6 33.Bd7 Nc5 34.Bb5 -+(-2.85)] 32...Qxb5 33.axb5 a4 34.Ke2 Ra8**

35.Na3 Kf8 36.Kd2 Ke7 37.Be2 Nb3+ 38.Kc3 Kd6 39.Bd1 Nc5  
40.f3 Ke6 41.d4? Diagram

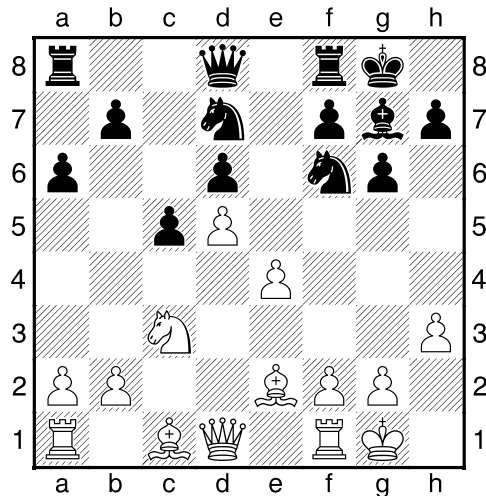


loses right away. **41...exd4+** white cannot take back with 42.Kxd4 as there follows 42....Rd8+ picking up the white bishop on d1 **0-1**

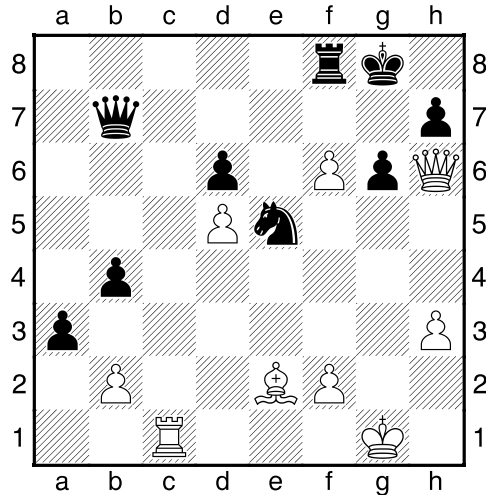
**(3) Merrell,Randy (1535) – Duan,Ryan (1710) [A73]**

2018 Kansas Open (2), 14.07.2018

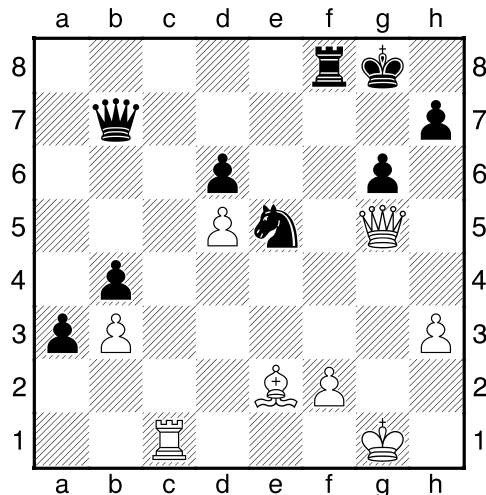
A73: Modern Benoni: Classical: Unusual Black 9th moves **1.c4 Nf6 2.Nc3 g6 3.Nf3 Bg7 4.d4 c5 5.d5 d6 6.e4 0-0 7.Be2 e6 8.0-0 exd5 9.cxd5 Bg4 10.h3 Bxf3 11.Bxf3 Nbd7** last book move **12.Be2 a6**



13.Rb1 b5 14.a3 Re8 15.Bf3 b4 16.axb4 cxb4 17.Ne2 Nxe4 18.Bf4  
 Ndc5 19.Ng3 Nxg3 20.Bxg3 a5 21.Bf4 Qb6 22.Be3 Rec8 23.Bd4  
 Bxd4 24.Qxd4 Nd7 25.Qf4 a4 26.Bg4 f5 27.Be2 Qc5 28.Rfc1 Qb6  
 29.g4 Rxc1+ 30.Rxc1 Ne5 31.gxf5 Rf8 32.f6 a3 33.Qh6 Qb7  
 Diagram



34.b3? losing move [34.bxa3 bxa3 35.f4 Nf3+ and no good moves to  
 save knight 36.Bxf3 a2 37.Qg7+ Qxg7 38.fxg7 Rb8 39.Be4 Rb4  
 40.Bd3 Rb3 41.Be4 Rb4=] 34...Rxf6 35.Qg5 Rf8 Diagram

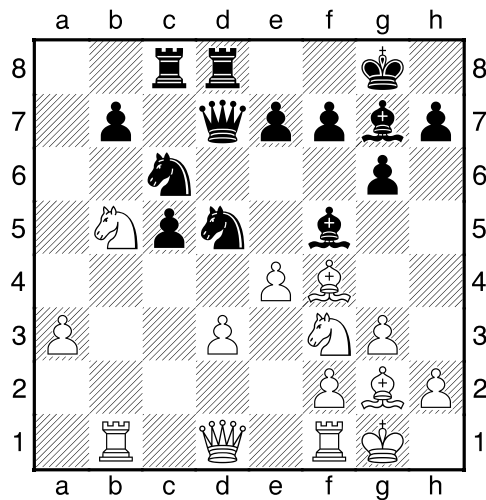


36.f4? white is losing but this makes matters worse [36.Qd2  
 36...Qa7+ 37.Kh1 Qe3 threatening bishop on e2 and rook on c1 0-1

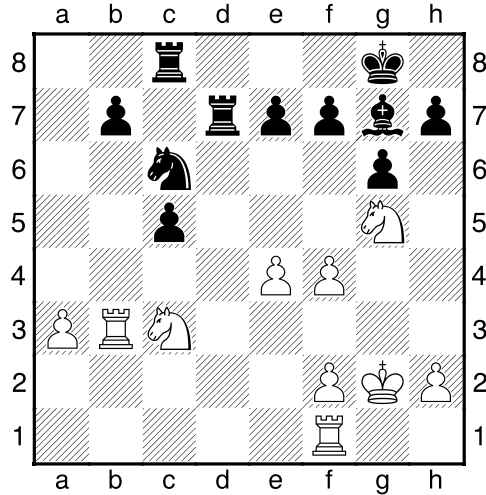
**(4) Merrell,Randy (1535) – Zhou,Celina (1404) [A38]**

2018 Kansas Open (4), 15.07.2018

A38: Symmetrical English vs ...g6: 4 Bg2 Bg7 5 Nf3 Nf6 1.c4 c5  
2.Nc3 Nf6 3.Nf3 g6 4.g3 Bg7 5.Bg2 d6 6.0-0 Nc6 7.Rb1 0-0 8.a3  
last book move 8...Bf5 9.d3 Qb6 10.Bd2 Rfd8 11.b4 Qc7 12.Qb3  
Rab8 13.Qa4 a6 14.b5 axb5 15.Nxb5 Qd7 16.Qd1 d5 17.Bf4 Rbc8  
18.cxd5 Nxd5 19.e4? Diagram



losing move. white gets double pawns plus loses d pawn [19.Bd2  
better. Black with only slight advantage  $\mp(-0.96)$ ] 19...Nxf4 20.gxf4  
Bh3 21.Ng5 Bxg2 22.Kxg2 Qxd3 23.Qb3 Qxb3 24.Rxb3 Rd7  
25.Nc3? Diagram

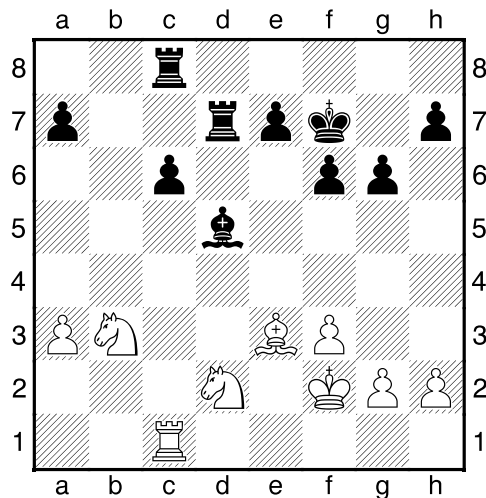


loses piece [25.Rc1 better though black still with advantage -+(-2.14)] **25...c4!** rook can no longer defend knight **0-1**

### (5) Hodges, Rick (1746) – Merrell, Randy (1535) [B27]

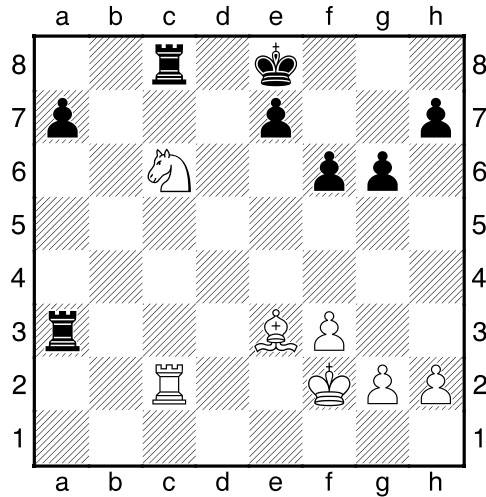
2018 Kansas Open (1), 14.07.2018

B27: Sicilian: 2 Nf3, unusual Black 2nd moves **1.e4 c5 2.Nf3 g6 3.d4 cxd4 4.Qxd4 Nf6 5.Bb5** last book move **5...Bg7 6.0-0 0-0 7.c3 Nc6 8.Qd3 d5 9.exd5 Qxd5 10.Qxd5 Nxd5 11.Bxc6 bxc6 12.Re1 Re8 13.Na3 Nxc3 14.bxc3 Bxc3 15.Be3 Bxa1 16.Rxa1 Be6** Fritz says position is equal. Black has given two pieces for rook and two pawns **17.Nd2 Red8 18.Nac4 Bd5= 19.a3 f6 20.Rc1 Rd7 21.f3 Rad8 22.Kf2= Kf7 23.Na5 Rc8 24.Nab3?! Diagram**





loses pawn [24.Ne4= better] **24...Bxb3! 25.Nxb3 Rd3 26.Na5 Rxa3 27.Nxc6 Ke8 28.Rc2?** Diagram

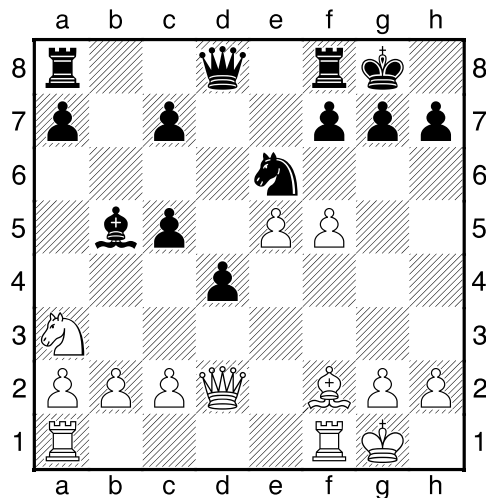


loses piece, losing move [28.Rc5 necessary] **28...Ra6!** if 29.Nd4 or 29.Nb4, then 29.....Rxc2+ followed by 30.Nxc2 Ra2 picking up piece that is pinned and cannot be defended **0-1**

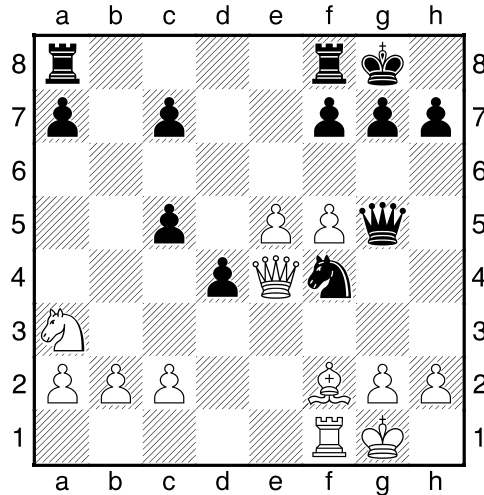
**(6) Otten,Nathan (1602) – Paolercio,Joseph (1603) [C56]**

2018 Kansas Open (3), 14.07.2018

C56: Two Knights: 4 d4 exd4 5 0-0 Nxe4 1.e4 e5 2.Nf3 Nc6 3.d4 exd4 4.Bc4 Nf6 5.e5 d5 6.Bb5 Ne4 7.Nxd4 Bd7 8.Bxc6 bxc6 9.0-0 Bc5 10.f3 Ng5 11.f4 Ne6 12.Be3 0-0 last book move 13.Qd2 Bxd4 14.Bxd4 c5 15.Bf2 d4 16.f5 Bb5 17.Na3? Diagram



No particular reason to just give up the exchange here [17.fxe6 why not? 17...Bxf1 18.Kxf1=; 17.Re1 best, the black knight does not have any good squares 17...Ng5 (17...Qg5 18.fxe6) 18.h4! no place for knight to go] **17...Bxf1 18.Rxf1 Qg5 19.Qd3** [19.Qxg5 best 19...Nxb3  $\mp(-0.85)$ ] **19...Nf4 20.Qe4?** Diagram

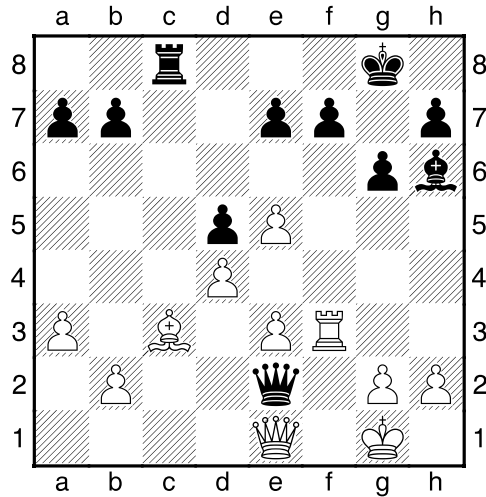


This loses immediately [20.Qf3 best 20...Qxf5 21.Bg3 g5] **20...Nh3+!** **21.Kh1 Nxf2+** on score sheet handed in there is written on the side: Capablanca–Fanoroff. This is a famous game in 1918 that ended a similar way. The knight cannot be taken as it is mate in two. But, if not taken there follows Nxe4 winning the queen. (22.Rxf2 Qc1+ 23.Qe1 Qe1+ 24.Rf1 Qxf1 mate) or (22.Kg1 Nxe4) **0-1**

### (7) Patrick, Earney (1500) – Parker, Brycen (1725) [A03]

2018 Kansas Open (1), 14.07.2018

A03: Bird's Opening with 1...d5 1.f4 d5 2.Nf3 Nf6 3.e3 g6 4.d4 Bg7 5.Bd3 0-0 6.0-0 c5 7.c3 Qb6 8.Nbd2 Nc6 9.Qe1 last book move 9...Re8 10.Ne5 Nd7 11.Qg3 Ndx5 12.fxe5 cxd4 13.cxd4 Nb4 14.Qf2 Rf8 15.Bb1 Bd7 16.a3 Qa6 17.Nb3 Nd3 18.Bxd3 Qxd3 19.Nc5 Qb5 20.Nxd7 Qxd7 21.Qh4 Rac8 22.Bd2 Rc2 23.Bc3 Qb5 24.Qe1 Re2 25.Qg3 Bh6 26.Rf3 Qd3 27.Re1 Rc8 28.Rxe2 Qxe2 29.Qe1? Diagram

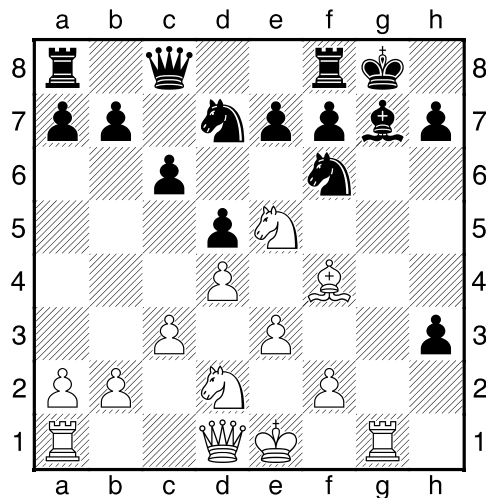


probably losing move. leads to loss of pawn [29.h3=] **29...Qxe1+ 30.Bxe1 Rc1 31.Kf1 Rb1 32.b4 Ra1 33.Rh3 Bg5 34.Ke2 Rxa3 35.Rf3 e6 36.h4 Be7 37.g3 Rb3 38.e4 Rb2+ 39.Kd3 dxe4+ 40.Kxe4 Bxb4 41.Bxb4 Rxb4 42.Rc3 b5 43.g4 a5 44.h5 Rc4 45.Kd3 Rxc3+ 46.Kxc3 gxh5 47.gxh5 0-1**

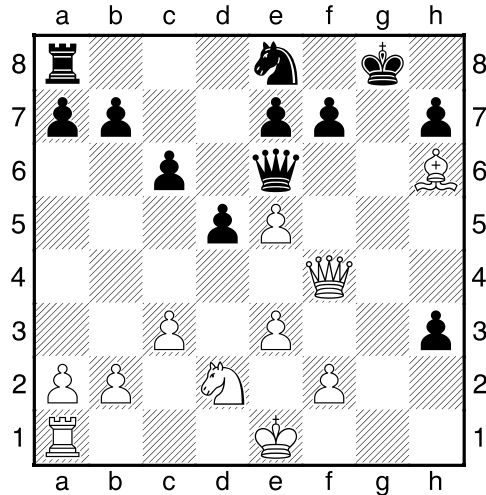
**(8) Parker, Brycen (1725) – Levine, Gary (1522) [D02]**

2018 Kansas Open (4), 15.07.2018

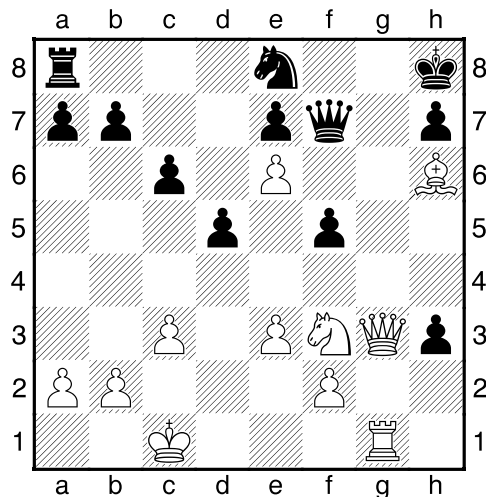
D02: 1 d4 d5 2 Nf3 sidelines, including 2...Nf6 3 g3 and 2...Nf6 3 Bf4  
**1.Nf3 d5 2.d4 c6 3.c3 Nf6 last book move 4.h3 g6 5.Bf4 Bg7 6.e3 0-0 7.Bd3 Bf5 8.Bxf5 gxf5 9.g4 Qc8 10.Rg1 fxg4 11.Ne5 gxh3 12.Nd2 Nbd7? Diagram**



blocks queen from guarding g4 square [12...Kh8 better, white with slight advantage] **13.Bh6 Nxe5** [13...Ne8 14.Rxg7+ Nxg7 15.Qg4] **14.Rxg7+ Kh8 15.dxe5 Ne8** [15...h2 better though black still losing 16.Ke2 Ne4 17.Rg2 Rg8 18.Rxh2 Qg4+ 19.Nf3 +-(3.30)] **16.Rg3 Rg8 17.Qf3 Qe6 18.Rxg8+ Kxg8 19.Qf4** Diagram



**19...Qg6 20.0-0-0 Kh8 21.Nf3 f5?** [21...Nc7 better though still losing] **22.Rg1 Qh5 23.Qg3 Qf7 24.e6!** Diagram

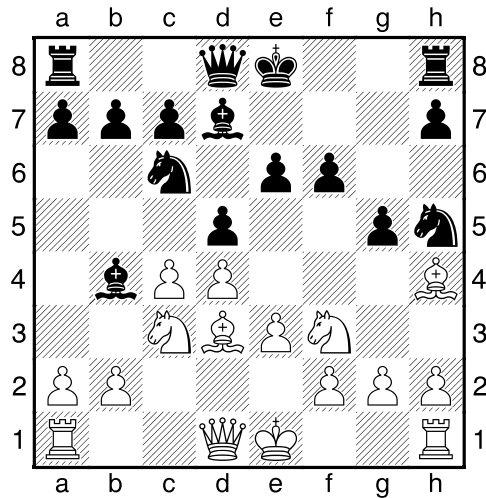


**mate in 10 1-0**

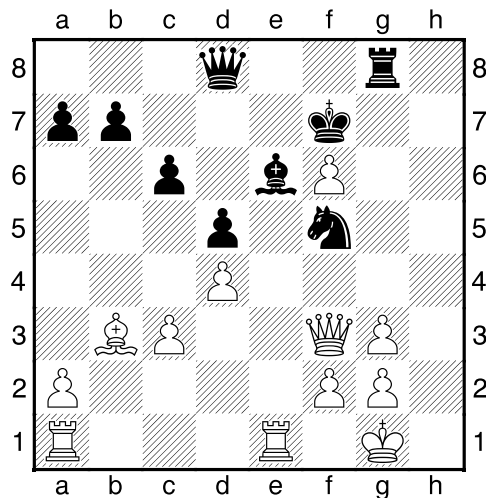
### (9) Rebholz,John (1743) – McDowell,John (1543) [D38]

2018 Kansas Open (2), 14.07.2018

D38: Queen's Gambit Declined: Ragozin Defence (4 Nf3 Bb4) 1.Nf3 d5 2.d4 Nc6 3.c4 e6 4.Nc3 Bb4 last book move 5.Bf4 Nf6 6.e3 Bd7 7.Bd3 Nh5 8.Bg5 f6 9.Bh4 g5? Diagram



It is downhill for black after this move. It weakens king position and ends up losing the exchange 10.Nxg5! Ng7 11.Nxh7 Rxh7 12.Bxh7 Kf7 13.Qg4 Ne7 14.Bc2 Nef5 15.Bg3 Qe7 16.0-0 Rg8 17.cxd5 Bxc3 18.bxc3 exd5 19.Qf3 c6 20.Rfe1 Qa3 21.Bb3 Nxg3 22.hxg3 Qd6 23.e4 Be6 24.e5 Qd8 25.exf6 Nf5 Diagram

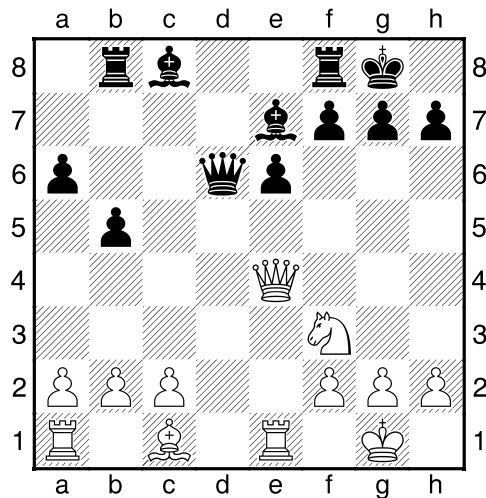


[25...Qxf6 better but still losing 26.Re5 Qxf3 27.gxf3 Bc8 28.g4 Rh8 29.Rae1 +-(-6.10)] **26.Bc2 Nd6** there follows 27.Qh5+ winning **1-0**

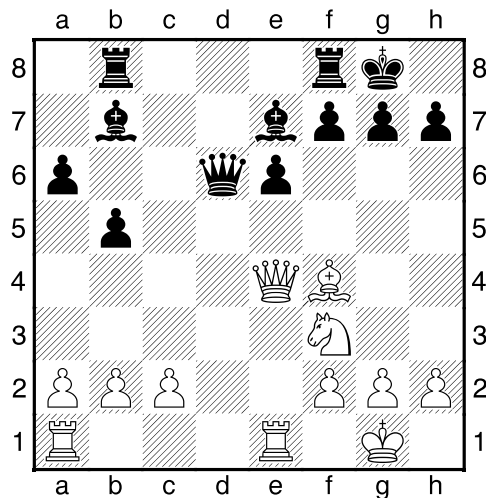
**(10) Armenta,CJ (1428) – Patrick,Earney (1500) [B45]**

2018 Kansas Open (4), 15.07.2018

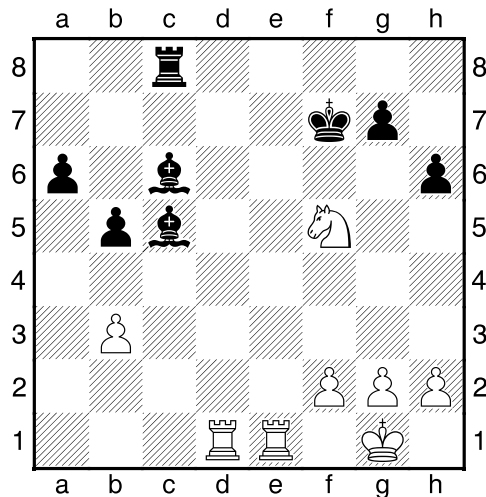
B45: Sicilian Four Knights 1.e4 c5 2.Bc4 e6 3.Nc3 Nc6 4.Nf3 Nf6 5.d4 cxd4 6.Nxd4 last book move 6...Be7 7.0-0 0-0 8.Re1 Ne5 9.Bb3 a6 10.Nf3 Nc6 11.e5 Ne8 12.Ne4 d5 13.exd6 Nxd6 14.Qe2 Na5 15.Nxd6 Qxd6 16.Bc4 Nxc4 17.Qxc4= b5 18.Qe4 Rb8? Diag.



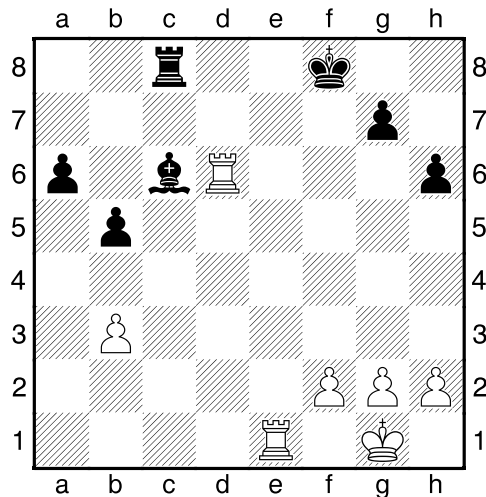
[18...Qb8=; 18...Qc7 19.Qxa8? (19.Bf4 Qb7=) 19...Bb7 20.Bf4 Qc6 21.Qxf8+ Kxf8 slight advantage for black  $\mp$ (-1.17)] **19.Bf4 Bb7?** Diag.



[19...Qb6 20.Bxb8 Qxb8 exchange down] **20.Qe3?** [20.Bxd6! better, ending up a whole piece up 20...Bxe4 21.Bxe7 Rfe8 22.Rxe4 Rxe7 +/- (5.04)] **20...Qc6 21.Bxb8 Rxb8 22.Qf4 Bd6 23.Qg4= f5?** weakens e6 **24.Qh3 Rc8? 25.Ng5** [25.Rad1 better] **25...h6 26.Nxe6 Qxc2 27.Nd4 Qxb2 28.Nxf5 Bc5 29.Qb3+ Qxb3 30.axb3 Kf7 31.Rad1 Bc6?** Diagram



[31...Rc7 better] **32.Nd6+!** forces exchange of one of black's bishops– black may have still been in the game with the two bishops on the board **32...Bxd6 33.Rxd6 Kf8?** Diagram



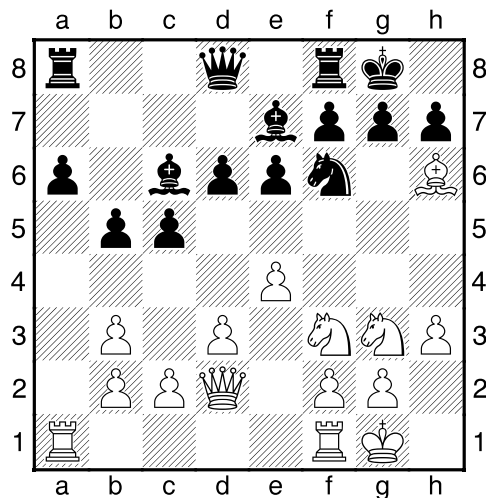
loses right away losing a piece to back row check **34.Rc1 Bb7**  
**35.Rxc8+ Bxc8 36.Rd8+** winning piece **1-0**

**(11) Deboard,Allen (1518) – Verhage,George (1614) [B50]**

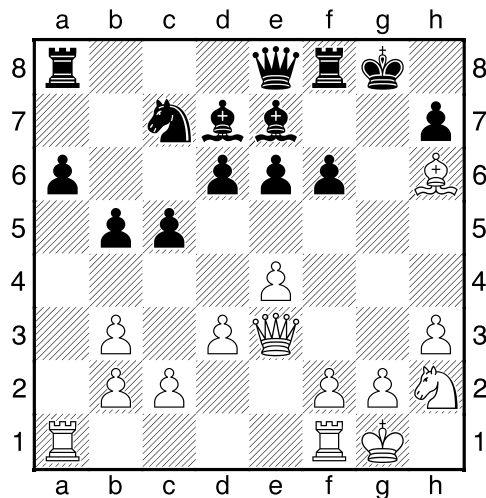
2018 Kansas Open (5), 15.07.2018

B50: Sicilian: 2...d6, Miscellaneous **1.e4 d6 2.Bc4 c5 3.Nf3 e6 4.d3**  
**Nf6 5.Nc3** last book move **5...Be7 6.0-0 0-0 7.Bg5 Nc6 8.Qd2 Na5**  
**9.Bb3 Nxb3 10.axb3 Bd7 11.Ne2 a6 12.Ng3 Bc6 13.h3 b5 14.Bh6?**

Diagram

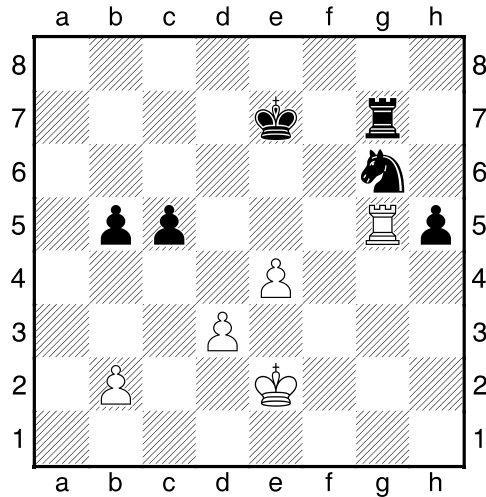


**14...Ne8=** [14...gxh6! 15.Qxh6 Re8 white does not have enough compensation for sacrificed piece  $-+(-2.56)$ ] **15.Bg5 f6 16.Be3 Bd7**  
**17.Nh5 Nc7 18.Nh2 Qe8 19.Nxg7 Kxg7 20.Bh6+ Kg8 21.Qe3?** Dia.





losing move [21.Bxf8 ♣(-0.85) 21...Qxf8] 21...Rf7 22.Qg3+ Kh8 23.f4 Qg8 24.Rf3 Qxg3 25.Rxg3 Rg8 26.Rxg8+ Kxg8 27.Rf1 Bf8 28.Bxf8 Kxf8 29.Rf3 Rg7 30.Ng4 Ke7 31.c4 Bc6 32.f5 exf5 33.Rxf5 Bd7 34.Rf3 Bxg4 35.hxg4 Rxg4 36.Rh3 Rg7 37.Kf2 Ne6 38.g3 Nd4 39.cxb5 axb5 40.b4 Nc6 41.bxc5 dxc5 42.g4 Ne5 43.g5 fxg5 44.Ke2 Ng6 45.Rg3 h5 46.Rxg5? Diagram



There follows 46. Nf4+ winning white rook **0-1**

**THE END**