

2016 KANSAS OPEN GAMES

I (Laurence) compiled a list of games from the 2016 Kansas Open. I looked at maybe 200 games and analyzed 100. Many games could not be followed for whatever reason. I came up with these 28 and I tried to use games from all three sections. It took me over a month to compile all these games, actually more than a month. As this is a Kansas website it is not surprising that most games have at least one Kansas player involved one way or another. Analysis and printout of games are from Fritz 12.

OPEN SECTION (pages 2 – 16)

1. Samuel Fowler ½ -Jason Wawrzaszek ½
2. Jason Wawrzaszek 1- Eric Simmons 0
3. David Sayler 0 – Joey Kelly 1
4. Sho Glashausser 1 – Shakti Shimpi 0
5. Joey Kelly 0 – Michael Brooks 1
6. Tony Dutiel 0 – Jason Wawrzaszek 1
7. Michael Brooks 1 – Zach Schuh 0
8. Daniel Herman 0 – Jack Easton 1
9. Jason Wawrzaszek 0 – Michael Brooks 1
10. Jack Easton ½ - Michael Brooks ½
11. Alexander Wolf ½ - Michael Mills ½
12. Mohammadreza Hajairbabi 1 – Dylan Mize 0
13. Ben Gradsky 1 – Alexander Wolf 0
14. Kris Kumar ½ - Kevin Schwartz ½

RESERVE SECTION (pages 16 – 28)

15. John McDowell 1 – Chris Talbot 0
16. Eddison Chen 0 – Laurence Coker 1
17. Ryan Duan 1 – Malachi Fowler 0
18. Randy Merrell 1 – Edward Nathan Perry 0
19. Josh Stimpfle 1 – Ryan Amburgy 0
20. Cael Province 1 – Russell Stinson 0
21. Joseph Sewadda 1 – Josh Stimpfle 0
22. Krishna B-Nair 0 – Cael Province 1

AMATEUR SECTION (pages 28 -35)

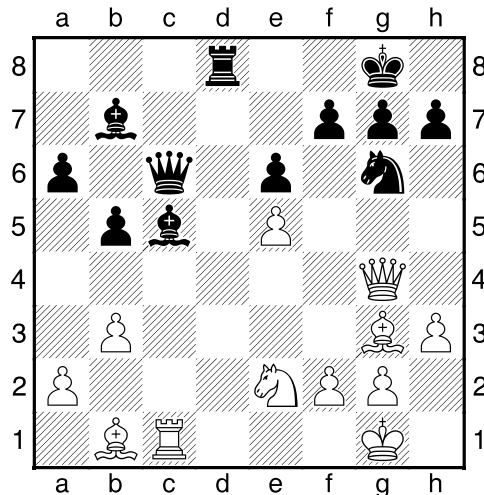
23. Thomas Claman 0 – Manohar Kyathsandra 1
24. Chad Kern 1 – John Ely 0
25. Manohar Kyathsandra 0 – Chad Kern 1
26. Liam McKinney 1 – Austin Tran 0
27. Noah Baden 1 – Skyler Vince 0
28. Tyler Patton 1 – Chris Amburgy 0

OPEN SECTION

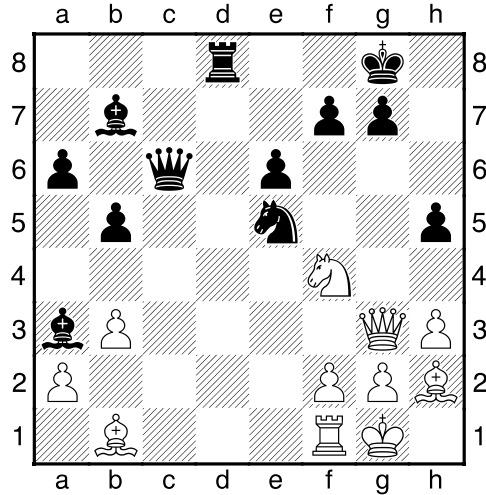
(1) Samuel Fowler (2164) – Jason Wawrzaszek (2040) [D48]

2016 Kansas Open (Rd 5), 17.07.2016

D48: Semi-Slav: Meran System: 7...b5 8 Bd3 a6 1.d4 d5 2.Nf3 Nf6 3.c4 c6 4.Nc3 e6 5.e3 Nbd7 6.Be2 dxc4 7.Bxc4 b5 8.Bd3 Bb7 9.0-0 a6 10.b3 c5 11.Bb2 Qb6 12.Qe2 Rc8 13.Rfd1 Be7 14.Rac1 0-0 15.Bb1 Rfd8 last book move 16.h3 Bc6 17.e4 cxd4 18.Nxd4 Bb7 19.e5 Nd5 20.Nxd5 Bxd5 21.Rd3 Rxc1+ 22.Bxc1 Qc7 23.Bf4 Nf8 24.Qg4 Ng6 25.Rd1 Bc5 26.Ne2 Qb6 27.Bg3 Bb7 28.Rc1 Qc6 Diagram



29.Bh2? [29.Be4 Better 29...Bxf2+ 30.Bxf2 Qxe4 31.Qxe4 Bxe4 32.Bb6 Ra8 \mp -1.05] **29...Ba3?** [29...h5! The white queen is overloaded 30.Qg3 Nxe5 31.Kh1 removing Bxf2+ (31.Nf4 Bxf2+ 32.Kxf2 Qxc1 $-+(-8.91)$; 31.Nc3 h4 32.Qg5 Be7 33.Be4 Bxg5 34.Bxc6 Nxc6 $-+(-7.44)$) 31...h4 32.Qg5? f6 $-+(-9.53)$] **30.Rf1 h5 31.Qg3 Nxe5 32.Nf4** Diagram

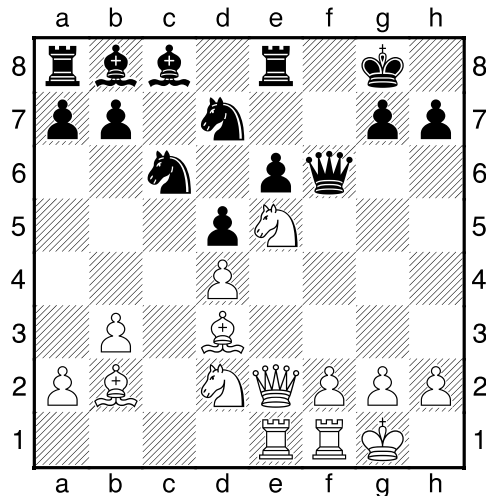


32...Bd6? [32...h4! 33.Qg5 (33.Qxh4? Qxg2+ 34.Nxg2 Nf3+ 35.Kh1 Nxh4 -+(-11.25)) 33...f6 34.Qh5 f5 -+(-2.13)] **33.Nxh5 Ng6 34.Qg4=**
 1/2-1/2

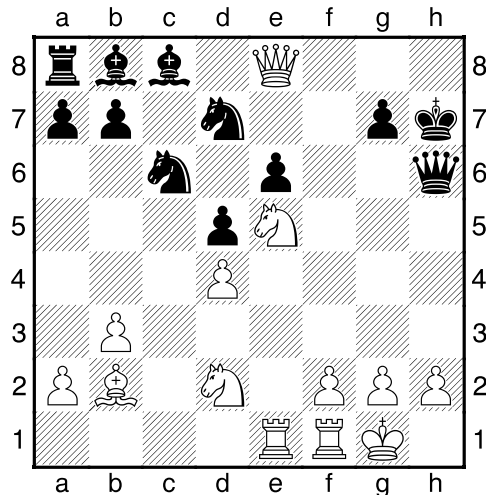
(2) Jason Wawrzaszek (2040) – Eric Simmons (1686)
[C06]

2016 Kansas Open (Rd 4), 17.07.2016

C06: French Tarrasch: 3...Nf6 4 e5 Nfd7 5 Bd3 main lines 1.e4 e6 2.d4 d5 3.Nd2 Nf6 4.e5 Nfd7 5.Bd3 c5 6.c3 Nc6 7.Ngf3 cxd4 8.cxd4 f6 9.exf6 Nxf6 10.0-0 Bd6 11.b3 0-0 12.Bb2 last book move 12...Nd7 13.Qe2 Qf6 14.Rae1 Re8 15.Ne5 Bb8? Diagram



[15...Qh6 Much better 16.Ng4 Qh5 17.f4 ±(1.08)] **16.Bxh7+! Kxh7**
17.Qh5+ Qh6 18.Qxe8 Diagram

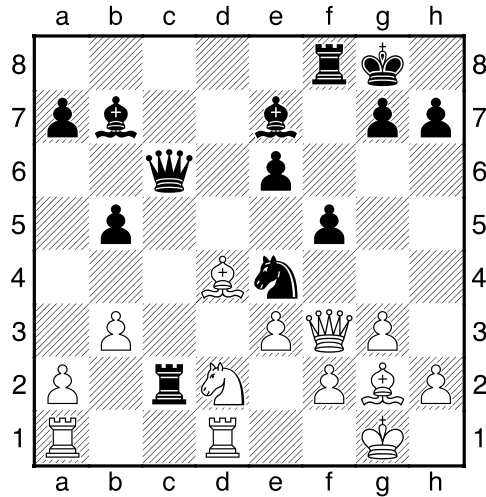


18...Ndx5? [18...Bd6 Better though still losing] **19.dxe5 d4 20.Nf3**
 [20.Qxc8?? Not this 20...Bxe5! Threatens queen plus mate 21.Rxe5
 Rxc8 -+(-2.23) It is black with advantage] **20...Bc7 21.Re4** [21.Bc1!
 Even better 21...Qg6 (21...g5 22.Nxg5+ Kg7 23.Nf7 Qh4 24.Bh6+
 mate in 12) 22.Ng5+ Qxg5 23.Bxg5 +-(20.59)] **21...Bd8 22.Rg4**
 white can follow with 23. Rg3 then Rh3 or 23. Rg3 and then Bc1 **1-0**

(3) David Saylor (1716) – Joey Kelly (2194) [E01]

2016 Kansas Open (Rd 2), 16.07.2016

E01: Catalan: Early deviations **1.c4 Nf6 2.g3 e6 3.Bg2 d5 4.d4 c6**
5.Qc2 Be7 6.Nf3 dxc4 7.Qxc4 b5 8.Qc2 Bb7 9.0-0 last book move
9...Nbd7 10.Rd1 Qb6 11.b3 Rc8 12.e3 c5 13.dxc5 Nxc5 14.Qe2
Nce4 15.Bb2 0-0 16.Nfd2 Rc2 17.Bd4 Qc6 18.Nxe4 Nxe4 19.Nd2 f5
20.Qf3? Diagram

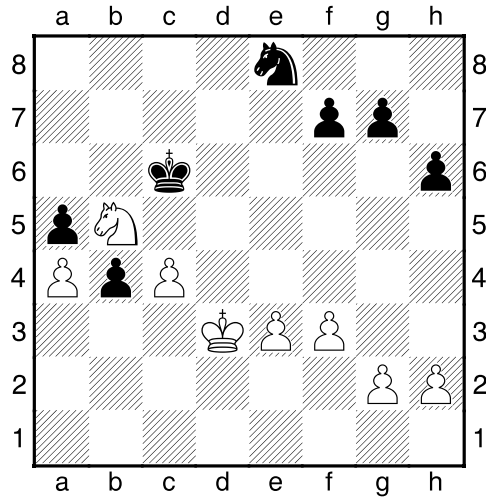


[20.Bxe4 Much better 20...fxe4 $\bar{\bar{r}}(-0.67)$; 20.Qf1 also better 20...Bb4 21.Nxe4 fxe4 22.Rac1 $\bar{\bar{r}}(-0.53)$] **20...Qc7 21.Bxa7?** drops a piece via discovered attack [21.Nxe4 Much better 21...Bxe4 22.Qf4 Bd6 23.Bxe4 Bxf4 24.Bxc2 Be5 25.Bxe5 Qxe5 $-+(-1.82)$] **21...Bd5! 0-1**

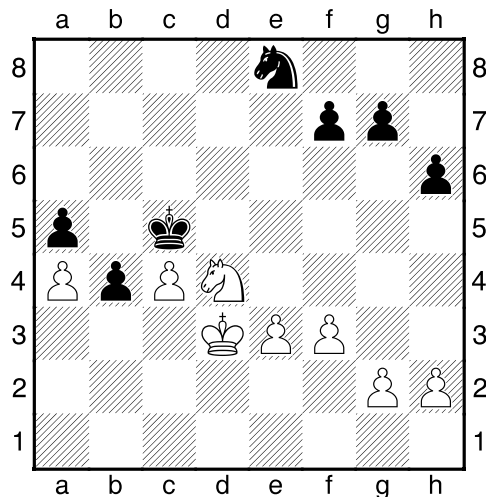
(4) Sho Glashausser (1843) – Shakti Shimpi (1881) [E11]

2016 Kansas Open (Rd 1), 16.07.2016

E11: Bogo-Indian 1.d4 Nf6 2.c4 e6 3.Nf3 Bb4+ 4.Bd2 Bxd2+ 5.Qxd2 0-0 6.Nc3 d5 7.e3 last book move 7...b6 8.Bd3 dxc4 9.Bxc4 Bb7 10.Be2 Nbd7 11.0-0 c5 12.Rfd1 Rc8 13.Rac1 Qe7 14.Ne1 Rfd8 15.Bf3 Bxf3 16.Nxf3 h6 17.Qe2 e5 18.dxe5 Nxe5 19.Nxe5 Qxe5 20.Rxd8+ Rxd8 21.Rd1 Qe7 22.Rxd8+ Qxd8 23.Qd1 Qxd1+ 24.Nxd1 Kf8 25.Nc3 Ke7 26.Kf1 Kd7 27.Ke2 Kc6 28.f3 b5 29.Kd3 a5 30.b3= Ne8 31.a4 c4+ Not a bad idea. Black gets a protected passed pawn. The follow up is what it is bad. **32.bxc4 b4! 33.Nb5**
Diagram



33...Kc5? [33...Nc7 best 34.Nxc7 (34.Nd4+ Kb6 35.h4 Na6 36.Nb3 Nc5+ 37.Nxc5 Kxc5 38.e4 Kc6 39.h5 Kd6 Once again, white can't leave protected passed pawn. $\pm(0.61)$) 34...Kxc7 35.c5 h5 36.g3 Kc6 37.Kc4 f6 38.h3 Kd7 39.e4 Kc6 40.f4 Kd7 41.e5 fxe5 42.fxe5 g5 43.Kd4 Kd8 44.h4 g4 45.Kc4 Kd7 White can't leave protected passed pawn. $\pm(1.09)$] **34.Nd4** Diagram



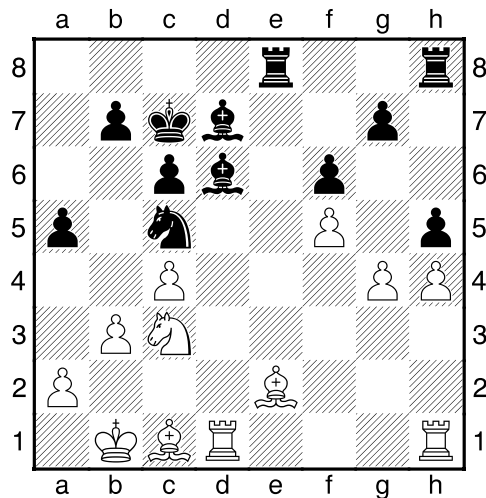
34...Nd6? [34...Kb6 Better, though white with advantage 35.Nb3 Ka6 36.c5 Nc7 37.Kd4 g6 38.e4 $+-(-2.72)$] **35.Nb3+ Kc6** [35...Kb6? 36.c5+ Wins knight. The reason 34...Nd6 was bad. Either the a5 pawn drops or there is pawn fork of king and knight] **36.Nxa5+ Kc5 37.Nb3+ Kc6**

38.c5 Ne8 39.Kc4 Nf6 40.e4 Nd7 41.Nd4+ Kc7 42.Kxb4 g6 43.a5 Nb8 44.Kb5 Kb7 45.c6+ Kc7 46.a6 1-0

(5) Joey Kelly (2194) – Michael Brooks (2422) [A41]

2016 Kansas Open (Rd 5), 17.07.2016

A41: 1 d4 d6: Tartakower System and Modern Defence 1.d4 d6 2.c4 e5 3.dxe5 dxe5 4.Qxd8+ Kxd8 5.Nf3 f6 6.Nc3 Be6 7.b3 last book move 7...Na6 8.Bb2 c6 9.e3 Nh6 10.Be2 Nc5 11.0-0-0+ Kc7 12.Nd2 Bf5 13.Nf1 a5 14.Ng3 Bg6 15.h4 Nf5 16.Nxf5 Bxf5 17.g4 Be6= 18.f4?! very slight advantage for black after this move $\bar{\mp}$ (-0.54) 18...exf4 19.exf4 h5 20.f5 Bd7 21.Kb1 [21.Kc2 slightly better according to fritz 12] 21...Re8 22.Bc1 Bd6 Diagram



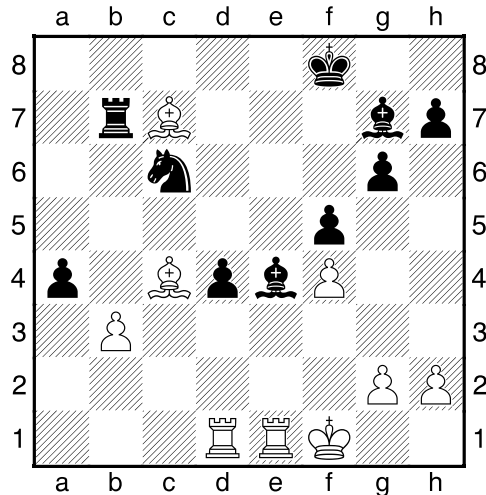
23.Kb2? Losing move. moving king into pin after Be5 23...Be5! 24.Bf3 hxg4 There follows 25.Bxg4 Ne4 26.Bd2 b5 27.cxb5 cxb5 28. Bf4 Nf2 20.Bf3 Nxd1 $\bar{\mp}$ (-3.87) 0-1

(6) Tony Dutiel (1799) – Jason Wawrzaszek (2040) [B22]

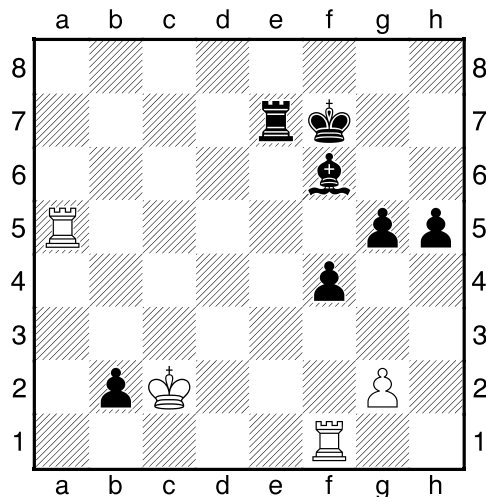
2016 Kansas Open (Rd 3), 16.07.2016

B22: Sicilian: 2 c3 1.e4 c5 2.c3 Jason plays this as white often. 2...Nf6 3.e5 Nd5 4.d4 cxd4 5.cxd4 d6 6.Bc4 e6 7.Nf3 Nc6 8.0-0 Be7 9.Bd2 0-0 10.Nc3 last book move 10...Nxc3 11.Bxc3 Rb8 12.Qe2 a6 13.Rac1 b5 14.Bd3 Bd7 15.Qe4 g6 16.exd6 Bxd6 17.d5 f5 18.Qe3 exd5 19.Qh6 Rf7 20.Ng5 Bf8 21.Nxf7 Bxh6 22.Nxd8 Rxd8 23.Rcd1 d4 24.Bd2 Bg7 25.Rfe1 Ne5 26.Ba5 Rc8 27.Bb6 Nc6 28.Be2 Re8 29.Kf1? [29.Bf3 better $\bar{\mp}$ (-2.44)] 29...Be6 $\bar{\mp}$ (0.85)

30.b3 Bd5 31.f4 Be4 32.a4 bxa4 33.Bxa6 Rb8 34.Bc4+ [34.Bc7] 34...Kf8? This allows checks by dark squared bishop [34...Kh8 Better with slight advantage for black. $\mp(-0.63)$] 35.Bc7? Gives away advantage 35...Rb7 Diagram



[35...Rxb3! 36.Bd6+ Ke8 37.Bxb3 axb3=] 36.Be5? Now black is winning. [36.Bd6+ Ke8 37.bxa4 $\pm(-2.11)$] 36...Nxe5 37.fxe5 axb3 38.Rxd4? [38.Bd3 better, though black still with advantage $\pm(-2.15)$] 38...Bxe5 39.Rd8+ [39.Rdxe4 better though still losing 39...fxe4 40.Bd5 Rb5 41.Bxe4 $\pm(-2.90)$] 39...Kg7 40.Bd5 Bxd5 41.Rxd5 Bxh2 42.Kf2 b2 43.Rb1 Bf4 44.Ke2 Kf6 45.Kd1 Be5 46.Rc5 f4 47.Kc2 h5 48.Rc6+ Kf7 49.Rc5 Bf6 50.Rf1 g5 51.Ra5 Re7 Diagram

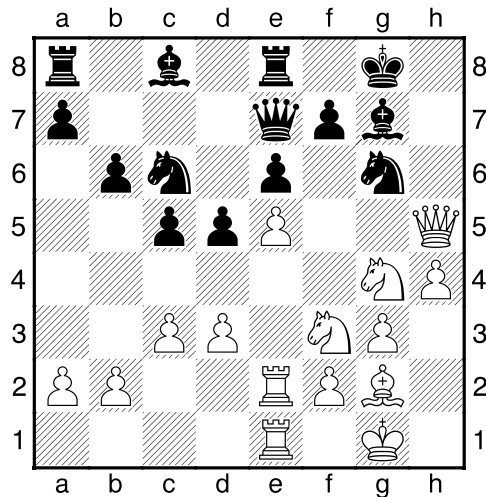


52.Rf2? Difficult to tell on score sheet whether this is Rf2 or Rf3, but they both lose to 52.... Rc7+ [52.Rd5 better but still losing -+(-4.56)]
52...Rc7+ 0-1

(7) Michael Brooks (2423) – Zachary Schuh (1832) [C00]

2016 Kansas Open (Rd 1), 16.07.2016

C00: French: Unusual White 2nd moves **1.e4 e6 2.d3 d5 3.Nd2 Nf6 4.g3** last book move **4...c6 5.Ngf3 Bb4 6.c3 Be7 7.Bg2 0-0 8.0-0 Na6 9.e5 Nd7 10.Re1 c5 11.Nf1 Nab8? 12.h4 h6 13.Bf4 Nc6 14.N1h2 Re8 15.Qd2 Nf8 16.Re2 Ng6 17.Bxh6 gxh6 18.Qxh6 Bf8 19.Qh5 Bg7 20.Ng4 Qe7 21.Rae1 b6?** Diagram

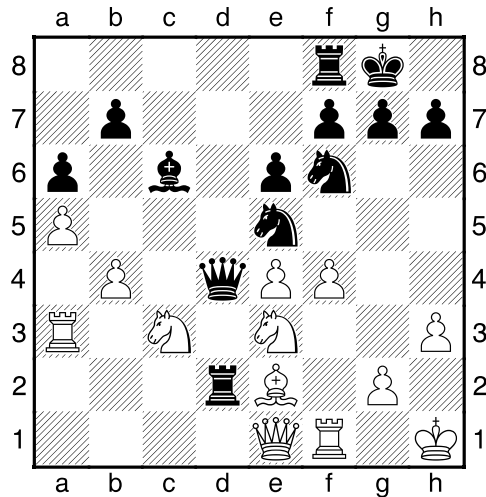


Probably losing move. Leaves knight unprotected and exposes rook along h1-a8 diagonal. **22.Ng5! Ba6? 23.Bxd5! Rac8 24.Bxe6 fxe6 25.Qxg6 1-0**

(8) Daniel Herman (2091) – Jack Easton (2200) [D26]

2016 Kansas Open (Rd 3), 16.07.2016

D26: Queen's Gambit Accepted: 4 e3 e6 5 Bxc5 c5 sidelines **1.d4 d5 2.c4 dxc4 3.e3 Nf6 4.Bxc4 a6 5.a4 e6 6.Nf3 c5 7.Nc3 Be7 8.0-0 0-0** last book move **9.e4 cxd4 10.Nxd4 Nbd7 11.Be3 Ne5 12.Be2 Bc5 13.Nc2 Bxe3 14.Nxe3 Qb6= 15.Qb1 Bd7 16.a5 Qc5 17.Ra3 Bc6 18.b4 Qa7 19.Kh1?! [19.Qb2= indirect threat on knight on e5] 19...Rad8 20.h3 [20.Qb2 better] 20...Rd2 21.Qe1 [21.b5 better 21...Qc5 22.Rb3 axb5 23.Bxb5 Rfd8 slight advantage for black ♞(-0.63)] 21...Qd4 22.f4?** Diagram



drops two pawns. probably losing move [22.b5 better though with some advantage for black. 22...Bxb5 23.Bxb5 axb5 24.Rb3 Rd3 25.Nxb5 Qd7 26.Nc3 +(-1.60)] **22...Qxe3 23.fxe5 Nxe4 24.Nxe4** [24.Rf3 better, though black still gets advantage 24...Qd4 25.Nxe4 Bxe4 26.Rf1 Qxb4 27.Bf3 Qxa3 28.Qxd2 Bxf3 29.gxf3 +(-3.14)] **24...Qxe2 25.Qxe2 Rxe2 26.Nf2 Rxe5 27.Rd1 Rg5 0-1**

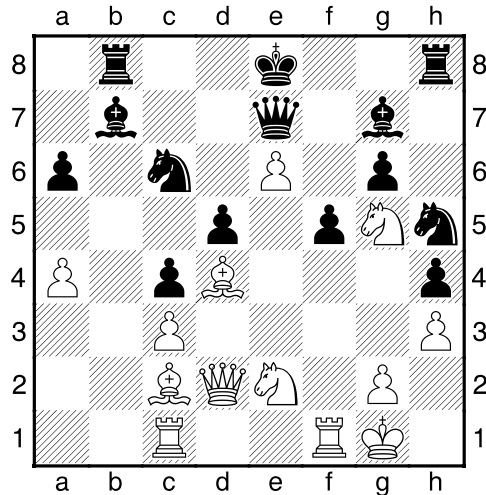
(9) Jason Wawrzaszek (2040) – Michael Brooks (2422)

[B06]

2016 Kansas Open (Rd 2), 16.07.2016

B06: Modern Defence **1.e4 g6 2.d4 d6 3.Nc3 Bg7 4.Nf3 Nd7 5.Be3 a6 6.Qd2 e6 7.Bd3 h6** last book move **8.h3 Ne7 9.Nh2 b5 10.a4 b4 11.Ne2 Rb8 12.0-0 Bb7 13.Ng3 c5 14.c3 Qc7 15.Rac1 bxc3 16.bxc3 h5 17.f4 c4 18.Bc2 h4 19.Ne2 f5 20.Nf3= Nf6 21.Ng5 Qd7 22.d5 exd5 23.e5 dxe5 24.fxe5 Nh5 25.Bd4 Nc6= 26.e6 Qe7**

Diagram

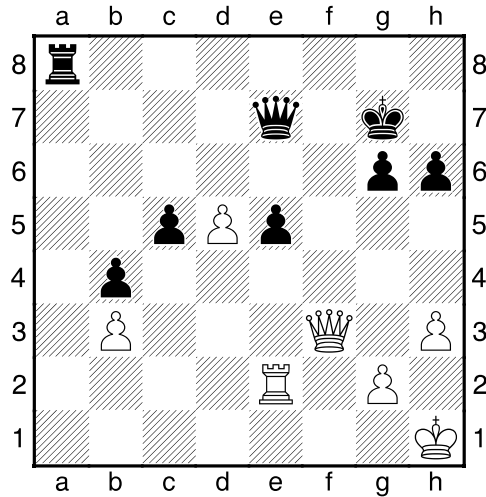


27.Rfe1? -+(-3.45) white is now losing [27.Bxg7 Nxg7 28.Nf7 Rh7 29.Nf4 Nxe6 30.Rce1 Kxf7 31.Rxe6 ±(1.18)] **27...Nxd4! 28.Nxd4 Bh6** a nasty pin **29.Ndf3 0-0 30.Rb1 Ba8 31.Rxb8 Rxb8 32.Qe3 Re8 33.g4 d4 34.cxd4** [34.Qxd4 Better but still losing] **34...Bxf3 35.Qxf3 Qxg5 36.d5 Ng3 37.d6?** [37.Qf2 Only slight better but still losing 37...Bf8 -+(-5.17)] **37...Qd2! 38.Qf2 Qxd6 39.gxf5 gxf5 40.Bxf5? Nxf5 0-1**

(10) Jack Easton (2200) – Michael Brooks (2423) [A65]

2016 Kansas Open (Rd 4), 17.07.2016

A65: Modern Benoni: 6 e4 1.d4 g6 2.c4 d6 3.Nc3 Bg7 4.e4 Nf6 5.f3 0-0 6.Nge2 c5 7.d5 e6 8.Bg5 h6 9.Be3 exd5 10.cxd5 Nbd7 11.Qd2 Ne5 12.Nc1 last book move 12...Kh7 13.Be2 Nfd7 14.0-0 Nb6 15.Bf2 Nec4 16.Bxc4 Nxc4 17.Qe2 b5 18.Nd3 Rb8 19.Rac1 b4 20.Nd1 Nb6 21.b3 a5 22.Ne3 Ba6 23.Qc2 Re8 24.Rfd1 Qd7 25.Nb2 Bb5 26.Nbc4 a4 27.Kh1 axb3 28.axb3 Nxc4 29.Nxc4 Bxc4 30.Qxc4 Ra8 31.Bg3 Ra5 32.Re1 Rd8 33.Rcd1 Bc3 34.Re2 Rda8 35.Rc2 Bd4 36.h3 Ra1 37.Rcc1 Rxc1 38.Rxc1 Qe7 39.Qd3 Kg7 40.f4 f6 41.Qf3 Rf8 42.Re1 Bc3 43.Re2 Ra8 44.e5 fxe5 45.fxe5 Bxe5 46.Bxe5+ dxe5 Diagram

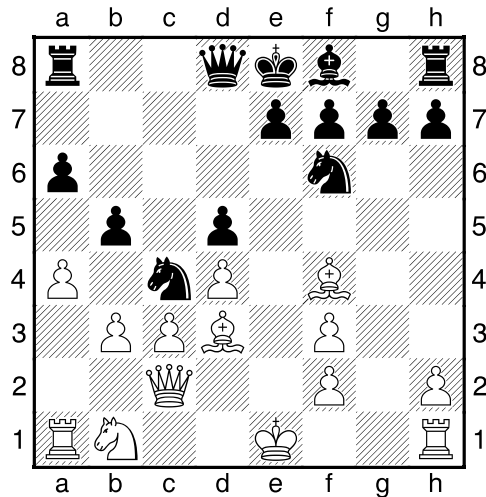


47.d6 e4 48.dxe7 exf3 49.gxf3 Kf7 50.Re5 Re8 51.Rxc5 Rxe7
52.Rb5 Re3 53.Rxb4 Rxf3 54.Kg2 Rc3 55.Rb6 g5 ½-½

(11) Alexander Wolf (1926) – Michael Mills (1726) [B13]

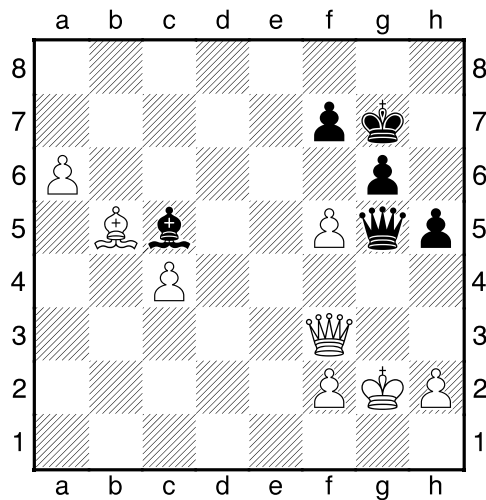
2016 Kansas Open (Rd1), 16.07.2016

B13: Caro-Kann: Exchange Variation 1.e4 c6 2.d4 d5 3.exd5 cxd5
4.Bd3 Nc6 5.c3 Nf6 6.Bf4 Bg4 7.Qb3 Na5 8.Qc2 last book move
8...a6 9.Nf3? [9.Nd2 -better in this opening to play Nd2 before
playing Ngf3] 9...Bxf3 10.gxf3 b5 11.a4 Nc4 12.b3 Diagram



12...Nd6? [12...Nh5! 13.Be3 (13.Bg3 Nxc3 14.hxc3 Nd6 ±(0.50))
13...Nd6 ±(0.83)] 13.Bxd6! wins pawn 13...Qxd6 14.axb5 e5?

[14...g6 still with advantage for white but better 15.Rxa6 Rxa6 16.bxa6 Bh6 +-(1.76)] **15.Rxa6 Rxa6 16.bxa6 Be7 17.Bb5+ Nd7 18.dxe5 Qxe5+ 19.Qe2** [19.Kd1 Better, threatening Re1 with tempo on queen 19...Kd8 20.Re1 Qd6 21.Qa2 Kc7 22.Qa5+ Nb6 23.Kc2 +-(3.91)] **19...Qd6 20.0-0 0-0 21.Nd2 Nb6 22.Qd3 Qf6 23.Kh1 Rc8 24.c4 Bd6 25.Rg1 Qf4 26.Rg2 dxc4 27.bxc4 g6 28.Qe3 h5 29.Qxb6 Qxd2 30.Qb7?** [30.Qe3 Qxe3 (30...Qa2 31.Rg5 Qb2 32.Rd5 +-(3.44)) 31.fxe3 Bc5 32.e4 +-(2.64)] **30...Kg7 31.Qe4 Rc7 32.Qe3 Qb2 33.f4 Re7 34.Qf3 Bc5 35.f5 Re1+** [35...Re2 Better] **36.Rg1 Rxc4 37.Kxc4 Qc1+ 38.Kg2 Qg5+** Diagram



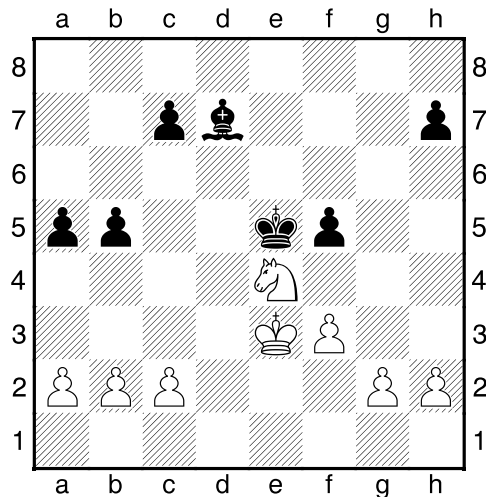
39.Kf1= [39.Kh3 slightly better though probably not a move a human would chose 39...Bxf2 40.fxc6 fxc6 41.Bc6 Qh4+ 42.Kg2 Bc5 ±(0.44)] **39...Qc1+ 40.Ke2 Qc2+ 41.Kf1 Qc1+ 42.Kg2 Qg5+ 43.Qg3 Qxf5 44.Bc6 Qf6 45.Bb7 h4 46.Qf3 Qd4 47.Bd5 f5 48.Be6=** Difficult to win this opposite colored bishop endgame despite the fact that there are still queens on the board 1/2-1/2

(12) Mohammadreza Hajairbabi (1831) – Dylan Mize (1634) [C64]

2016 Kansas Open (Rd 5), 17.07.2016

C64: Ruy Lopez: Classical Defence (3...Bc5) except 4 0-0 Nf6 **1.e4 e5 2.Nf3 Nc6 3.Bb5 Bc5 4.0-0 d6 5.d4 exd4 6.Nxd4** last book move **6...Bxd4 7.Qxd4 Qf6 8.e5 dxe5 9.Bxc6+ Qxc6 10.Qxe5+ Ne7 11.Re1 Be6 12.Nc3 0-0-0 13.Bg5 Rde8 14.Bxe7 Rxe7 15.Qxg7 Ree8 16.Ne4 Rhg8 17.Qc3 Bd5 18.Qxc6 Bxc6 19.Ng3 Rxe1+**

20.Rxe1 Rd8 21.Nf5 Rd2 22.Ne3 Kd7?! It may have been better to figure out a way to keep rooks on the board. If one can exchange the bishop for the knight, there is a better chance for a draw in a rook and pawn endgame down a pawn. Also, a rook and bishop work well together. 23.Rd1 Rxd1+ 24.Nxd1 a5 25.f3 Ke6 26.Kf2 b5 27.Ke3 Ke5 28.Nf2 Bd7 29.Ne4 f5? Diagram



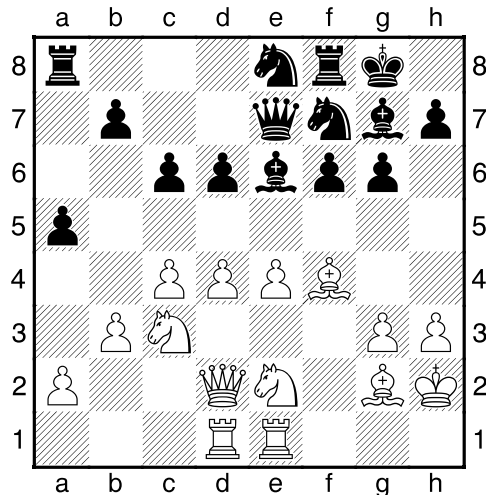
[29...Be6 Better, though white still gets some advantage. Better to keep bishop in the game. 30.b3 h5 31.Nc5 Bf5 32.Nd3+ Kd6 33.h4 f6 34.c3 a4 35.bxa4 bxa4 36.a3 +-(2.30)] **30.f4+!** Forces exchange of knight for bishop, thus going into a won king and pawn endgame. **30...Ke6** [30...Kd5 Not any better 31.Nf6+ Ke6 32.Nxd7 Kxd7] **31.Nc5+ Ke7 32.Nxd7 Kxd7 33.h3 Ke6?** [33...h5 looks better, but is still losing after 34.c4! It may have been better for black to have kept his queen side pawns back. 34.c4! bxc4 (34...c6 35.Kd4 Kd6 36.cxb5 cxb5 37.g3 b4 38.b3 white will penetrate one side or the other) 35.Kd4 c3 36.Kxc3 Kd6 37.Kc4 c6 38.a4 h4 39.Kd4 c5+ 40.Kc4 Kc6 41.b3 zugzwang] **34.g4 c5 35.g5 Kd5 36.h4 Ke6 37.h5 Ke7 38.a4! bxa4 39.Kd3 a3 1-0**

(13) Ben Gradsky (2159) – Alexander Wolf (1926) [A26]

2016 Kansas Open (Rd 3), 16.07.2016

A26: English Opening vs King's Indian with ...Nc6 and d3 **1.c4 g6 2.Nc3 Bg7 3.g3 Nf6 4.Bg2 0-0 5.e4 d6 6.Nge2 e5 7.0-0 Nc6 8.d3**

last book move 8...a5 9.h3 Ne8 10.f4 exf4 11.Bxf4 Be6 12.Qd2 Ne5
 13.Rad1 c6 14.b3 f6 15.d4 Nf7 16.Kh2 Qe7 17.Rfe1 Diagram

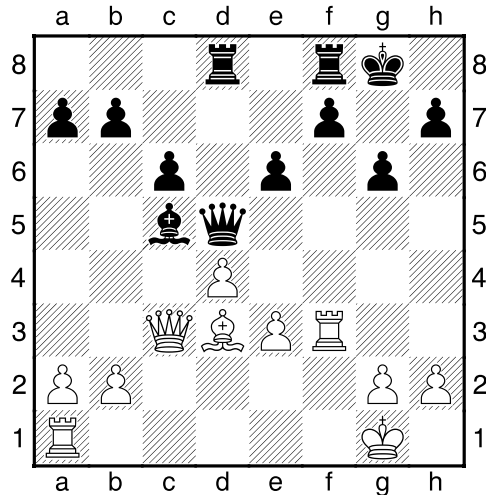


17...g5? [17...Bd7 better] 18.Be3 Rd8 19.d5 Bd7 20.dxc6 bxc6
 21.Bb6 Ra8 22.c5 Ne5 23.cxd6 Qf7 24.Nd4 [24.Rf1 Better 24...Qg6
 25.Nd5 Qh5 26.Ne7+ Kh8 27.Nf5 Bxf5 28.Rxf5 +-(2.88)] 24...Nxd6
 25.Bc5 only +-(1.92)[25.Nf3 Actually, this is a better move +-(4.12)
 25...Nxf3+ 26.Bxf3 f5 27.e5 g4 28.Qxd6 gxf3 29.Qxd7 Qxd7 30.Rxd7
 +-(5.33)] 1-0

(14) Krish Kumar (1739) – Kevin Schwartz (1854) [C10]

2016 Kansas Open (Rd 1), 16.07.2016

C10: French with 3 Nc3: Unusual Black 3rd moves and 3...dxe4 1.e4
 e6 2.d4 d5 3.Nc3 dxe4 4.Nxe4 Bd7 5.Nf3 Bc6 last book move 6.Nc3
 Nf6 7.Be2 Be7 8.Be3 Nbd7 9.Qd2 Bxf3 10.Bxf3 c6 11.0-0 0-0
 12.Ne4 Nxe4 13.Bxe4 Nf6 14.Bd3 Nd5 15.c4 Nxe3 16.fxe3 g6
 17.c5 Qd5 18.Rf3 Rad8 19.Qc3 Bxc5? Diagram



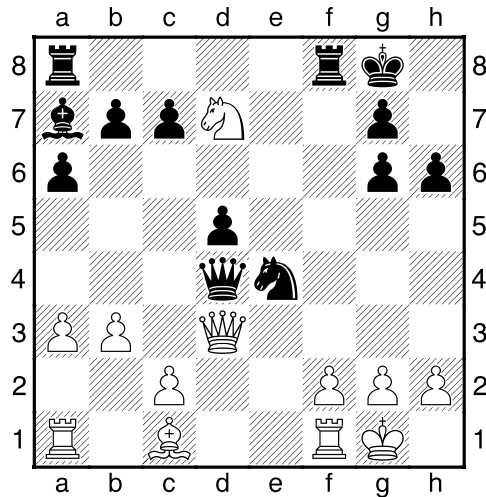
[19...e5 20.Re1 Bh4 21.Rc1 exd4 22.exd4 -+(-1.74)] **20.Bxg6?**
 [20.Bc4! Bxd4 Black gets three pawns for the piece, but white will have a slight advantage. (20...Qxd4 21.exd4 Bxd4+ 22.Qxd4 Rxd4 same result as 20... Bxd4) 21.exd4 Qxd4+ 22.Qxd4 Rxd4 ±(0.31)]
20...Bxd4 [20...hxg6 21.dxc5 Qd2 slight advantage for black ∓(-0.30)]
21.Bxh7+ Kxh7 22.Qxd4 Qxd4 23.exd4 Rxd4 The smoke has cleared and black is up a pawn in a rook and pawn endgame with some advantage ∓(-1.09) **24.Raf1 f5 25.Re1 Rd6 26.Rb3 Rf7 27.Rbe3 Re7 28.Re5 Kg6 29.Kf2 Kf6 30.R5e3 e5 31.h4 f4 32.Rf3 Rd2+ 33.Re2 Rxe2+ 34.Kxe2 Kf5 35.Rh3 Rg7 36.Kf2 e4 37.h5 e3+ [37...Kg4 winning 38.h6 Rh7 39.b4 e3+ 40.Ke2 b6 41.Rh1 a6 42.a4 a5 43.bxa5 bxa5 44.Rh2 c5 -+(-6.45)] 38.Kf3 e2 39.Kxe2 Rxg2+ 40.Kf3** Very slight advantage for black ∓-0.34) ½-½

RESERVE SECTION

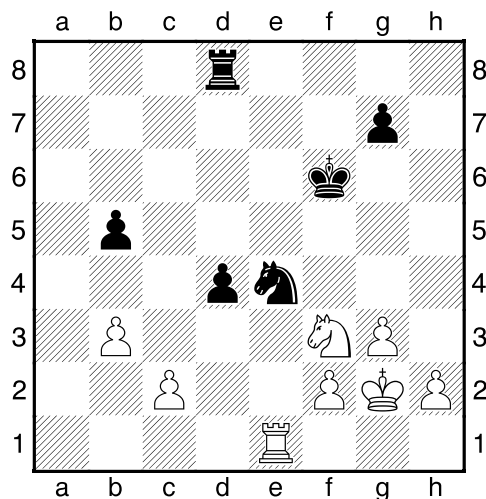
(15) John McDowell (1430) – Chris Talbot (1598) [A01]

2016 Kansas Open (Rd 2), 26.09.2016

A01: Nimzowitsch–Larsen Opening **1.b3** A game with a lot of tactical possibilities **1...e5 2.e3 Nc6 3.Bb2** last book move **3...Bc5 4.Be2 d6 5.d3 Nf6 6.Nd2 Bf5 7.Ngf3 h6 8.a3 a6 9.d4 exd4 10.exd4 Ba7 11.Nc4 0-0 12.0-0 d5 13.Nce5 Ne7 14.Bd3 Bxd3 15.Qxd3 Ne4 16.Bc1 Ng6 17.Nxg6 fxc6= 18.Ne5? Qf6?** appears at first to miss a simple knight fork [18...Nxf2! This move is found by a computer, not by a human. black to get advantage 19.Rxf2 Rxf2 20.Kxf2 Qh4+ 21.Ke2 Bxd4 -+(-2.67)] **19.Nd7 Qxd4** Diagram



20.Qxd4? [20.Nxf8 Qxa1? looks ok, but drops d5 pawn and e4 knight with advantage to white (20...Rxf8 slight advantage white. A very complicated line 21.Be3 Qxd3 22.cxd3 d4 23.Bxh6 Nc5 ±(1.08)) 21.Qxd5+ Kxf8 22.Qxe4 +-(2.03)] **20...Bxd4 21.Nxf8 Bxa1 22.Nxg6 c6? 23.Bxh6!** simple tactic to win pawn **23...Bb2 24.Bc1 Bd4 25.Be3 Bb2 26.a4 Nc3 27.g3 d4! 28.Bd2** [28.Bxd4? Ne2+ 29.Kg2 Nxd4 -+(-2.02)] **28...Ne4 29.Ba5 b5?** drops a second pawn **30.Ne7+ Kf7 31.Nxc6 Rc8 32.axb5 axb5 33.Rb1** [33.Nd8+ works also 33...Kf6 34.Re1 Nc5 35.Re2 +-(1.77)] **33...Bc3 34.Bxc3 Nxc3 35.Ne5+ Kf6 36.Nf3 Rd8 37.Kg2 Ne4 38.Re1** Diagram

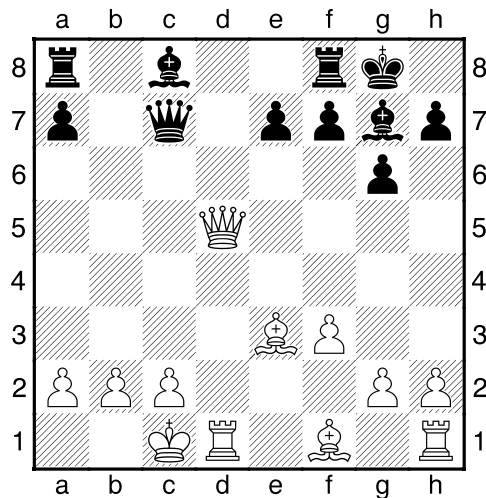


actually this move is not recorded on the score sheet, but it is the only move that makes sense considering the result and resignation **38...Kf5?** [38...d3 best but difficult to see 39.cxd3 Nc5 40.Re5 Nxb3 41.Rxb5 Rxd3 white is still winning here +-(3.63)] **39.Nh4+! Ke5** no way to save the knight **40.f3 1-0**

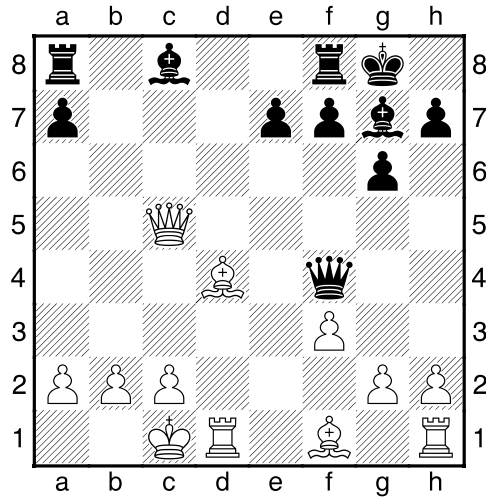
(16) Eddison Chen (1450) – Laurence Coker (1577) [B76]

2916 Kansas Open (Rd 3), 16.07.2016

B76: Sicilian Dragon: Yugoslav Attack, 9 g4 and 9 0-0-0 **1.e4 c5 2.Nf3 d6 3.d4 cxd4 4.Nxd4 Nf6 5.Nc3 g6 6.Be3 Bg7 7.f3 Nc6 8.Qd2 0-0 9.0-0-0 d5 10.Nxc6 bxc6 11.exd5 Nxd5 12.Nxd5 cxd5 13.Qxd5 Qc7** Diagram



14.Qc5 14. Qxa8 is unclear and white is exposed to attack [14.Qxa8 Bf5 15.Qxf8+ Kxf8= equal but risky for white] **14...Qb8** last book move [14...Qb7 Better 15.b3 Bf5 16.Bd3 Rac8 17.Qa5 Rc3 18.Bxf5 Rxe3 19.Be4 Qc8 20.g4 ±(0.46)] **15.Bd4 Qf4+** Diagram

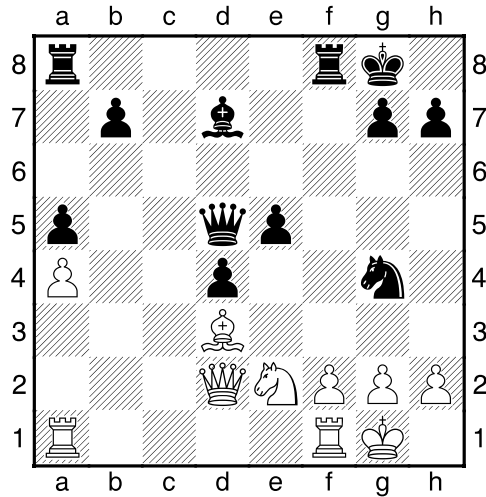


16.Kb1? [16.Be3 Qb8 17.c3 $\pm(-1.50)$ (17.b3 $\pm(0.96)$)] **16...Rd8!**
17.c3? [17.Qxe7 Bf5 18.Bc4 Rxd4 19.Bxf7+ Kh8 20.Bb3 Rc8 $\pm(-2.82)$] **17...e5 18.Qc7 Bf5+** [18...Qf6 works also; 18...Be6 works also]
19.Bd3 Rac8 20.Qxa7 [20.Qa5 Only a little better 20...Bxd3+ 21.Rxd3 exd4 22.g3 Qf6 23.Rhd1 Qc6 24.b3 Rd5 25.Qa4 Qxa4 26.bxa4 Rb8+ 27.Kc2 Rc5 $\pm(-5.86)$] **20...exd4** White resigns **0-1**

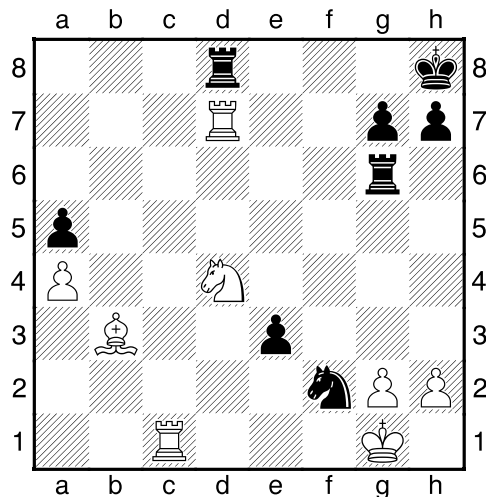
(17) Ryan Duan (1422) – Malachi Fowler (1122) [C06]

2016 Kansas Open Overland Park (Rd 2), 16.07.2016

C06: French Tarrasch: 3...Nf6 4 e5 Nfd7 5 Bd3 main lines **1.e4 e6 2.d4 d5 3.Nd2 Nf6 4.e5 Nfd7 5.Bd3 c5 6.c3 Nc6 7.Ngf3 Qb6 8.0-0 cxd4 9.cxd4 Nxd4 10.Nxd4 Qxd4 11.Nf3= Qb6** last book move **12.Re1 Bc5 13.Rf1** [13.Qc2 better] **13...f6 14.exf6 Nxf6 15.a3 a5 16.b3 0-0 17.Bb2 Bd7 18.Bd4? Bxd4 19.Nxd4 e5 20.Ne2 Ng4 21.Qe1 Qxb3 22.Qd2 d4 23.a4 Qd5** Diagram



24.Rfb1? e4? [24...Rxf2! crushing attack 25.Qa2 Rxc2+ 26.Kf1 Nxc2+ 27.Ke1 Nf3+ 28.Kf1 Qxa2 29.Rxa2 Bh3 -+(-12.45)] **25.Bc2 Kh8?** [25...Qe5! 26.g3 (26.Bb3+ Kh8 27.g3 Rxf2 28.Qxd4 Rxe2 -+(-9.62)) 26...Nxc2 27.Kxc2 Rxf2+ 28.Kg1 Qh5 29.Kxf2 Qh2+ 30.Ke1 Qh1+ 31.Kf2 Rf8+ 32.Nf4 Qh2+ 33.Ke1 Qg1+ 34.Ke2 Bg4#] **26.Qxd4 Qxd4 27.Nxd4 Nxf2 28.Rxb7 Rad8 29.Rf1 e3 30.Bb3?** [30.Nf3 -+(-1.77)] **30...Rf6?=[** [30...Bc8! discovered attack 31.Re7 Rxd4 32.Rxe3 Rdf4 -+(-4.18)] **31.Rc1 Rg6?** [31...Rd6 -+(-2.18)] **32.Rxd7** Diagram



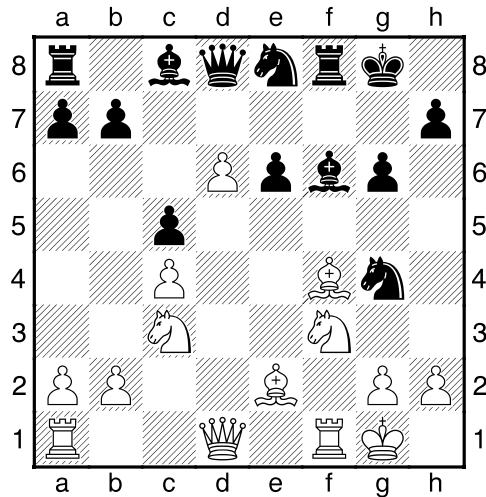
white now with advantage. Back row mate threatened. The rook can't be taken. **32...Rf8 33.Rf7 Nh3+ 34.Kf1 Rxf7+ 35.Bxf7 Rf6+ 36.Nf3**

e2+ 37.Kxe2 Nf4+ 38.Kf1 g5 39.Bb3 g4 40.Rc8+ There follows 40...Kg7 41. Rg8+ king move 42. Rxc4 1-0

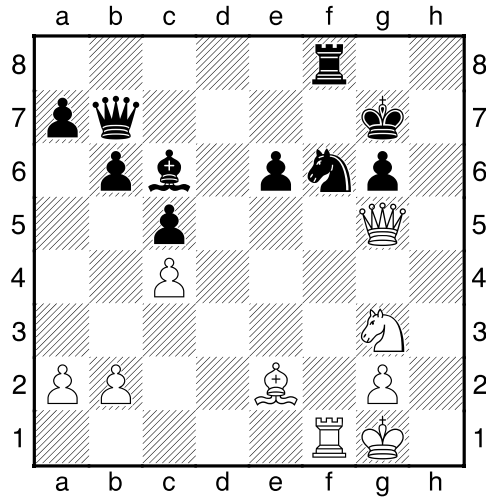
**(18) Randy Merrell (1526) – Edward Nathan Perry (1360)
[E77]**

2016 Kansas Open Overland Park (Rd 1), 16.07.2016

E77: King's Indian: Four Pawns Attack: 6 Be2 incl 6...c5 7 d5 e6 8 Nf3, but not Benoni **1.d4 Nf6 2.c4 g6 3.Nc3 Bg7 4.e4 d6 5.f4 0-0 6.Nf3 c5 7.d5 e6 8.Be2 Na6 last book move 9.0-0 Nc7?** [9...exd5 better and book line 10.cxd5 Bg4 11.h3 Bxf3 12.Bxf3 Nd7 ±(0.61)] **10.e5 dxe5 11.fxe5 Ng4 12.d6 Ne8 13.Bf4 f6 14.exf6 Bxf6** Diagram



15.h3? [15.Qd2! better +-(2.78)] **15...Bxc3!** **16.Bg5?** [16.bxc3 Rxf4 17.hxg4 Qxd6 18.g5 ∓(-0.82)] **16...Bf6 17.hxg4 Bxg5 18.Nxg5 Rxf1+ 19.Bxf1 Qxd6** [19...Qxg5! Better 20.d7 Qe3+ 21.Kh1 Bxd7 22.Qxd7 Nf6 23.Qxb7 Rf8 24.Qf3 Qe5 25.Qc3 Qg5 -+(-2.75)] **20.Qf3 Qe7 21.Ne4 Bd7 22.Qe3 b6 23.Be2 Nf6?** walking into pin [23...Bc6 24.Rd1 e5 ∓(-0.88)] **24.Qg5!** advantage for white **24...Kg7 25.Rf1 Rf8 26.Qe5 h6 27.g5 hxg5 28.Qxg5 Bc6 29.Ng3 Qb7?** Diagram

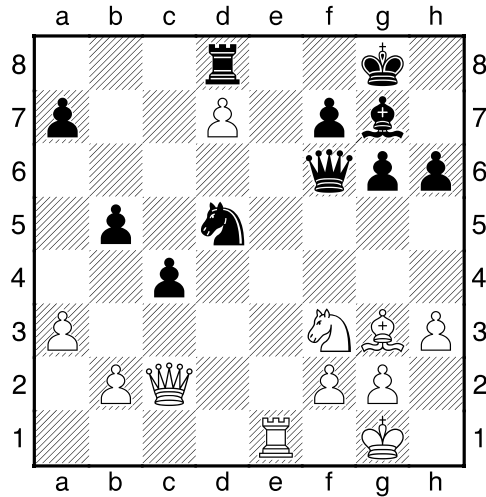


losing move **30.Rxf6! Rxf6 31.Nh5+ Kh8 32.Qxf6+ Kh7 33.Nf4 Be4 34.Bf3** [34.Nxe6! Bf5 35.Bf3 mate in 14. no good squares for queen to go] **34...Bxf3 35.Qxg6+ Kh8 36.Qh6+ Kg8 37.Qxe6+ Kh7 38.Qh3+ Kg8 39.Qxf3 Qf7 40.Qd5** easy win for white now **1-0**

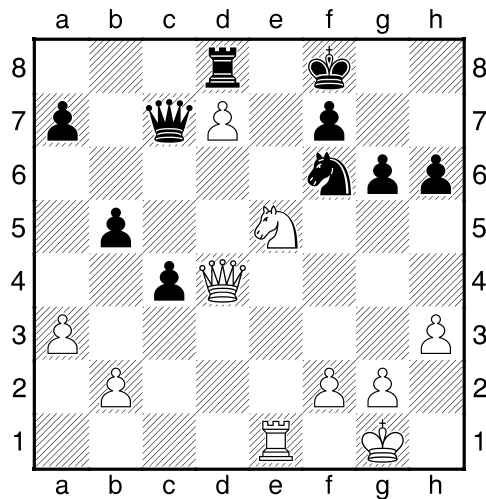
(19) Josh Stimpfle (1548) – Ryan Amburgy (1311) [A70]

2016 Kansas Open (Rd 1), 16.07.2016

A70: Modern Benoni: 6 e4 g6 7 Nf3 1.d4 Nf6 2.c4 c5 3.d5 e6 4.Nc3 exd5 5.cxd5 d6 6.Nf3 g6 7.e4 Bg7 8.Bb5+ Bd7 last book move 9.Qa4 0-0 10.Bxd7 Nbx7 11.0-0 Nb6 12.Qc2 Re8 13.Bg5 Qd7 14.h3 h6 15.Bf4 Re7 16.e5 Nfxd5 17.Nxd5 Nxd5 18.exd6 Re6 19.Bg3 Rc8 20.a3= b5 21.Rfe1 c4 22.Rxe6 Qxe6 23.Re1 Qf6? 24.d7! Rd8 Diagram



25.Be5? = gives away advantage [25.Re8+! Kh7 (25...Bf8 26.Be5 over worked queen) 26.Bh4 wins as "g" pawn is pinned] 25...Qc6 [25...Qf5! 26.Qxf5 (26.Qd2 Qxd7 passed pawn is gone and now black has slight advantage $\mp(-0.89)$) 26...gxf5 27.Bxg7 Kxg7 28.Ne5 Kf6 29.Nc6 Rxd7=] 26.Bxg7 Kxg7 27.Ne5 Qc7 [27...Qd6 better] 28.Qe4 Nf6 29.Qd4 Kf8? Diagram

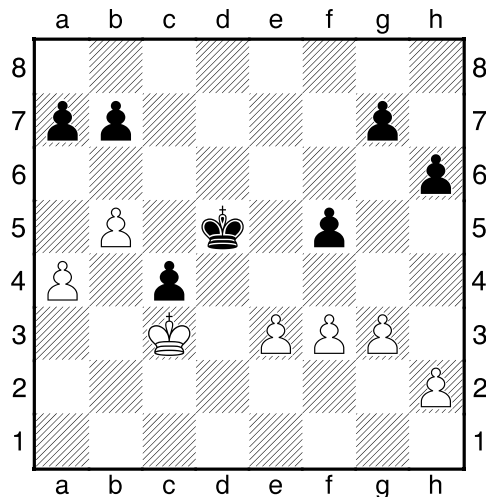


losing move 30.Nxg6+ Kg7 31.Ne5 Kg8 32.Qf4 Kg7 33.Re3 the old rook lift 33...Qd6 34.Rg3+ Kh7 35.Qf5+ mate in one 1-0

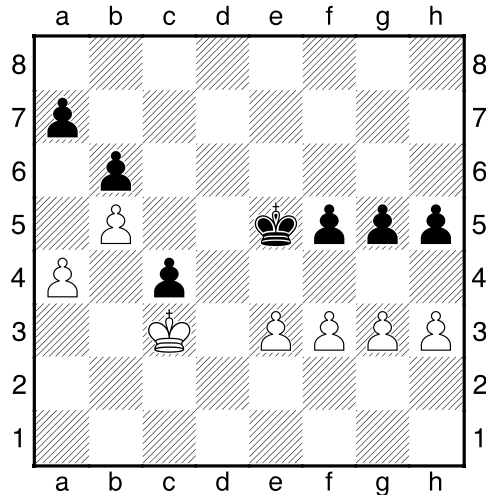
(20) Cael Province (1422) – Russell Stinson (1495) [D56]

2016 Kansas Open (Rd 3), 16.07.2016

D56: Queen's Gambit Declined: Lasker Defence **1.d4** A very instructive king and pawn endgame where black is winning but makes a big mistake pushing the wrong pawn and goes from big advantage to big disadvantage **1...e6 2.c4 d5 3.Nc3 Nf6 4.Bg5 Be7 5.Nf3 0-0 6.e3 h6 7.Bh4 Ne4 8.Bxe7 Qxe7 9.Nxe4 dxe4 10.Nd2 f5** last book move **11.Qb3 e5 12.d5 c6 13.d6 Qf7** [13...Qxd6? loses 14.c5+ Be6 15.cxd6 Bxb3 16.axb3 +-(3.91)] **14.c5 Be6 15.Bc4 Bxc4 16.Qxc4 Qxc4 17.Nxc4 Na6 18.Nxe5= Nxc5 19.b4** [19.0-0-0 better, but minimal advantage for white $\pm(0.47)$] **19...Nd3+ 20.Nxd3 exd3 21.Kd2 Rad8 22.Kxd3 Rxd6+ 23.Ke2 Rfd8 24.Rad1 Rxd1 25.Rxd1 Rxd1 26.Kxd1** a king and pawn endgame with black having slight advantage **26...Kf7 27.Kd2 Ke6 28.Kd3 Kd5 29.f3 c5 30.b5 c4+ 31.Kc3= Kc5 32.a4 Kd5 33.g3=** Diagram



33...g5? [33...h5 best with advantage for black 34.Kc2 g5 +(-2.09)]
34.h3? [34.g4 now white is winning 34...fxg4 35.fxg4 b6 +-(3.79)]
34...h5 35.Kc2? [35.a5 better but still losing 35...b6 36.h4 gxh4 37.axb6 axb6 38.gxh4 +(-3.79) 38...Kc5] **35...Kc5 36.Kc3 Kd5 37.Kc2 b6 38.Kd2 Ke5 39.Kc3** Diagram

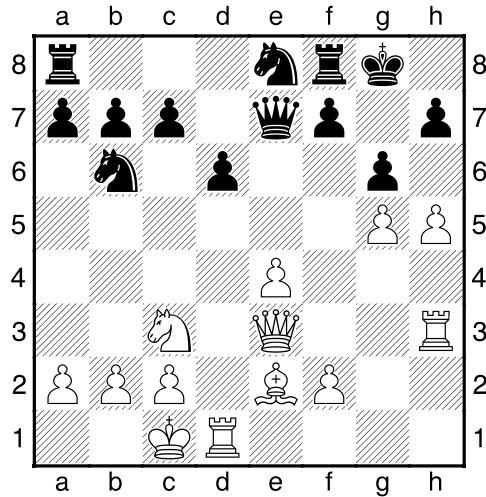


39...f4?? wrong pawn [39...g4 wins 40.fxg4 (40.hxg4 fxg4 41.f4+ Kd6 42.Kxc4 (42.e4 h4!) 42...h4 43.gxh4 g3 44.h5 g2 45.h6 g1Q 46.h7 Qg7 -+(-15.33)) 40...fxg4 41.hxg4 hxg4 42.Kxc4 Ke4 43.a5 bxa5 44.Kb3 Kxe3 45.Ka4 Kf3 -+(-9.94)] **40.exf4+ gxf4 41.g4 Kf6** [41...hxg4 not any better 42.hxg4 Kd5 43.g5 Ke6 44.Kxc4 Kf5 45.Kd4 +-(12.12)] **42.Kxc4 Kg5 43.Kd4 Kh4** [43...hxg4 doesn't help 44.hxg4 +-(14.90)] **44.gxh5 Kxh5 45.Ke4 Kg5 46.h4+ Kf6 47.h5 Kg7 48.Kxf4 Kh6 49.Kg4 Kh7 50.f4 a5 51.f5 Kg7 52.Kg5 Kh7 53.f6 Kh8 54.Kg6 Kg8 55.f7+ Kf8 56.h6 Ke7 57.Kg7 Ke6 58.f8Q Kd5 59.Qf5+ Kc4 60.Qf4+ Kc3 61.Qf3+ Kc4 62.Qe4+ Kc3 63.Kf6 Kd2 64.Qf3 Kc2 65.Ke5 Kb2 66.Kd4 Ka2 67.Kc3 Ka3 68.Qd3 Kxa4 69.Qc4+ Ka3 70.Qb3# 1-0**

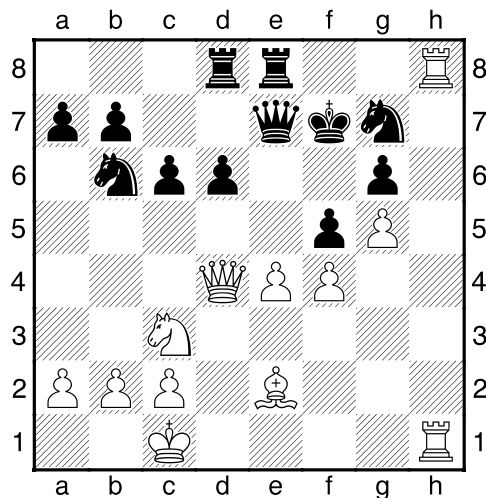
(21) Joseph Serwadda (unrated) – Josh Stempfle (1548)
[B07]

2016 Kansas Open Overland Park (Rd 4), 17.07.2016

B07: Pirc Defence: Miscellaneous Systems **1.Nc3 Nf6 2.e4 d6 3.d4 Nbd7 4.Be3 g6** last book move **5.Qd2 Bg7 6.Be2 e5 7.0-0-0 0-0 8.g4 Ne8?** [8...b5! 9.Bxb5 (9.Nxb5 Nxe4 slight advantage black \mp (-0.97)) 9...Nxc4 10.Nf3 Nxe3 11.fxe3=] **9.h4 exd4 10.Bxd4 Bxd4 11.Qxd4 Qf6 12.Qe3 Nb6 13.g5 Qe7 14.h5 Be6 15.Nh3 Bxh3** allowing a tempo for white to double rooks [15...Bc4 better though still with advantage for white +-(2.19)] **16.Rxh3** Diagram



16...f5? weakens kingside position and is losing move **17.hxg6 hxg6**
18.Rdh1 Ng7 19.Rh7 c6 [19...Kf7 still losing but better $\pm(-5.58)$]
20.f4 Rad8 21.Qd4 Rfe8 22.Rh8+ Kf7 Diagram



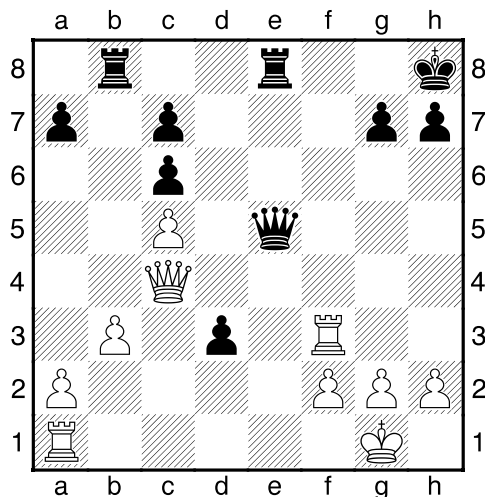
23.Qxg7+! Ke6 24.Qxg6+ Kd7 25.R8h7 1-0

(22) Krishna B-Nair (1423) – Cael Province (1422) [C56]

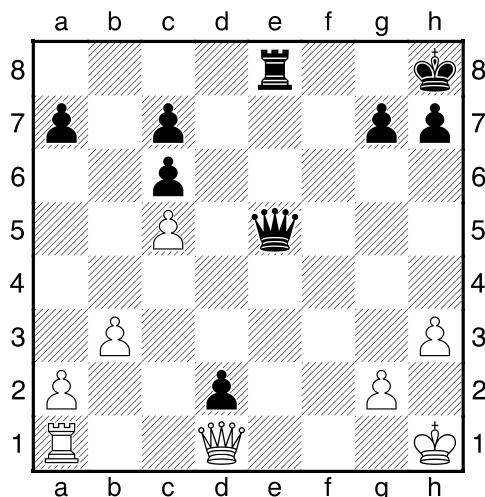
2016 Kansas Open (Rd 2), 16.07.2016

C56: Two Knights: 4 d4 exd4 5 0-0 Nxe4 1.e4 e5 2.Nf3 Nc6 3.d4
 exd4 4.Bc4 Nf6 5.e5 d5 6.Bb5 Ne4 7.0-0 Bd7 8.Bxc6 Bxc6 9.Nxd4
 Bc5 last book move 10.Be3 Bb6 11.Nxc6 bxc6 12.Re1 Bxe3
 13.Rxe3 Qg5 14.c4 Qf5 15.Qe2 0-0 16.Nc3 Nxc3 17.Rxc3 d4

18.Rf3 Qg5 19.c5 Rfe8 20.Qc4 Qxe5 21.Qxf7+ Kh8 22.Qc4 Rab8
 23.b3? d3! Diagram



24.Qc1? white losing now [24.Rf1 d2 25.Re3 Qh5 26.g4 Qg5 27.Qe2 Rxe3 28.fxe3 Qd5 29.Rd1 Rd8 30.Kf2 h6 31.h3 a6 Black with advantage with passed pawn but white not totally lost -+(-1.42)]
24...Qe2? = mistake by black [24...d2! discovered attack 25.Qf1 Qxa1 26.Rf8+ Rxf8 27.Qxa1 Rfe8 28.Kf1 Rb5 29.Qd1 Re1+ 30.Qxe1 dxe1Q+ 31.Kxe1 Rxc5 -+(-7.64)] **25.Re3?** white returns the favor [25.Qf1 Rbd8 26.Rd1 Kg8 27.h4 d2 28.Qxe2 Rxe2 29.Re3 Rxe3 30.fxe3 Kf7 31.Kf2=] **25...d2 26.Qd1?** [26.Qf1 Better, though black still winning -+(-3.38)] **26...Rxe3 27.fxe3 Qxe3+ 28.Kh1 Re8 29.h3 Qe1+ 30.Kh2 Qe5+ 31.Kh1** Diagram



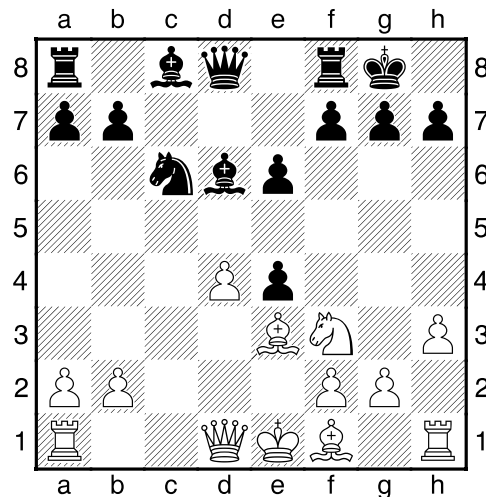
31...Qxa1! 32.Qxa1 Re1+ 33.Qxe1 dxe1Q+ 0-1

AMATEUR SECTION

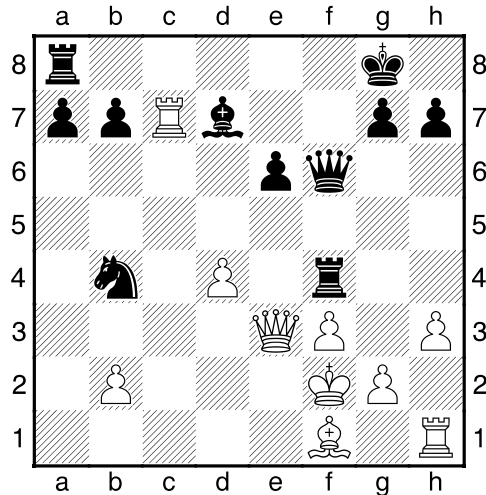
(23) Thomas Claman (1136) – Manohar Kyathsandra (1324) [B40]

2016 Kansas Open (Rd 2), 16.07.2016

B40: Sicilian: 2...e6, Unusual lines 1.e4 e6 2.d3 c5 3.Nf3 Nc6 last book move 4.Be3 Nf6 5.h3 d5 6.Nbd2 Bd6 7.c3 0-0 8.d4? loses pawn 8...cxd4 9.cxd4 Nxe4 10.Nxe4 dxe4 Diagram



11.Ng5? knight on this square has no exit and is in position to be lost. Better is Nd2 though black still with advantage [11.Nd2 f5 12.g3 Nb4 13.Nc4 Nd5 14.Nxd6 Qxd6 15.Qb3 Bd7 -+(-2.58)] 11...Bb4+ 12.Ke2 [12.Bd2 no better 12...Qxg5 knight is hanging 13.Bxb4 Nxb4 -+(-6.84)] 12...Qd5 13.Qc2 f5 14.a3 f4 [14...Be7 slightly better] 15.axb4 fxe3 16.Qxe4 Qxg5 17.f3 Rf4 18.Qxe3 Nxb4 19.Rc1 Bd7 20.Kf2 Qf6 21.Rc7? Diagram

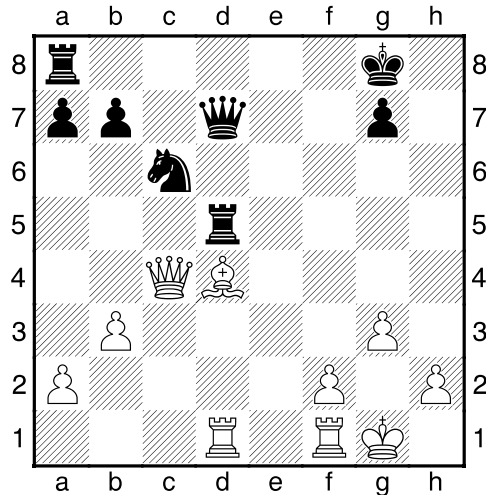


[21.Bc4 better, but still losing $-+(-5.84)$] **21...Nd5!** **22.Qxf4** [22.Qe5 no better 22...Qxe5 23.dxe5 Nxc7 $-+(-12.22)$] **22...Qxf4** **23.Rxd7 Qxd4+** white pawns are falling **24.Kg3 Qe5+** **25.Kf2 Qxb2+** **26.Be2 Nf4** **27.Re1 a5** **28.Rdd1 a4** **29.Rb1 Qd4+** **30.Kf1 a3** **31.Red1 Nxe2** **32.Kxe2 Qe5+** **33.Kf2 a2** **34.Ra1 b5** **35.Re1 Qb2+** **36.Kg3 b4** 0-1

(24) Chad Kern (unrated) – John Ely (946) [A22]

2016 Kansas Open (Rd 2), 16.07.2016

A22: English Opening: 1...e5 2 Nc3 Nf6 1.c4 e5 2.Nc3 Nf6 3.g3 Bc5 4.Bg2 0-0 5.e3 d6 6.Nge2 c6 7.0-0 last book move 7...Be6 8.d3 d5 9.cxd5 cxd5 10.d4 exd4 11.Nxd4 Qd7 12.Nxe6 fxe6 13.b3 Nc6 14.Bb2 d4 15.Ne4 [15.Na4 actually better] 15...Nxe4 16.Bxe4 Rf7 [16...Bb6 better] 17.Bxh7+ [17.Qh5 actually better 17...Rf5 (17...Bb6?? 18.Qxh7+ Kf8 19.Ba3+) 18.Bxf5 exf5 19.exd4 Nxd4 20.Bxd4 Bxd4 21.Rad1 $+-(4.71)$] 17...Kxh7 18.Qh5+ Kg8 19.Qxc5 e5 20.exd4 exd4 21.Rad1 Rf5 22.Qc4+ Rd5 23.Bxd4? Diagram

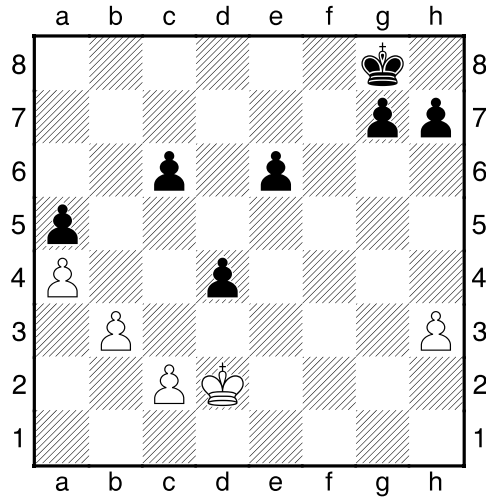


23...Nxd4? Losing move [23...b5! Now black is winning 24.Qd3 (24.Qxd5+ Qxd5 25.Bxg7 Qf5 26.Ba1 -+(-3.06)) 24...Nxd4 25.Rde1 Rc8 -+(-2.91)] **24.Rxd4 Rd8 25.Rfd1 Qf5 26.Rxd5 Rxd5 27.Qxd5+** [27.Rxd5 actually this is better, as it threatens the queen plus threatens discovered check] **27...Qxd5 28.Rxd5 Kh7 29.Rd7 Kh6 30.Rxb7 a6 31.Ra7 g5 32.Rxa6+ Kh5 33.b4 Kg4 34.b5 Kh3 35.a4 g4 36.Rh6# 1-0**

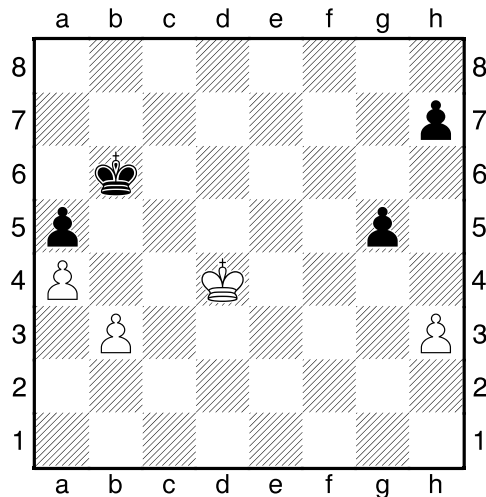
(25) Manohar Kyathsandra (1324) – Chad Kern (unrated) [B44]

2016 Kansas Open (Rd 3), 16.07.2016

B44: Sicilian: Taimanov: 5 Nb5 1.e4 c5 2.Nf3 Nc6 3.d4 cxd4 4.Nxd4 e6 5.h3 last book move 5...Bc5 6.Be3 Qb6 7.Nxc6 Bxe3 8.fxe3 Qxe3+ 9.Qe2 Qg3+ 10.Kd2 bxc6 11.Nc3 a5 12.a4 Ba6 13.Qf3 Qxf3 14.gxf3 Bxf1 15.Rhxf1 Ne7 16.Rg1 0-0 17.Ne2 Ng6 18.Ra3 f5 19.Ng3 fxe4 20.Nxe4 Ne5 21.Kc1 Rxf3 22.Rxf3 Nxf3 23.Rg3 Rf8 24.Nc5 Nd4 25.Rd3 Rf1+ 26.Kd2 d6 27.Rxd4 dxc5 28.Rd6 Rf4 29.b3 Rd4+ 30.Rxd4 cxd4 Diagram



31.Kd3?? [31.b4! wins 31...axb4 32.a5 Kf7 33.a6 g5 34.a7 e5 35.a8Q] **31...c5= 32.Kc4 Kf7 33.Kxc5 Kf6?** [33...e5 34.b4 axb4 35.Kxb4 e4 36.Kc4 e3 37.Kd3 Ke6 38.c3 dxc3 39.Kxe3 Kd5 40.Kd3 c2 41.Kxc2 Kc4 42.h4 Kb4 43.Kd3 Kxa4 44.Ke4 Kb4 45.Ke5 g6 46.Kf6 Kc5 47.Kg7 h5 48.Kxg6 Kd6 49.Kxh5 Ke7 50.Kg6 Kf8=] **34.Kxd4 Kf5 35.c4?** [35.b4! wins 35...e5+ 36.Ke3 Ke6 37.bxa5 Kd6 38.Ke4 g5 39.Kf5 Kc5 40.Kxg5 e4 41.Kf4 +-(14.18)] **35...e5+ 36.Kc3?** [36.Kd5 e4 37.c5 e3 38.c6 e2 39.c7 e1Q 40.c8Q+=] **36...e4 37.c5 e3 38.Kd3 Ke5 39.c6 Kd6 40.c7 Kxc7 41.Kxe3 Kb6 42.Kd4 g5** Diagram

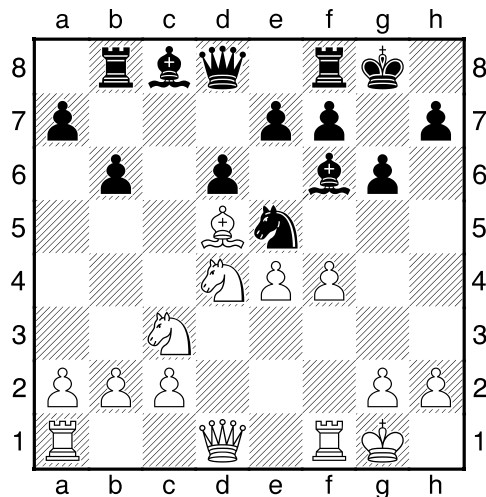


43.Kd5? loses [43.Ke5! Kc5 (43...h5 doesn't work either 44.Kf5 g4 45.hxg4 hxg4 46.Kxg4 Kc5 47.Kf4 Kb4 48.Ke3 Kxb3 49.Kd2 Kxa4 50.Kc2 Ka3 51.Kb1 a4 52.Ka1=) 44.Kf6 Kb4 45.Kxg5 Kxb3 46.Kh6 Kxa4 47.Kxh7 Kb4 48.Kg8 a4 49.h4 a3 50.h5 a2 51.h6 a1Q 52.h7=] **43...h5 44.Kc4 g4 45.h4 g3 46.b4 axb4 0-1**

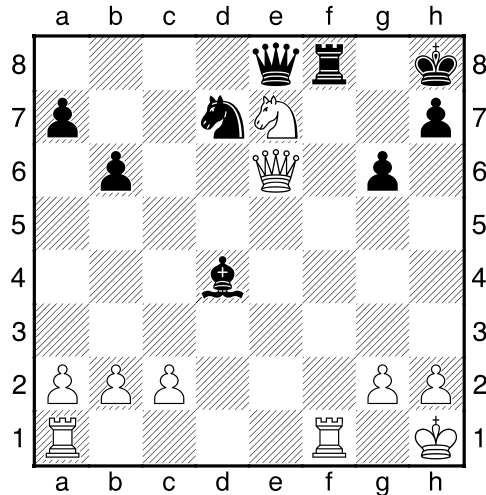
(26) Liam McKinney (828) – Austin Tran (845) [B70]

2016 Kansas Open (Rd 4), 17.07.2016

B70: Sicilian Dragon: 6 g3 and 6 Be2 (without a later Be3) **1.e4 c5 2.Nf3 d6 3.d4 cxd4 4.Nxd4 Nf6 5.Bd3 g6 last book move 6.Nc3 Bg7 7.0-0 0-0 8.Bg5 Nbd7 9.Bc4 Ne5= 10.Bb3 b6? 11.Bxf6 Bxf6 12.Bd5 Rb8?** [12...Ba6! 13.Bxa8 Bxf1 14.Qxf1 Qxa8 15.Nd5 Bh4 16.g3 (16.Rd1=) 16...e6! 17.Nc3 Bf6 slight advantage for black $\bar{\mp}$ (-0.41)] **13.f4** Diagram



13...Nd7? loses exchange [13...Ng4! difficult to see 14.Nc6 Qc7 15.Nxb8 Bxc3 16.bxc3 Ne3 17.Qd3 Nxf1 18.Rxf1 slight advantage for black $\bar{\mp}$ (-0.32)] **14.Nc6 Qe8 15.Nxb8 Nxb8 16.Qe2 Bd7?** [16...Ba6 better, though white still has advantage 17.Bc4 Bd4+ 18.Kh1 Bxc3 19.bxc3 $\bar{\mp}$ (-1.45)] **17.e5! dxe5 18.fxe5 Bg7 19.e6! Bxe6 20.Bxe6 fxe6 21.Qxe6+ Kh8 22.Nd5 Bd4+ 23.Kh1 Nd7 24.Nxe7?** Diagram

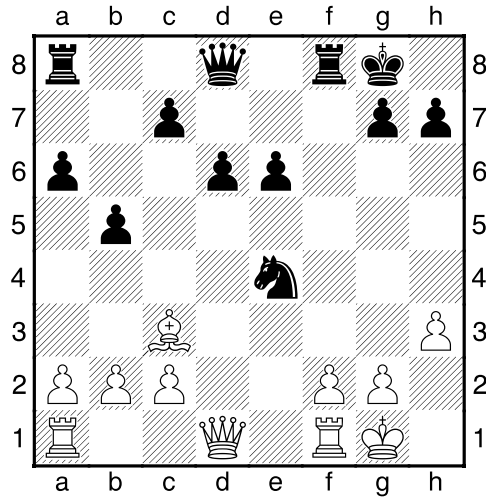


[24.c3 better] **24...Bc5?** loses [24...Bf6! 25.Rxf6 Nxf6 26.Re1 white with only mild advantage equal to extra pawn $\pm(0.85)$] **25.Rxf8+ Nxf8?** loses very quickly [25...Qxf8 necessary though still losing 26.Nxg6+ hxg6 27.Qxd7 $\pm(-5.73)$] **26.Qf6# 1-0**

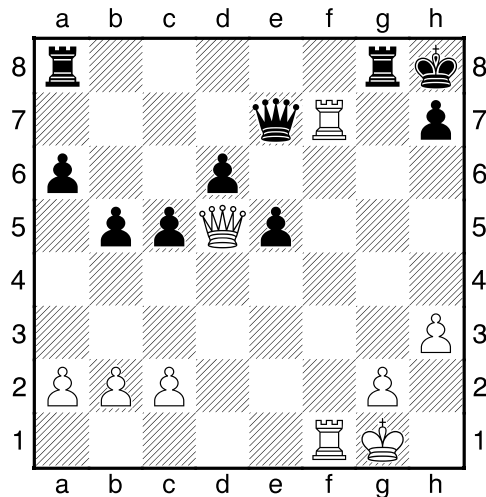
(27) Noah Baden (unrated) – Skyler Vince (787) [C77]

2016 Kansas Open Overland Park (Rd 3), 16.07.2016

C77: Ruy Lopez: 3...a6 4 Ba4 Nf6, unusual lines **1.e4 e5 2.Nf3 Nc6 3.Bb5 a6 4.Ba4 Nf6 5.Nc3 Bb4 6.d3 b5 7.Bb3 d6 8.0-0 Bg4 9.Be3** last book move **9...0-0 10.h3 Be6 11.Bxe6 fxe6 12.d4 exd4 13.Nxd4 Nxd4 14.Bxd4** [14.Qxd4= better 14...c5 15.Qd3 c4 16.Qe2 Bxc3 17.bxc3 Nxe4 18.Qg4 d5 19.Qxe6+ Rf7 20.Bd4=] **14...Bxc3 15.Bxc3 Nxe4** Diagram



16.Bxg7! Nxf2 17.Qd4?! slight advantage for black here now ♣ (-0.77) [17.Rxf2=] **17...e5 18.Rxf2 Kxg7** [18...exd4! better for black 19.Rxf8+ Qxf8 20.Bxf8 Rxf8 slight advantage for black ♣(-0.94)] **19.Qg4+ Kh8 20.Raf1 Rg8= 21.Qf3 c5 22.Qd5 Qe7** [also a good move 22...Rg6 23.Rf8+ (23.Rf7 Rb8 24.R1f5 Qh4 25.Rf8+ Rxf8 26.Rxf8+ Kg7 27.Rg8+ (27.Qf7+ Kh6=) 27...Kh6 28.Rxg6+ hxg6 29.Qxd6 Qe1+=) 23...Qxf8 24.Rxf8+ Rxf8 black with slight advantage here though some might prefer to have the queen ♣ (-0.50)] **23.Rf7=**
Diagram



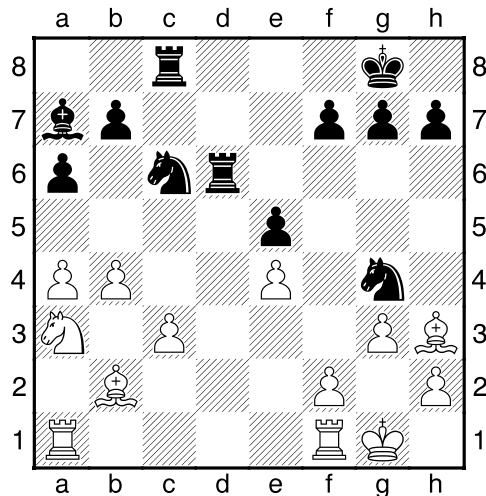
23...Qd8? [23...Qh4 24.Qxd6 Qd4+ 25.Qxd4 cxd4=] **24.R1f6 Qe8?** losing move **25.Rxd6** [25.Qb7 better] **25...Rd8?** [25...Rg7 necessary]

but still losing 26.Rxg7 Kxg7 27.Rd7+ Kh8 28.Qd6 Kg8 29.Re7 Qg6
 30.Qd5+ Kf8 31.Qxc5 Kg8 32.Qd5+ Kf8 33.Re6 +-(11.82)] **26.Rxd8
 Qxd8 27.Qxe5+ Qf6 28.Qxf6+ Rg7 29.Qxg7# 1-0**

(28) Tyler Patton (unrated) – Chris Amburgy (974) [B40]

2016 Kansas Open (Rd 2), 16.07.2016

B40: Sicilian: 2...e6, Unusual lines **1.e4 c5 2.Nf3 e6 3.d4 cxd4
 4.Nxd4 Nc6 5.Nc3 a6 6.a4 Bb4** last book move **7.g3 Qc7 8.Bg2 Nf6
 9.0-0 0-0 10.Nb1 e5 11.Nf5 d6?** [11...d5! 12.exd5 Bxf5 13.dxc6 Rad8
 14.Qe2 Bg4 15.f3 Be6 advantage black +(-1.43)] **12.c3 Bc5 13.b4
 Ba7 14.Qxd6 Qxd6 15.Nxd6 Rd8 16.Nxc8 Raxc8 17.Bb2= Rd6
 18.Na3 Ng4? 19.Bh3** Diagram



19...Nxf2? probably losing move [19...h5 20.Bxg4 hxg4 +-(1.38)]
20.Bxc8 Nd3+ [20...Rd2 slightly better] **21.Kg2 Nxb2 22.Bxb7
 Nxa4?** [22...Ne7 better, but still losing 23.Ra2 Nd1 24.Nc4 Ne3+
 25.Nxe3 Bxe3 +-(5.92)] **23.Nc4 Rd3 24.Rxa4 Rxc3 25.Bxc6 Rxc4
 26.Rxa6 f6?** one last mistake **27.Bd5+ 1-0**