



2015 Winter/Spring

**PLAINS
CHESS**

This is the **2015 Winter/Spring** edition of **PLAINS CHESS**, the Kansas Chess Bulletin. Much has gone on since the Fall 2014 edition. There have been several local tournaments, though none as large as the annual Kansas Open. Some Kansas chess players have been in the news. There was the annual fund raiser by our booth at the Renaissance Festival.

Bulletin contents

- 1. Local tournaments- pages 3 to 9**
- 2. Upcoming events- pages 9 and 10**
- 3. Local news- pages 10 and 11**
- 4. Renaissance Festival- pages 11 to 14**
- 5. Bulletin games- pages 15 to 43**
- 6. List of past KCA Presidents- page 44**

LOCAL TOURNAMENTS-----

The have been **ICCC rated tournaments** in October and December of 2014. Both were held at the Indian Creek Community Church (ICCC) in Olathe, KS.

The **October 11th ICCC** tournament had 16 players. Tim Steiner finished by himself with 4 points possible out of 4 points with 4 straight wins. There was a 4 way tie for second at 3 points by Abhishek Mallella, Jason Wawrzaszek, Luke Majeske, and Sho Glashausser. http://main.uschess.org/assets/msa_joomla/XtblMain.php?201410112352

The **December 6th ICCC** tournament had 18 players. Sam Un finished by himself with 4 points out of 4. Joey Kelly and William Dunlap finished next with 3 points. http://main.uschess.org/assets/msa_joomla/XtblMain.php?201412063982

New for the ICCC tournaments in October and December was the option for scholastic players to play for non-cash prizes. They received a lower entry fee and did not compete for money prizes. This is important for scholastic players to be able to compete for non-cash prizes at Kansas tournaments during the school year. That way they remain eligible for the scholastic state championship, this year held in Wichita March 14th

The **Lindsborg Open** was held December 20th, 2014. There were 17 participants in the USCF rated section. Finishing first by himself was Joshua Fernandes with 3.5 points. There was a four way tie for second with Hyung Ju Nam, Sho Glashausser, Sheena Zeng, and Braden Johnson all finishing with 3 points out of 4. Grandmaster Timar Gareev made an appearance and helped with game analysis. <http://www.uschess.org/msa/XtblMain.php?201412204652>



2014 Lindsborg Open- Hyung Ju Nam in foreground playing unknown player at Karpov Chess School facility



Grandmaster Timur Gareev going over game with Sho Glashauser

The **New Year Bash** was held January 3rd, 2015. It was held at a new facility this year, the Hilton Garden Inn in Olathe, KS. Brian Yang organized and directed the tourney. He had just made it back from Las Vegas where he directed multiple sections for the North American Open.

The New Year Bash was divided into two sections: Open and Reserve (U1600). There were 39 total players: 16 in Open and 23 in Reserve.

In the **Open section** Missouri player Abhishek Mallela finished all by himself with 4 wins in this one day four round event. A surprise second place was Brian Jiang at 3.5 points, partly as a result of upsetting 2014 Kansas Champion Joey Kelly in the last round. In third place was Kansas player Kaustabh Nimkar and Missouri player Ron Luther at 3.0 points. Ron Luther lost to Abhishek in the last round.

Pair Num	Player Name USCF ID / Rtg (Pre->Post)	Total Pts	Round 1	Round 2	Round 3	Round 4
1	ABHISHEK MALLELA MO 12888811 / R: 2114 ->2133 Q: 2007 ->2026	4.0	W 14	W 11	W 5	W 3
2	BRYAN LIU JIANG KS 14097248 / R: 1705 ->1855 Q: 1582 ->1726	3.5	W 7	D 5	W 12	W 6
3	RONALD LUTHER MO 10365007 / R: 2216 ->2213 Q: 2102 ->2095	3.0	W 9	W 8	W 6	L 1
4	KAUSTUBH SANJAY NIMKAR KS 14100882 / R: 1776 ->1795 Q: 1310 ->1429	3.0	W 16	L 6	W 11	W 8
5	DAVID SAYLER MO 12616509 / R: 1831 ->1847 Q: 1482 ->1554	2.5	W 10	D 2	L 1	W 9
6	JOEY MICHAEL KELLY KS 14143543 / R: 2109 ->2089 Q: 1927 ->1903	2.0	W 13	W 4	L 3	L 2
7	KYLE CAMARDA KS 12399769 / R: 1941 ->1908 Q: 1886 ->1843	2.0	L 2	L 10	W 16	W 13
8	SAM N UN KS 12571317 / R: 1768 ->1763 Q: 1592 ->1578	2.0	W 15	L 3	W 13	L 4
9	RYAN DEERING MO 14765507 / R: 1730 ->1731 Q: 1528 ->1520	2.0	L 3	W 15	W 10	L 5
10	SHEENA ZENG KS 14640432 / R: 1653 ->1674 Q: 1304 ->1384	2.0	L 5	W 7	L 9	W 14

11	SHAMS SHAIKH	1.5	W	12	L	1	L	4	D	16	
KS	12606219 / R: 1568 ->1576										
	Q: 1554 ->1533										
12	SHAKTIPRASAD SHIMPI	1.0	L	11	W	14	L	2	U		
KS	14901082 / R: 1909 ->1872										
	Q: 1718 ->1680										
13	HYUNG JU NAM	1.0	L	6	W	16	L	8	L	7	
KS	14292541 / R: 1691 ->1668										
	Q: 1535 ->1509										
14	SHO GLASHAUSSE	1.0	L	1	L	12	W	15	L	10	
KS	15326071 / R: 1630 ->1606										
	Q: 1423P24->1392										
15	SHRIVATSA S MALLADI	1.0	L	8	L	9	L	14	B		
KS	14329682 / R: 791 -> 790										
	Q: 752P18-> 749P21										
16	RYAN DUAN	0.5	L	4	L	13	L	7	D	11	
KS	14461763 / R: 1184 ->1199										
	Q: 455P8 -> 505P12										



Abhishek Mallela

In the **Reserve section** Ethan Bui finished by himself with 4 wins. His rating went up almost 180 points as a result. There was a four way tie for second at 3 points between Bill Qian, CJ Armenta, Raam Raghunathan, and Gavin Kirchmer.

Pair Num	Player Name USCF ID / Rtg (Pre->Post)	Total Pts	Round 1	Round 2	Round 3	Round 4
1	ETHAN BUI KS 15061846 / R: 1237 ->1411 Q: 1165 ->1312	4.0	W 22	W 4	W 10	W 5
2	BILL NINGYUAN QIAN KS 15206304 / R: 1538 ->1546 Q: 839P19->1075P23	3.0	D 12	W 7	W 16	D 6
3	RAAM NARAYANAN RAGHUNATHAN TX 15612775 / R: Unrated->1521P4 Q: Unrated->1331P4	3.0	W 14	L 10	W 9	W 11
4	CJ ARMENTA MO 12650738 / R: 1499 ->1498 Q: 1467 ->1448	3.0	W 20	L 1	W 13	W 10
5	GAVIN DEAN KIRCHMER KS 14942913 / R: 1309 ->1350 Q: 1163P24->1215	3.0	W 18	W 8	W 11	L 1
6	LAURENCE COKER KS 12174160 / R: 1588 ->1558 Q: 1427 ->1379	2.5	L 13	W 19	W 20	D 2
7	NATARAJAIAH MANOHAR KYATHSANDRA KS 15206503 / R: 1314P16->1324P19 Q: 1170P8 ->1147P11	2.5	H 0	L 2	W 22	W 14
8	VERONIKA VANCSA KS 14967123 / R: 1107 ->1246 Q: 932 ->1118	2.5	W 9	L 5	D 17	W 16
9	GABRIEL RICHARD MAURER KS 15024882 / R: 1441 ->1417 Q: 1288 ->1257	2.0	L 8	W 12	L 3	W 17
10	PETER KELLEN DORAN MO 14891428 / R: 1333 ->1338 Q: 1024P22->1080	2.0	W 19	W 3	L 1	L 4
11	CHINMAY KRISHNA KS 14433377 / R: 1342 ->1328 Q: 1181 ->1173	2.0	W 21	W 17	L 5	L 3
12	RITA MARY JOSEPH KS 14982768 / R: 1272 ->1278 Q: 790 -> 898	2.0	D 2	L 9	W 21	D 13
13	CAROLINE LI JIANG KS 14421840 / R: 1165 ->1259 Q: 981 ->1079	2.0	W 6	D 16	L 4	D 12
14	KEVIN LOUIS KIRCHMER KS 14942907 / R: 1232 ->1227 Q: 1057P24->1043	2.0	L 3	W 23	W 15	L 7
15	SAVINDU BULUWANA KS 14701038 / R: 1096 ->1115 Q: 649 -> 800	2.0	L 16	W 18	L 14	W 20
16	CHARLES DAVID KEARNS MO 12690338 / R: 1439 ->1391 Q: 1591 ->1506	1.5	W 15	D 13	L 2	L 8
17	KAREN L CAMARDA KS 12518273 / R: 1266 ->1235 Q: 1266P10->1191P14	1.5	W 23	L 11	D 8	L 9

18	PHI-LONG H NGUYEN	1.5	L	5	L	15	D	19	W	22	
KS	15327424 / R: 950P13-> 932P17										
	Q: 816P8 -> 788P12										
19	CALEB JAMES PRESCOTT	1.5	L	10	L	6	D	18	W	23	
KS	15283203 / R: 541P3 -> 732P7										
	Q: 541P3 -> 682P7										
20	ANTHONY MARRALE	1.0	L	4	W	21	L	6	L	15	
MO	15469060 / R: 1196P15->1165P19										
	Q: 1043P10-> 997P14										
21	MINH-LONG H NGUYEN	1.0	L	11	L	20	L	12	B	0	
KS	15307677 / R: 979 -> 950										
	Q: 877 -> 819										
22	LOGAN CAMARDA	1.0	L	1	B	0	L	7	L	18	
KS	15093362 / R: 823P18-> 796P21										
	Q: 673P11-> 643P14										
23	STEVEN DUAN	1.0	L	17	L	14	B	0	L	19	
KS	15388611 / R: 771P17-> 730P20										
	Q: 706P12-> 662P15										



1st Place Reserve player Ethan Bui playing second place player Gavin Kirchmer (Ethan won this game- see games at end of bulletin)



Tourney Director Brian Yang in yellow shirt in back by himself. Left to Right CJ Armenta, Bill Qian, Gavin Kirchmer, and Raam Raghunathan (all finished with 3 points) Brian did not play

Below is a link to look at **pictures** I took at the 2015 New Year Bash. When I finish analyzing games I will add games to the end of newsletter and make this the 2015 Winter Plains Chess.

<https://picasaweb.google.com/108586918080555793271/2015NewYearBash?authkey=Gv1sRgCLWmgt3rtdOPmgE#>

There was a **February 2015 ICCC** tourney February 7th. 14 players participated. The event was won by Sam Un with a perfect score of 4.0 out of a possible 4. Matthew Maurer and Veronika Vancsa finished tie for second with 3.0 points. I have one game from that event in the games section at the end of this bulletin.

http://main.uschess.org/assets/msa_joomla/XtblMain.php?201502076492

UPCOMING TOURNAMENTS

There is a nearby Missouri tourney to be held April 11th- **Heart of America Spring Class-**

<http://www.kansaschess.org/htdocs/2015HeartofAmericaSpringClassFlier.pdf>

And, there is a nearby **ICCC tourney** to be held April 25th.

<http://www.kansaschess.org/htdocs/2015ICCCAprilFlier.pdf>

Make plans now to play in the **2015 KANSAS OPEN**. It is **July 17th to 19th** at the same location as the 2013 event in Wichita. Link to location below.

<http://www.holidayinn.com/hotels/us/en/wichita/ictks/hoteldetail/directions>

OTHER NEWS-----

CONRAD HOLT

Our Grandmaster from Kansas has been in the news this year (Kansas Chess Champion in 2011 and 2013). He finished tied for first place in the **World Open** in July with Ilya Smirin and Illya Nyzhnyk. All three tied with a score of 7 and 2. All earned \$9,891. Only the top two on tiebreaks qualified for a playoff to play for 1st place leaving Conrad out. Ilya Smirin won the playoff with Illya Nyzhnyk.

<http://www.uschess.org/content/view/12715/141/>

Then, Conrad Holt won the **US Open** July 26th to 3rd in Orlando, Florida. Actually, there was a 6 way tie at 7.5 points out of 9 possible. This time Conrad finished on top on the tiebreaks and played Michael Mulyar from Colorado in a playoff. He won becoming the new US Open Champion. <http://www.uschess.org/content/view/12752/772/>

At this link there is a nice video of the playoff game, Conrad having 5 minutes with white and Mulyar getting 3 minutes with black. Because of his victory in the US Open Conrad qualifies to play in the 2015 US Championship that starts the end of March.



Grandmaster Conrad Holt

K-12 National Championships- Jack Easton

Jack Richard Easton scored big at the K-12 Nationals in Orlando December 12th to 14th. In the 8th grade section he scored 6.5 points out of 7 possible to finish by himself at that score. There were 113 in his section. (Time control was game in 90 with 5 second delay). For his

effort his rating will go up to 2045 with the next rating period making him a new Kansas Chess playing expert. Hopefully, he can play in the Kansas Open in July and compete to be our 2015 Kansas Champion.
http://www.uschess.org/assets/msa_joomla/XtblMain.php?201412147542.5-13242201

STATE SCHOLASTIC TOURNAMENT- Wichita, KS March 14th, 2015 (NEW)

The state scholastic events were held recently. Participation was remarkable. There were 4 sections: K-3, K-5, K-8, and K-12. Total number of participants in each section

K-3 90 participants

K-5 110 participants

K-8 166 participants

K-12 137 participants

TOTAL- 503 participants

All winners in each section finished with perfect scores of 6 wins in 6 games. Steven Duan finished first in the K-3, Joshua Rubel and Ethan Bui finished tied in K-5, Joey Kelly won K-8, and Kuastabh Nimkar finished first in K-12.

Significant about results, the winner of the K-8 (Joey Kelly) is the Barber representative and the K-12 is the Denker representative (Kaustabh Nimkar). They can represent Kansas at the US Open this August. KCA makes some funding to help these participants. The all-girls tourney participant is to be determined in a separate event.

See full results of scholastic tournaments including team results.
<http://www.ksca.us>

Hopefully some of these scholastic participants can play in the Kansas Open to be held July 17th to 19th.

PATRON/CONTRIBUTOR

Two categories of KCA donations get extra recognition for giving extra money to KCA. Contributors give \$25 for two year membership and Patrons give \$50. David Whitfill, a new patron member, gave \$50 in March. See categories at <http://www.kansaschess.org/htdocs/KCA-MembershipApplication5.pdf>

RENAISSANCE FESTIVAL

The Renaissance Festival has come and gone. It runs seven weekends in the fall, starting Labor Day weekend and running until

Columbus Day weekend. It is the number one fund raiser of the Kansas Chess Association and does quite a bit to promote chess in Kansas. For those unfamiliar with the Renaissance Festival, check out their site <http://www.kcrenfest.com/> There are some fixed expenses we have to deal with before the Renaissance Festival begins. Right up front we have to pay \$180 in Liability Insurance. Then, the city of Bonner Springs taxes the booth \$55 to allow it to operate in Bonner Springs (yes, the Renaissance Festival is within the city limit of Bonner Springs. It is very close to Kansas City, Kansas, but not within that city.) For those that know the area it is not far from the Kansas Speedway and Legends Mall.

I (Laurence Coker) was in charge of the renfest again this year. I have run the booth every year from 2005 until 2014, except for years 2011 and 2012 when Rick Hodges ran it.

This year the booth had a preliminary total income of \$1280 of which \$156 was from donations from our donation boxes. This total is minus a 15% that the Renaissance Festival gets out of all our gross receipts (excluding money in our donation box). Thus, after our expenses are taken out (booth maintenance –new mulch, Bonner Springs Tax, and Liability insurance) this gives us \$1022 made by our booth.

Special thanks are given to all who worked. The Westport Chess Club (Dave Kearns and Raymond Birt) worked two weekends. Joe and Spencer Conklin worked much of the Labor Day weekend, and then Spencer worked two additional days. Kyle Camarda worked a full weekend, as did Duane Johnson, Tom Martin and Tom Moloney. Bob Spies helped out immensely working four individual days. Hyung Ju Nam worked two days. Working one day each were Gabriel and Matthew Maurer, Joey Kelly, Ben Gradsky, CJ Armenta, Sho Glashausser, Bill Quinlan, Abhishek Mallela, Shakti Shimpi, Logan Camarda, Monahar Kyathsandra, and Rick Hodges. Rick drove all the way up from Austin, Texas to work. The day he worked was our biggest money maker of the year. I hope I did not leave off any names out. Oh Yes; I worked four total weekends and one extra day in addition to handling all the scheduling, finances, and booth maintenance.

I have pictures from the renfest at the end of this newsletter. Unfortunately I didn't bring my camera out every weekend and some of the pictures I have were actually sent to me (not taken with my camera).

If interested in working chess booth- 2015 Renfest (starts Labor day- runs seven weekends), Contact me at wlcoker7@hotmail.com

PICTURES FROM RENFEST



Kyle Camarda, Laurence Coker, and Rick Hodges at chess booth



Duane Johnson with visitor to booth



Manohar Kyathsandra, Tom Martin, Laurence Coker, and Shakti Shimpi and child



Sho Glashausser and Hyung Ju Nam

2015 Winter/Spring PLAINS CHESS Bulletin Games

Most of the games I have for the Winter bulletin come from the New Year Bash (January 3rd). I have one game from the Lindsborg Open (December 20th and one game from the recently completed February ICCC tournament. With the New Bash it was rather obvious that many more carbonless score sheets were submitted from the Open section. Reserve section had much fewer score sheets submitted even though it had more players (23 in Reserve vs 16 in the Open). As before some score sheets not used were difficult to read or hard to follow. I had a couple of games in the Open section I had to guess on a couple of moves as the moves were simply left out. Helpful was submission of games from communication by e-mail. Thus, one reason I have three games by Bryan Jiang who finished second in the Open section with 3.5 points. I also have two games submitted by e-mail from Ethan Bui's mother, Ethan winning the Reserve section with 4 points. My one game from the Lindsborg Open was also obtained via e-mail communication. The game I obtained from the February ICCC was from a score sheet I just found left after the fourth round. It was just sitting on the table, abandoned, not picked up after the game (soon to be trash). I looked at it, decided to go over the game later, and found it interesting. Neither in the February ICCC nor the Lindsborg Open were carbonless score sheets submitted.

In the future if you have an interesting game in an event please feel free to e-mail me at wlcoker7@hotmail.com or snail mail me at my address on the contacts list. My address is also listed on the recently posted 2015 Kansas Open flier.

All my analysis is by Fritz 12. Advantages are marked as value of pawns (+1 is the value of the pawn). Usually a piece is + 3 and a rook is +5, but obviously not all advantages are just in terms of material but of positional advantages. For instance, the loss of a pawn in a bishop of opposite color game, such as one listed, may not be the value of a whole pawn. A game with a mating net may have rather large numbers despite only having only a slight material advantage. A passed pawn may be worth quite a bit.

GAMES in Order

New Year Bash- Open Section

- (1) Ron Luther 0- Abhishek Mallela 1
- (2) Bryan Jiang 1- Joey Kelly 0
- (3) Kaustaub Nimkar 1- Sam Un 0
- (4) Kyle Camarda 0- Bryan Jiang 1
- (5) Shams Shaikh 0- Kaustabh Nimkar 1
- (6) Shakti Shimpi 0- Bryan Jiang 1

New Year Bash- Reserve section

- (7) Laurence Coker $\frac{1}{2}$ -Bill Qian $\frac{1}{2}$
- (8) Caroline Jiang 0- C J Armenta 1
- (9) Ethan Bui 1- Peter Doran 0
- (10) Veronika Vanska $\frac{1}{2}$ -Karen Camarda $\frac{1}{2}$
- (11) Gavin Kirchmer 0- Ethan Bui 1
- (12) Dave Kearns $\frac{1}{2}$ - Caroline Jiang $\frac{1}{2}$

Lindsborg Open

- (13) Sho Glashausser 1- Braden Johnson 0

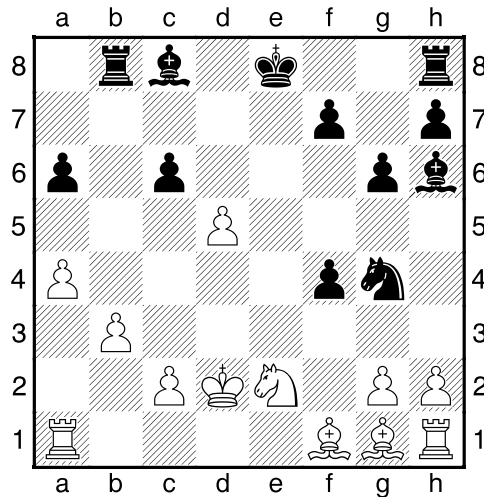
February ICC

- (14) Gabriel Maurer 0- Brycen Parker 1

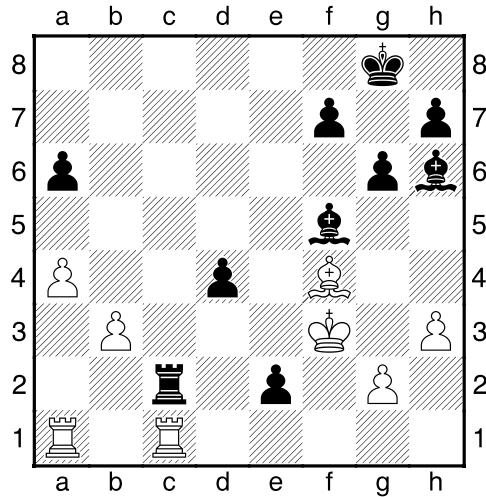
(1) Ron Luther (2216) – Abhishek Mallela (2114) [B93]

2015 New Year Bash (4), 03.01.2015

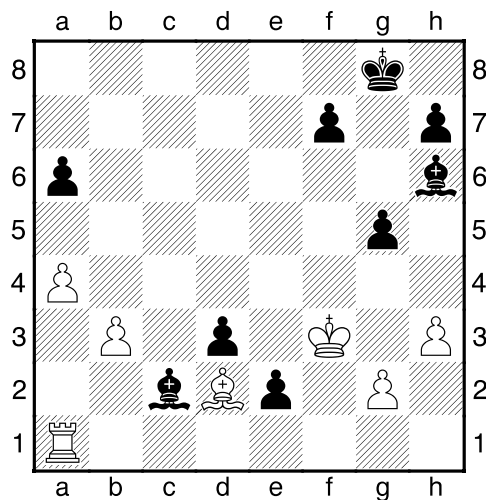
This game decided first place in Open division with Abhishek winning and finishing first. B93 Sicilian Defense **1.e4 c5 2.Nf3 d6 3.d4 Nf6 4.Nc3 cxd4 5.Nxd4 a6 6.f4 g6 7.a4 Nc6 8.Nxc6 bxc6 9.Be3 Qa5= 10.Qd2 Rb8 11.b3 Ng4 12.Bd4?! -+(-1.79) 12...e5 13.Bg1 d5 [13...Bh6 Slightly better] 14.Ne2 Qxd2+ 15.Kxd2 exf4 16.exd5 Bh6**
Diagram



17.Kc3 cxd5 18.Bd4 0-0 19.h3 [19.Kb2 Better for white, though Fritz says black with advantage. -+(-1.69)] 19...Ne3 20.Be5 Bf5 21.Bxb8 [21.Nd4 Slightly better] 21...Rc8+ Better just to take bishop [21...Rxb8 Can play 22....Rc8 next move -+(-3.41)] 22.Kd2 f3 23.Bf4 Nxf1+ 24.Rhxf1 Rxc2+ 25.Ke3 fxe2 26.Rfc1 d4+ 27.Kf3
Diagram



27...g5?! [27...e1Q 28.Rxe1 Rc3+ 29.Re3 Rxe3+ 30.Bxe3 dxe3 31.b4 Be6 Two bishops and a passed pawn against a rook looks like a winner. 32.Ke4 Bc4 33.Rg1 e2 34.Kd4 Bb3 35.Re1 Bd1 36.Kd3 Bf8 37.b5 Bxa4 38.Kxe2 Bxb5+ 39.Ke3 a5 -+(-5.94)] **28.Rxc2 Bxc2 29.Bd2 d3** Diagram

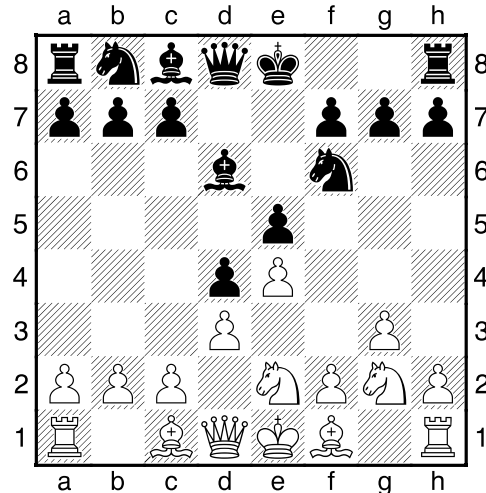


30.b4?? Loses right away. Uncertain if Luther had time troubles at this point. [30.g4 Necessary, though black still has a significant advantage. -+(-2.10)] **30...g4+ 31.hxg4 Bxd2 32.b5 Bd1** Fritz says mate in 12 **0-1**

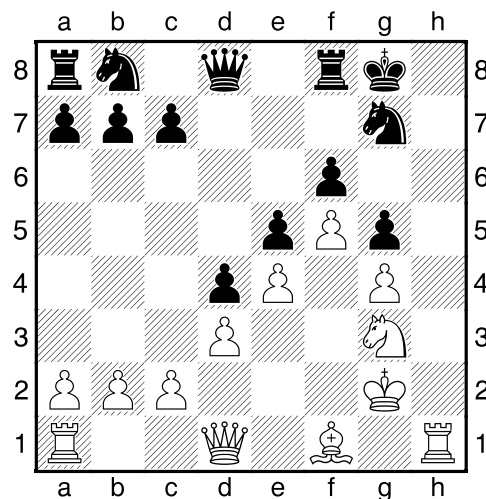
(2) Bryan Jiang (1673) – Joey Kelly (2109) [A00]

2015 New Year Bash (4), 03.01.2015

A00: Irregular Openings 1.Nf3 Nf6 2.Nc3 d5 3.d3 last book move
3...Bf5 4.Nh4 Bc8 5.e4 d4 6.Ne2 e5 7.g3 Bd6 8.Ng2 Diagram

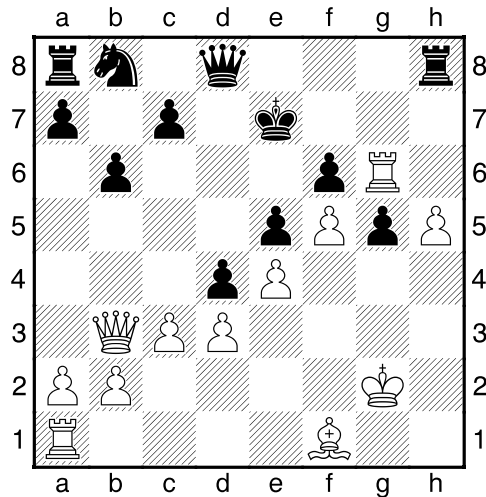


(Odd looking opening. I doubt this has ever happened before) 8...0-0
9.f4 Bg4 10.h3 Bf3 11.Kf2 Bxg2 12.Kxg2 Ne8 13.f5 g6 14.g4 Ng7
15.Ng3 Be7 16.Qd2 g5 17.h4 h6 18.hxg5 Bxg5 19.Qd1 f6?
20.Bxg5 hxg5 Diagram



21.Rh6 [21.c3 Better] 21...Kf7 [21...a5 Better] 22.c3 b6 23.Qb3+ Ke7
[23...Ke8 Better, but still loses] 24.Nh5 Rh8 25.Rg6 [25.Rxh8 Actually
a slightly better as it wins a rook, though is not obvious to quick

analysis. 25...Qxh8 26.Nxg7 Qxg7 27.Qe6+ Kf8 28.Qc8+ Kf7 29.Qb7
 Winning the rook.] **25...Nxh5 26.gxh5** Diagram

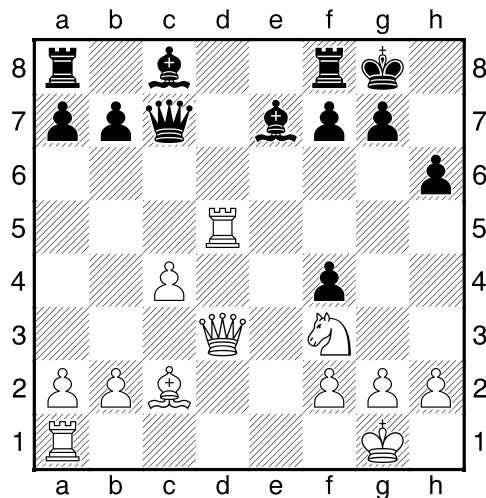


26...Nd7? This loses rather quickly. **27.Rg7+** Mate in one **1-0**

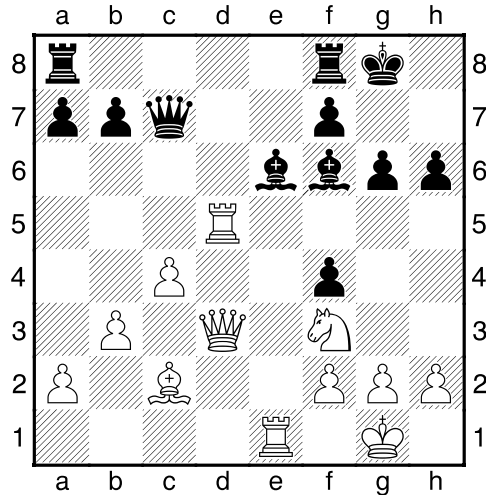
(3) Kaustabh Nimkar (1776) – Sam Un (1768) [D05]

2015 New Year Bash (4), 03.01.2015

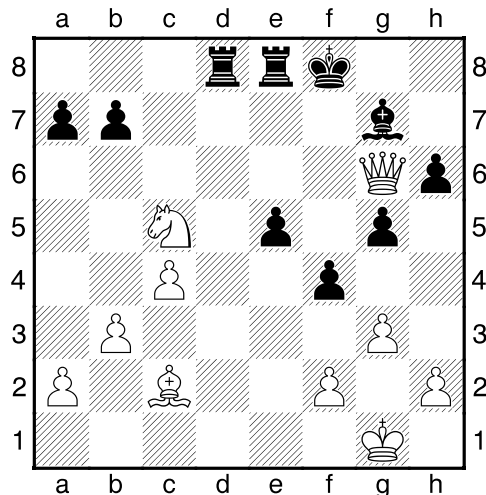
D05: Colle System with ...e6 **1.d4 Nf6 2.Nf3 e6 3.Nbd2 d5 4.e3 Bd6
 5.Bd3 Nbd7 6.0-0 0-0 7.e4 dxe4 8.Nxe4 Nxe4 9.Bxe4 last book
 move 9...h6 10.c4 c5 11.dxc5 Nxc5 12.Bc2 Qc7 13.Qe2 e5 14.Be3
 Ne6 15.Rfd1 Be7 16.Rd5 Nf4 17.Bxf4 exf4 18.Qd3** Diagram



18...g6 This move not recorded on score sheet. In fact no move for black recorded on score sheet by Kaustabh. But, it seems logical and fits with the rest of the moves in the game. Black has to prevent mate on h7 **19.Re1 Bf6 20.b3 Be6?** Diagram



Losing move. [20...Bg4 21.h3 Bxf3 22.Qxf3=; 20...Bf5 ? Does not work 21.Rxf5! gxf5 22.Qxf5 Rfe8 23.Rxe8+ Rxe8 24.Qxf6 +-(4.11)] **21.Rxe6! fxe6 22.Rd7 Qxd7** What else. Otherwise, black gets mated. **23.Qxd7 Rfe8 24.Qd3 g5 25.Qg6+ Bg7 26.g3** [26.Ne5 Better] **26...e5 27.Nd2 Rad8 28.Ne4 Kf8 29.Nc5** Diagram



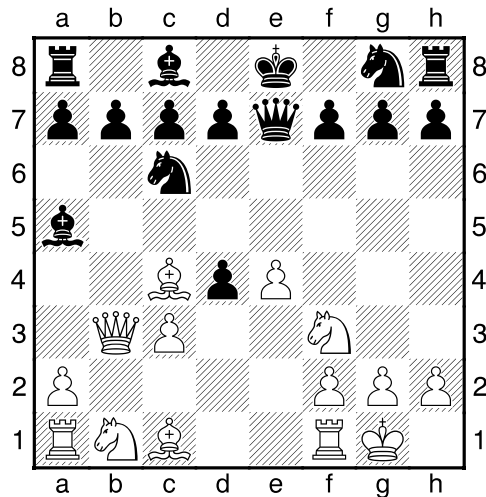
29...b6 This move is not recorded. In fact at this point Kaustabh again records no move at all. So, I am just guessing what black's move is

Whatever the move, 30. Ne6+ follows with the win of the exchange.
30.Ne6+ Rxe6 31.Qxe6 Rd2 32.Qf5+ [32.Bg6 Better Mate in 3]
32...Ke7 33.h3 1-0

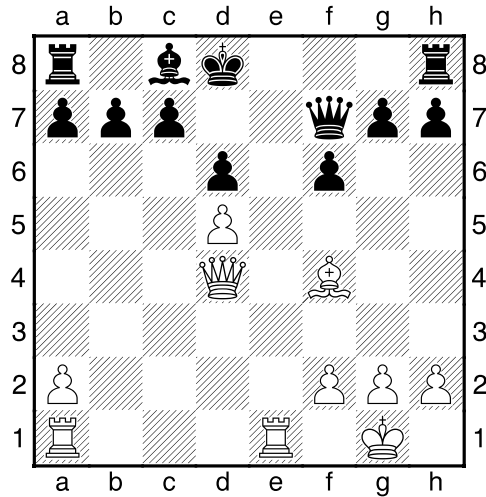
(4) Kyle Camarda (1914) – Bryan Jiang (1673) [C52]

2015 New Year Bash (1), 03.01.2015

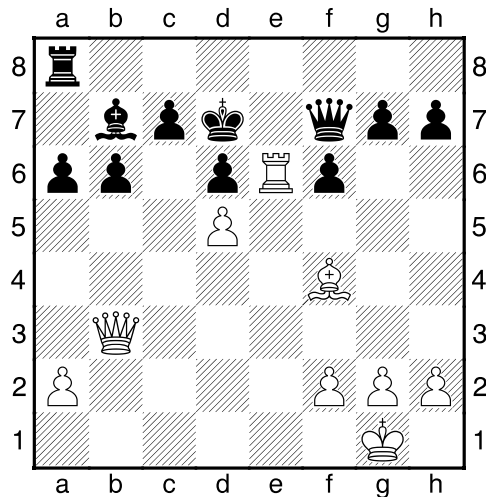
C52: Evans Gambit Accepted: 5 c3 Ba5 One of those old time openings. People still play these. **1.e4 e5 2.Nf3 Nc6 3.Bc4 Bc5 4.b4 Bxb4 5.c3 Ba5 6.d4 exd4 7.Qb3 Qe7 8.0-0** Diagram



last book move **8...Bxc3** Doubt you will find this move in any databases. 8...Bb6 or even 8....Nf6 better **9.Nxc3 dxc3 10.Bg5 Qf8 11.Qxc3 f6 12.Bf4 d6 13.Bd5 Nge7= 14.Nd4 Nxd5 15.exd5 Nxd4 16.Qxd4** Exchange of pieces in this opening is usually good for black. **16...Qf7 17.Rfe1+= Kd8** Diagram



18.Re3 [18.Rac1 Slightly better] **18...Re8** **19.Rae1 Rxe3** **20.Rxe3 b6**
21.Qc4 [21.f3 Better 21...Bb7 22.Re6 Kd7? 23.Qa4+ Kd8 ♞(-0.38)]
21...Bb7 **22.Re6** [22.Rd3 Better, but at this point black is losing -+(-2.24)] **22...a6** **23.Qb3 Kd7** Diagram

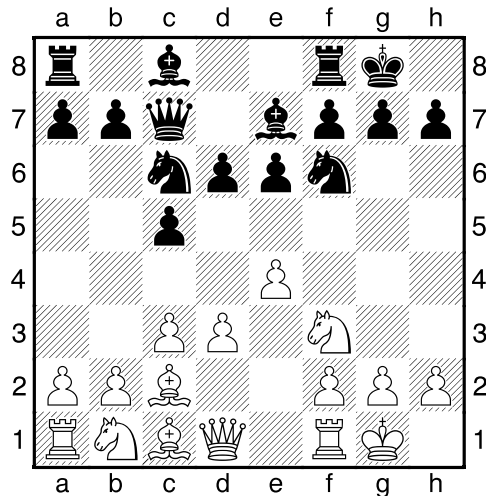


24.Bxd6? This loses rather quickly. It is only good if black plays
24.....cxd6 [24.Qh3 Better, though black is still winning. -+(-2.50)]
24...Bxd5 [24...cxd6? 25.Qxb6 Kc8 26.Qxd6= Qd7 27.Qc5+ Kb8
28.Qf8+ Ka7 29.Qc5+ Perpetual] **25.Qxd5 Qxe6** **26.Qxe6+ Kxe6**
27.Bxc7 b5 **28.Kf1 Rc8** **29.Bf4 Rc2** **30.a3 Rc3** 0-1

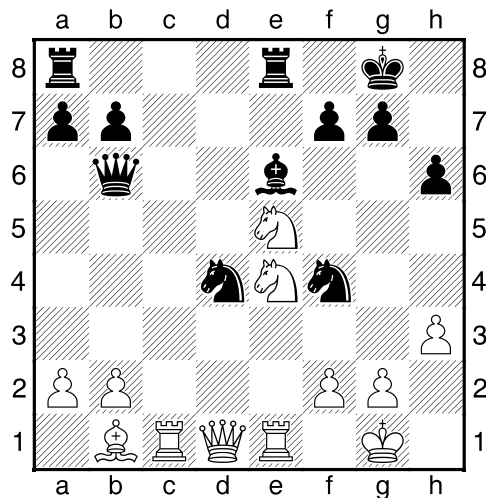
(5) Shams Shaikh (1568) – Kaustabh Nimkar (1776) [B50]

2015 New Year Bash (3), 03.01.2015

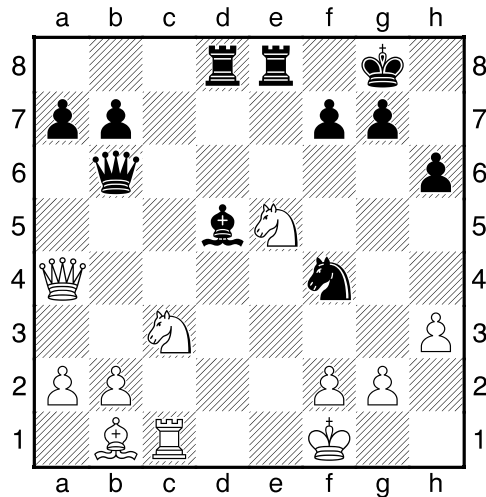
B50: Sicilian: 2...d6, Miscellaneous 1.e4 c5 2.Nf3 d6 3.Bc4 Nf6 4.d3 Nc6 5.c3 e6 6.Bb3 Be7 7.0-0 0-0 last book move 8.Bc2 Qc7 Diagram



9.Re1 This move left out in notation. It is the logical move by the sequence of moves after this, but it is a guess as to what the correct move was. 9...Re8 10.h3 e5 11.Be3 d5 12.exd5 Nxd5 13.Bg5 Bxg5 14.Nxg5 h6 15.Ne4 Nf4 16.Nbd2 Ne7 17.Nf3 Nf5= 18.Rc1 Qb6 19.d4 cxd4 20.cxd4 Be6 21.Nxe5 Nxd4 22.Bb1 Diagram



22...Rad8 Difficult to read this move. Could be 22....Red8, but this move would be less logical. [22...Bxh3 Better 23.Nf3 Nxf2 24.Rf1 Nf5 -+(-3.47)] **23.Qa4?** [23.Nd3 Necessary.] **23...Nde2+ 24.Kf1 Nxc1 25.Rxc1 Bd5** [25...Qxb2 Better. On rook on c1 and knight on e5. Double attack 26.Nf6+ gxf6 27.Qxf4 fxe5 28.Qxh6 Qd2 -+(-8.41)] **26.Nc3** Diagram

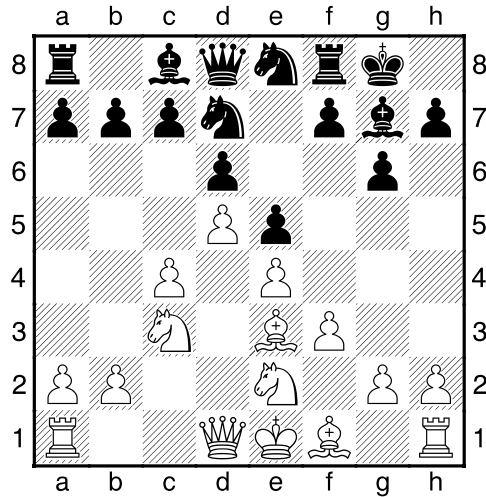


[26.Nd7 Better, but white still losing] **26...Bxg2+** There follows 27. Kg1 Nxf3+ 28. Kh2 Rxe5 29. Qh4 Rg5 etc. **0-1**

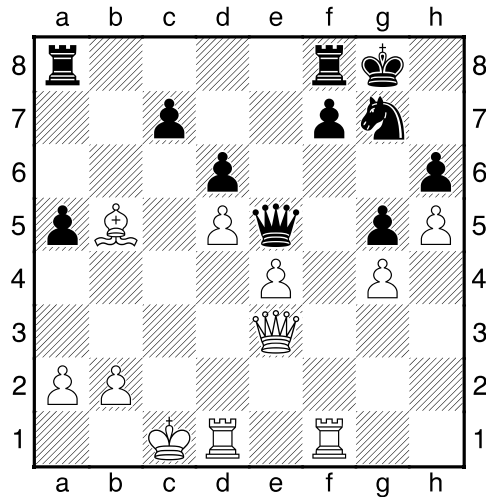
(6) Shakti Shimpi (1909) – Bryan Jiang (1673) [E85] 2015

New Year Bash (3), 03.01.2015

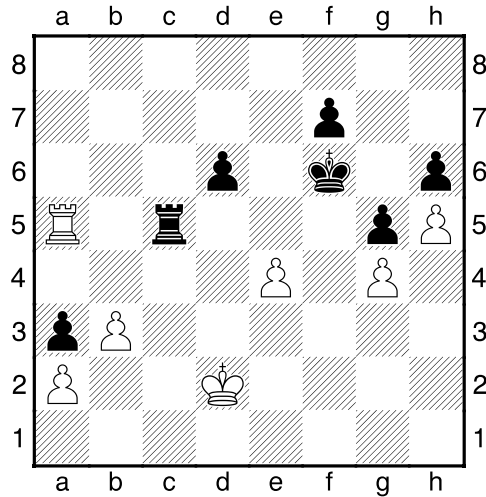
E85: King's Indian: Sämisch: 6...e5 **1.d4 Nf6 2.c4 g6 3.Nc3 Bg7 4.e4 d6 5.f3 0-0 6.Be3 Nbd7 7.Nge2 e5 8.d5 Ne8** Diagram



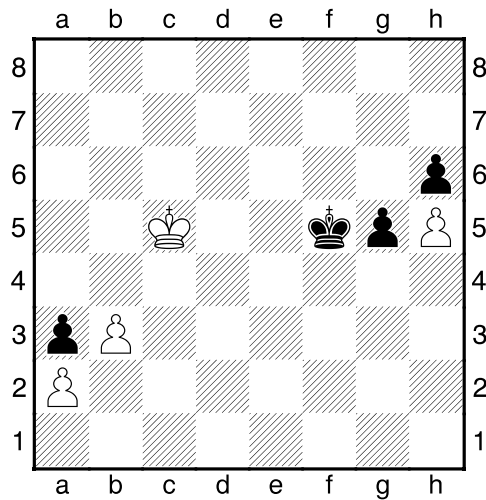
9.g4 last book move 9...Bh6 10.Qd2 Bxe3 11.Qxe3 a5 12.h4 Nc5 13.Ng3 Ng7 14.0-0-0 Bd7 15.h5 Qf6 Looking at 16...Qf4 16.Nce2 b5 17.cxb5 Bxb5 18.f4= Bxe2 19.Nxe2 exf4 20.Nxf4 g5 21.Nd3 Nxd3+ 22.Bxd3 h6 23.Rhf1 Qe5 24.Bb5 Diagram



24...a4?! [24...f5 Better] 25.Qd4 Qxd4 26.Rxd4 a3 27.b3 Ne8 28.Ra4 Rxa4 29.Bxa4 Kg7 30.Bxe8 Rxe8 31.Re1 c6 32.dxc6 Rc8 33.Kd2 Rxc6 34.Rc1 Ra6 White is better here. ±(1.10) 35.Rc4 Kf6 36.Ra4 Rc6 37.Ra5 Rc5 Diagram



38.Rxc5? Now black has advantage $-+(-2.92)$ [38.Rxa3 Better 38...Ke5 39.b4 Rc8 40.Ke3 d5 41.b5 $+-(1.49)$] **38...dxc5 39.Kd3 Ke5 40.Kc4 Kxe4 41.Kxc5 f5 42.gxf5 Kxf5** Diagram

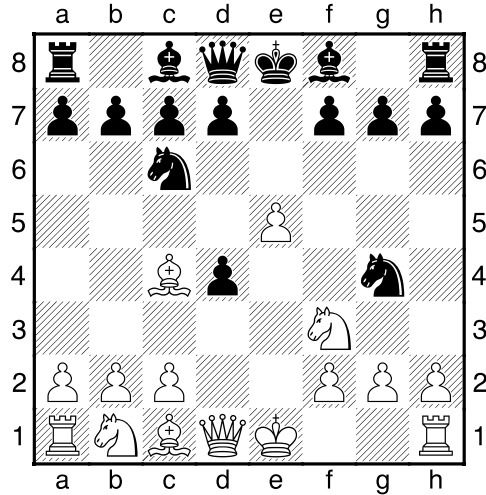


43.b4? 43. Kd4 better, but black is still winning **43...g4 44.b5 g3 45.b6 g2 46.b7 g1Q+ 47.Kc6 Qc1+ 48.Kb6 Qb2+ 49.Ka7 Qd4+ 50.Ka8 Qa4+ 51.Kb8 Ke6 52.Kc8 Qc6+ 53.Kd8 Qd7# 0-1**

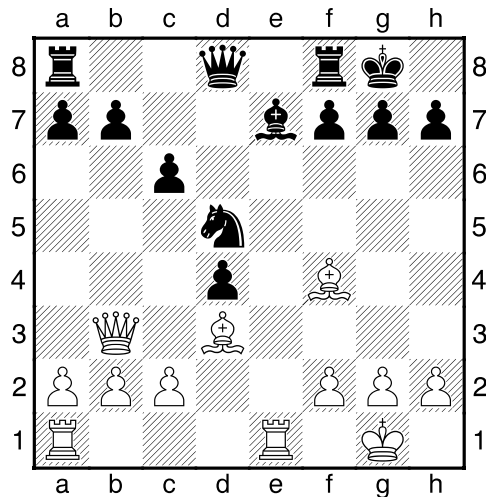
(7) Laurence Coker (1588) – Bill Qian (1539) [C56]

2015 New Year Bash (4), 03.01.2015 (Missed opportunity for white)

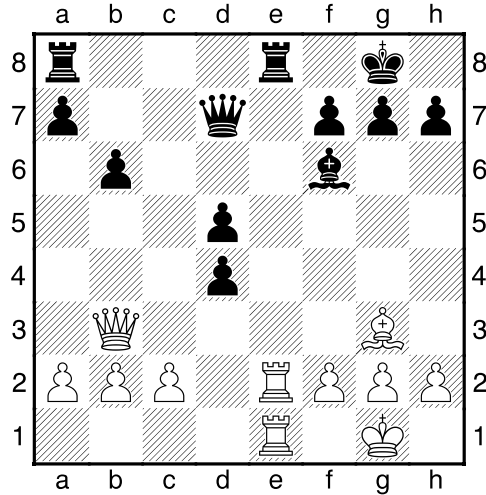
C56: Two Knights: 4 d4 exd4 5 0-0 Nxe4 **1.e4 e5 2.Nf3 Nc6 3.Bc4 Nf6 4.d4 exd4 5.e5 Ng4** Diagram



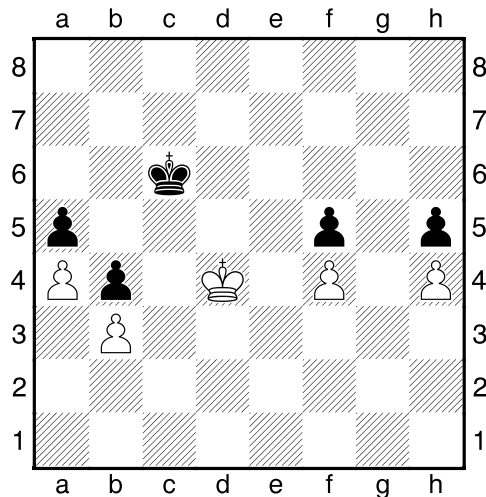
[5...d5 More common 6.Bb5 Ne4 7.Nxd4 Bc5= (7...Bd7=)] **6.0-0**
 [6.Qe2 Roman Dzindzihashvili in his tape on Two Knights says this is better 6...Qe7 7.Bf4 d6 8.exd6 Qxe2+ 9.Bxe2 Bxd6 10.Bxd6 cxd6=]
6...Be7 [6...d6 Best 7.exd6 Bxd6 8.Re1+ Kf8=; 6...Ngxe5? Not this
 7.Nxe5 Nxe5 8.Re1 d6 9.f4 Be7 +-(1.80)] **7.Re1 d6** [7...d5 Not as good]
8.exd6 Qxd6 last book move **9.Nbd2 0-0 10.Ne4 Qd8 11.Bb5 Nge5 12.Bf4 Bg4 13.Ned2 Bxf3 14.Nxf3= Nxf3+ 15.Qxf3 Nb4 16.Qb3 c6 17.Bd3 Nd5** Diagram



18.Bg3 [18.Qxb7 Better 18...Nxf4 19.Rxe7 Rb8 20.Qxa7 Rxb2=]
18...b6 19.Be4 Qd7 20.Bxd5 cxd5 21.Re2 Bf6 22.Rae1 Rfe8??
 Diagram



23.Be5?? [23.Qxd5! Wins on the spot. I didn't even look at this, but it exposes black's weak back rank. It attacks both the queen and the rook on a8 23...Rxe2 (23...d3 24.cxd3 Qa4 25.b3 Rac8 26.Qb7 Bc3 27.bxa4 Bxe1 28.Rxe8+ Rxe8 29.Qxa7 +-(9.42)) 24.Qxa8+ Bd8 25.Rxe2 +-(9.37)] **23...Bxe5 24.Rxe5 Re6 25.Kf1 Rae8 26.R5e2 Qd6 27.Qb5 Rf8 28.g3 Qc6 29.Qd3 Rxe2 30.Rxe2 Qc4 31.Rd2 Rd8 32.b3 Qxd3+ 33.Rxd3 Kf8 34.Rxd4 Ke7 35.Ke2 Ke6 36.Kd3 Rc8 37.c3 a5 38.a3 h6 39.c4 dxc4+ 40.Rxc4 Rxc4 41.Kxc4 Kd6 42.Kb5 Kc7 43.f3 f5 44.h3 g5 45.Kc4 Kc6 46.Kd4 Kd6 47.f4 gxf4 48.gxf4 h5 49.h4 b5 50.a4 b4 51.Kc4 Kc6 52.Kd4** Diagram

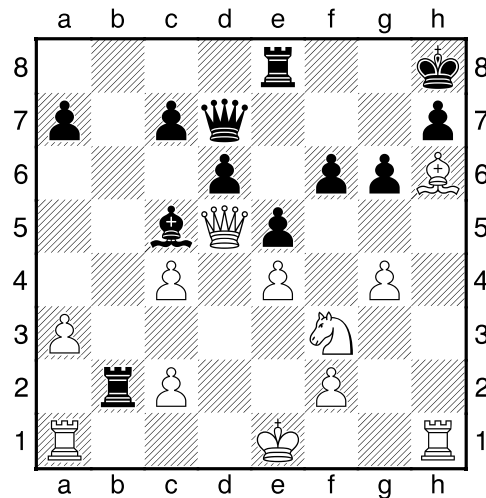


52...Kd6 Draw agreed. I had very little time left on my clock. 1/2-1/2

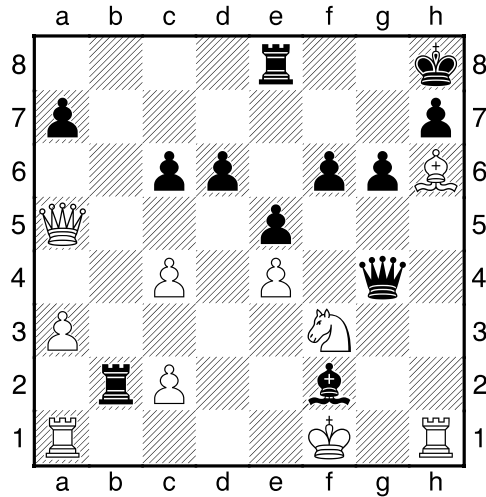
(8) Caroline Jiang (1165) – C J Armenta (1499) [C50]

2015 New Year Bash (3), 03.01.2015

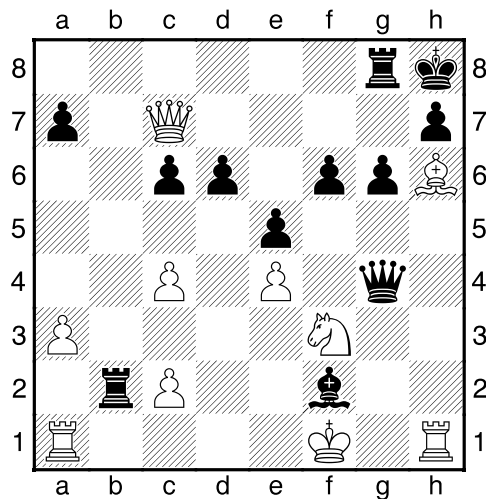
C50: Hungarian Defence and Giuoco Pianissimo (A game with many missed opportunities for both sides. Interesting tactics in game, though.) 1.e4 e5 2.Nf3 Nc6 3.Bc4 Nf6 4.d3 Bc5 5.Nc3 0-0 6.Bg5 last book move 6...d6 7.Nd5 Bg4 8.Nxf6+ gxf6 9.Bh6 Re8 10.h3 Bh5 11.g4 Bg6 12.h4 Na5 13.h5 Nxc4 14.dxc4 Qd7 15.hxg6 fxg6 16.Qd5+ Kh8 17.Qxb7 Rab8 18.Qd5 Rxb2 19.a3 Diagram



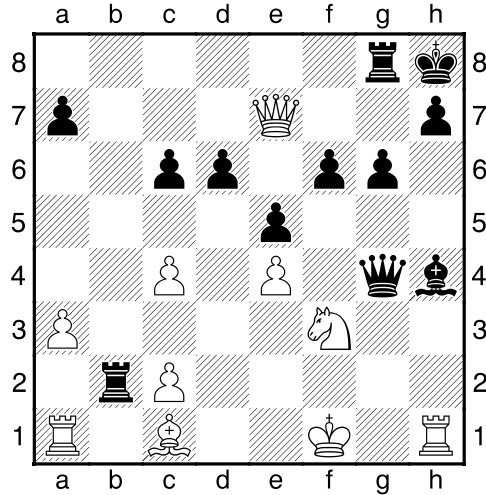
19...Bxf2+? An unsound sacrifice [19...Rxc2= 20.g5 Bxf2+ 21.Kf1 f5 22.Rh2 fxe4 23.Qxe4 Bd4 24.Rxc2 Qh3+ 25.Ke1 Bxa1=] **20.Kf1?** [20.Kxf2 Why not? 20...Rxc2+ 21.Bd2 c6 22.Qd3 Rb2 23.Rab1 Rxb1 24.Rxb1 Kg7 +-(5.95) White is winning] **20...c6= 21.Qa5?** [21.Qd3 Bc5=] **21...Qxg4?** Diagram



Fritz says it is now mate in 8 for white **22.Qc7! Rg8** Diagram



23.Bc1? [23.Bg5! Mate in 4] **23...Rg7?** [23...Bh4 24.Rxh4 Qxf3+ 25.Ke1 Qc3+ 26.Kf1 Qxc4+ 27.Ke1 Qc3+ 28.Kf1 Qf3+ 29.Ke1 Qg3+ 30.Kf1 Qxh4 31.Bxb2 Qh1+ 32.Kf2 Qh2+ 33.Ke1 Qg1+ 34.Kd2 Qf2+ 35.Kd1 Qf1+ 36.Kd2 Qf4+ 37.Kd1 Fritz says black has an advantage here with extra pawns for piece, but white's queen is well placed. -+(-1.95)] **24.Qd8+ Rg8 25.Qe7?** [25.Qxf6+! mate in 3 25...Rg7 26.Qf8+ Rg8 27.Rxh7+ Kxh7 28.Qh6#] **25...Bh4** Diagram



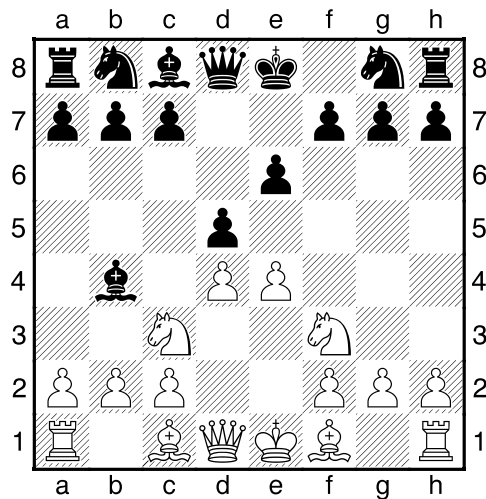
26.Bxb2?? Qxf3+ 27.Kg1 Qf2# 0-1

(9) Ethan Bui (1237) – Peter Doran (1333) [C15]

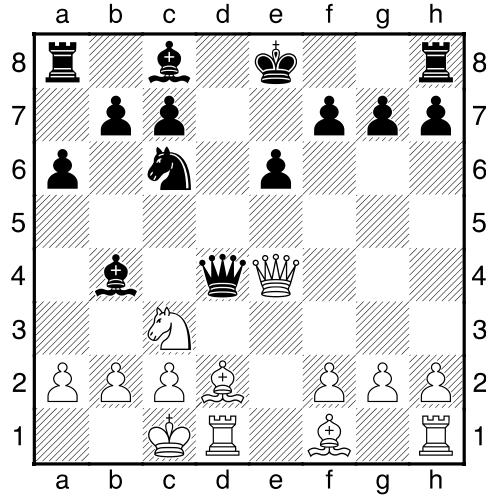
2015 New Year Bash (3), 03.01.2015

C15: French: 3 Nc3 Bb4: Unusual White 4th moves 1.e4 e6 2.d4 d5

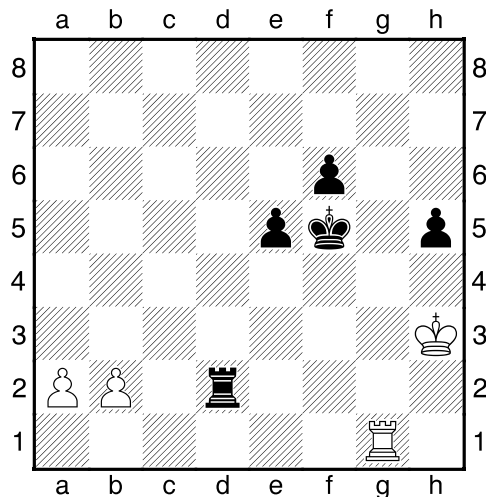
3.Nc3 Bb4 last book move 4.Nf3? Diagram



[4.exd5 Better 4...exd5 ±(0.35); 4.e5 Better ± (0.48)] 4...dxe4 5.Ng5 Nf6 6.Qe2 [6.f3 Better] 6...Qxd4 7.Bd2 Nc6 8.0-0-0 a6 [8...Qe5 Better] 9.Ngxe4 Nxe4 10.Qxe4? Diagram

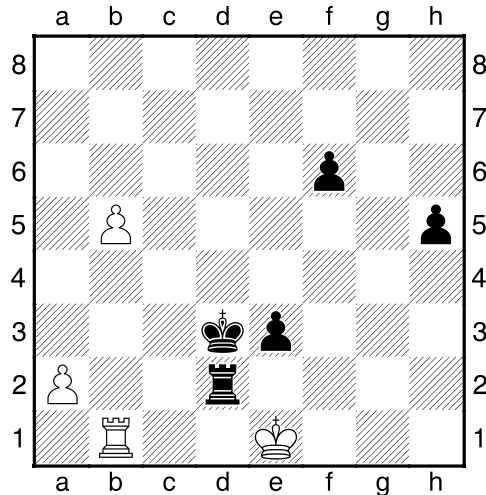


This loses a piece **10...Qxe4?** This does not win the piece [10...Bxc3! 11.Qxd4 Bxd4 -+ (-5.57)] **11.Nxe4 Bxd2+ 12.Rxd2 0-0 13.Bd3 Ne5 14.Re1 Nxd3+ 15.Rxd3 f6= 16.Nc5 e5 17.Red1 b6 18.Ne4 Bf5 19.f3 Rf7 20.g4 Bxe4 21.fxe4 Kf8 22.Rd7 Rxd7 23.Rxd7 Rc8 24.Kd2 h6 25.Ke3 g5 26.Kf3 Kg8 27.Kg3 c5 28.Rd6= Kg7 29.Rxb6 Rd8 30.Rxa6 Rd2 31.Ra7+ Kg6 32.h4 gxh4+ 33.Kxh4 Rxc2 34.Rb7 Rc4 35.Rc7 Rxe4 36.Rxc5 h5 37.Rc3 Rxc4+ 38.Kh3 Rd4 39.Rg3+ Kf5 40.Rg1 Rd2** Diagram



41.Rb1? [41.Rf1+ Drive black king back before moving to Rb1 41...Kg6 42.Rg1+ Kf7 (42...Kh6 43.Rb1 ♣) 43.Rb1 ♣] **41...e4 42.Kg3**

Rd3+ 43.Kf2 e3+ 44.Ke2 Ke4 45.b4 Rd2+ 46.Ke1 Kd3= 47.b5?
Diagram



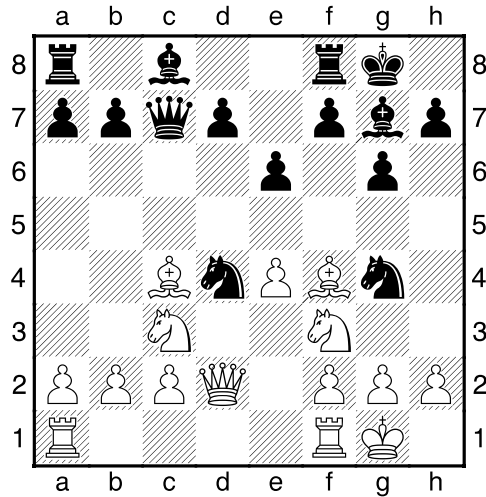
This should lose. But, it is not obvious right away. [47.Rb3+ Kd4 48.b5=] **47...e2??** Throwing win away [47...h4 48.Rb3+ (48.b6 h3 49.Rb3+ Ke4 50.Rb4+ Kf3 51.b7 h2 52.Rh4 Rb2 53.Rh3+ Kg2 54.Rh7 h1Q+ 55.Rxh1 Mate in 21 55...Kxh1) 48...Ke4 49.Rb4+ Kf3 50.Rxh4 Rxa2 51.Rh3+ Ke4 52.Rh7 Rb2 53.Kf1 f5 54.b6 f4 55.b7 Rb1+ 56.Kg2 f3+ 57.Kg3 f2 58.Rf7 Rg1+ 59.Kh2 Rg8 60.Rg7 Rh8+ 61.Kg2 Kd3 62.Rf7 Rg8+ 63.Kh2 Ke2 64.Rg7 Rh8+ 65.Kg3 f1Q Mate in three] **48.b6** [48.Rb3+ Also works 48...Kc2 49.Rb2+ Kxb2 50.Kxd2 Kxa2 51.b6 +- (13.67)] **48...Kc2 49.Rb2+ Kxb2 50.Kxd2 1-0**

(10) Veronika Vanska (1107) – Karen Camarda (1268)

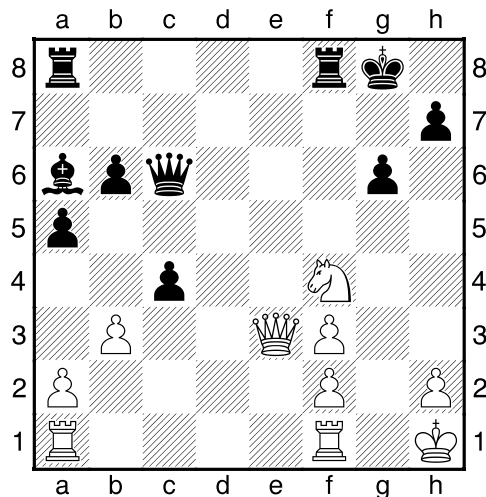
[B35]

2015 New Year Bash (3), 03.01.2015

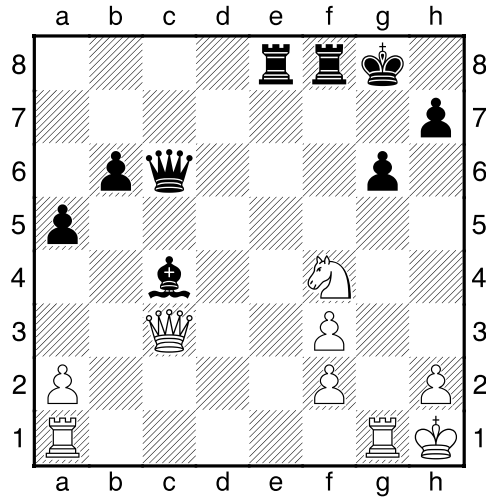
B35: Sicilian: Accelerated Dragon with 5 Nc3: main line **1.e4 c5 2.Nf3 Nc6 3.d4 cxd4 4.Nxd4 Nf6 5.Nc3 g6 6.Bc4 Bg7 7.Be3 0-0 8.0-0** last book move **8...e6 9.Qd2 Ng4 10.Bg5 Qc7 11.Nf3 Nd4! 12.Bf4**
Diagram



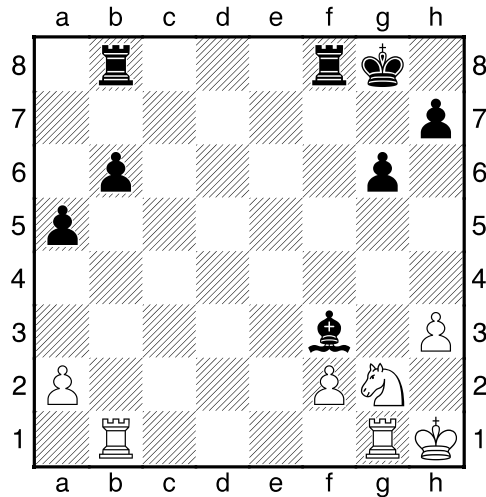
12...Nxf3+? [12...Qxc4 Black wins a piece 13.Nxd4 (13.b3 Doesn't work 13...Qxc3 14.Qxc3 Ne2+ 15.Kh1 Nxc3 Black is now up two pieces. $-+(-9.62)$) 13...Qxd4 14.Qxd4 Bxd4 $-+(-3.47)$] **13.gxf3 Ne5=** [13...Nxb2! 14.Kxb2 (14.Bxc7? Loses a piece 14...Nxf3+! 15.Kg2 Nxd2 $-+(-3.87)$) 14...Qxc4 $\mp(-1.14)$] **14.Be2 Qb6 15.Na4 Qc6 16.Nc3 b6 17.Bh6 Nc4 18.Bxc4 Qxc4 19.Bxg7 Kxg7= 20.b3 Qc6 21.Kh1 f5 22.Qe3 f4 23.Qd3 a5 24.Ne2 Ba6 25.c4 d5 26.exd5 exd5 27.Qd4+ Kg8 28.Nxf4 dxc4 29.Qe3?** Diagram



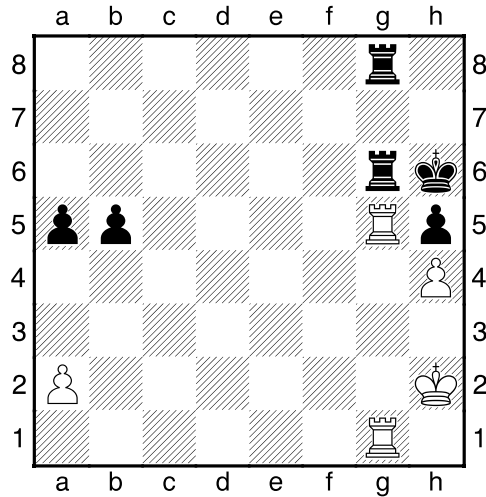
Loses at least the exchange **29...cxb3?** [29...Rae8 30.Qd4 cxb3 31.axb3 Bxf1 32.Rxf1 Rd8 33.Qe3 Rfe8 34.Qc1 Qxf3+ 35.Ng2 $-+(-11.80)$] **30.Rg1 Rae8 [30...b2 Better] 31.Qxb3+ Bc4 32.Qc3** Diagram



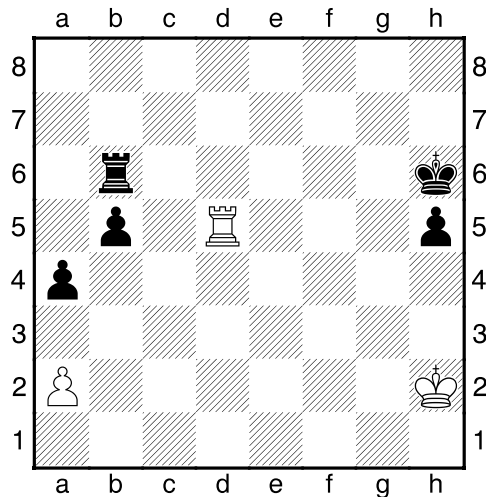
32...Bd5? The knight on f4 is hanging [32...Rxf4! Take the knight]
33.Qxc6 Bxc6 34.Ng2 Bxf3 35.Rab1 Rb8 [35...Re2 Better] **36.h3**
 Diagram



36...Bxg2+ Not a good idea to exchange off black's good bishop for this knight not doing much and is also pinned. And, with pawns on both sides of board, black's bishop is much better than knight. ♣(-1.38) **37.Kxg2 Kg7 38.h4 h5 39.Rb5 Kh6 40.Rg5 Rf6 41.Kh2? Rd8** [41...Rxf2+ 42.Kh3 Rf6 Back to protecting pawn after win of pawn] **42.f4 Rg8 43.f5 b5 44.fxg6 Rfxg6** Diagram



45.Rc1? Simply losing pawn [45.Rxg6+ Rxg6 46.Rf1 Rule of thumb. In rook and pawn ending if down material, don't trade off rooks.]
45...Rxg5 46.hxg5+ Rxg5 47.Rc6+ Rg6 48.Rc5 Rb6 49.Rd5 a4
 Diagram

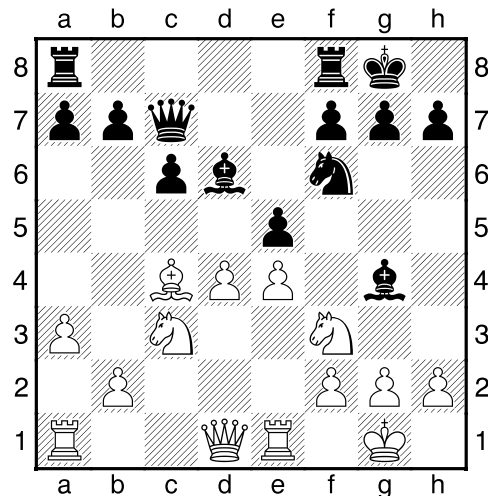


Draw here. Black is winning, two pawns up. She will get passed pawns on both sides of board with correct play. It is possible that black was short of time and white offered a draw and black accepted it. 1/2-1/2

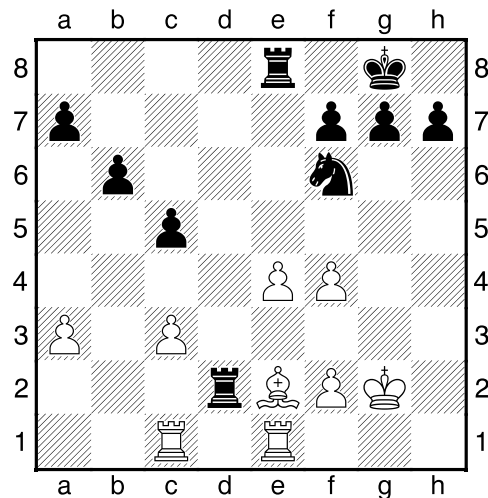
(11) Gavin Kirchmer (1309) – Ethan Bui (1237) [D51]

2015 New Year Bash (4), 03.01.2015 (This game in round 4 won by Ethan decided winner of the Reserve section of New Year Bash)

D51: Queen's Gambit Declined: 4 Bg5 Nbd7 sidelines 1.d4 d5 2.c4 e6 3.Nc3 Nf6 4.Bg5 Nbd7 5.a3 c6 6.e3 last book move 6...Qa5 7.Bd3 dxc4 8.Bxf6 Nxf6 9.Bxc4 Bd6 10.Nf3 0-0 11.0-0 Qc7 12.e4 e5= 13.Re1 Bg4 Diagram



14.Be2? [14.d5 cxd5 15.Bxd5 Rfd8 16.h3 Bh5 17.Rc1 Qb6 18.Rc2 Rac8 19.Qd3=] 14...Bxf3 15.Bxf3 exd4 16.Qxd4 Bxh2+ 17.Kf1 Be5 18.Qd3 Rad8 19.Qe2 Bxc3 20.bxc3 Qh2 21.Qe3 Qe5 22.Rac1 b6 23.g3 Qb5+ 24.Be2 Qe5 25.Bf3 c5 26.Kg2 Rfe8 27.Qf4 Rd3 28.Be2 Qxf4 29.gxf4 Rd2 Diagram

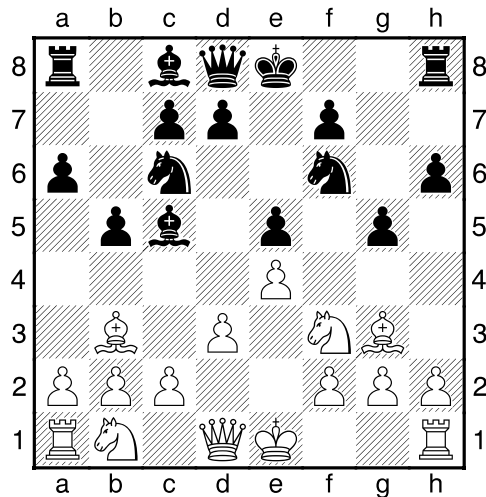


30.Bb5? Probably losing move as white drops second pawn [30.e5 Best 30...Nd5 31.Kf3; 30.Bf3 Ok, but not as good as 30. e5] **30...Rxe4 31.Rxe4 Nxe4 32.Kf3 Nxf2 33.Rf1** [33.Re1 Better, though still losing 33...h5 34.Re7] **33...Nd1 34.Re1 g6 35.c4 Rd4 36.Ba4? Nb2 37.Bb3 Rd3+ 38.Re3 Rd4 39.Bc2 Nxc4 40.f5? Nxe3 0-1**

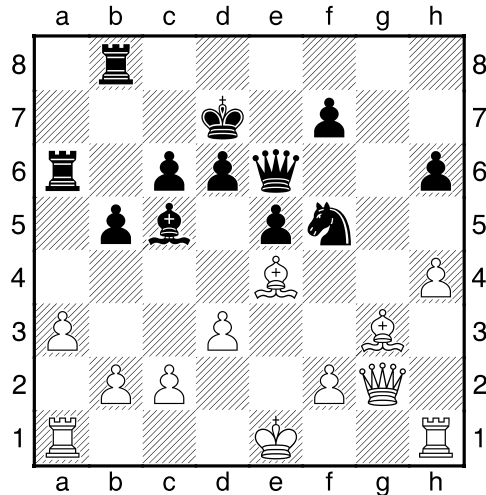
(12) Dave Kearns (1439) – Caroline Jiang (1165) [C77]

2015 New Year Bash (2), 03.01.2015

C77: Ruy Lopez: 3...a6 4 Ba4 Nf6, unusual lines **1.e4 e5 2.Nf3 Nc6 3.Bb5 a6 4.Ba4 b5 5.Bb3 Nf6 6.d3 Bc5** last book move **7.Bg5 h6 8.Bh4 g5 9.Bg3** Diagram



9...d6 10.h3 g4 11.Nh4 gxh3 12.gxh3 Qe7 13.Nc3 Be6 14.Nf5 Bxf5 15.exf5 0-0-0 16.Qf3 Nd4 17.Qa8+ Kd7 18.Qxa6 Ra8 19.Qb7 Rhb8 20.Qg2 Nxf5 21.Nd5 Nxd5 22.Bxd5 Ra6 23.a3 c6 24.Be4 Qe6 25.h4? Diagram

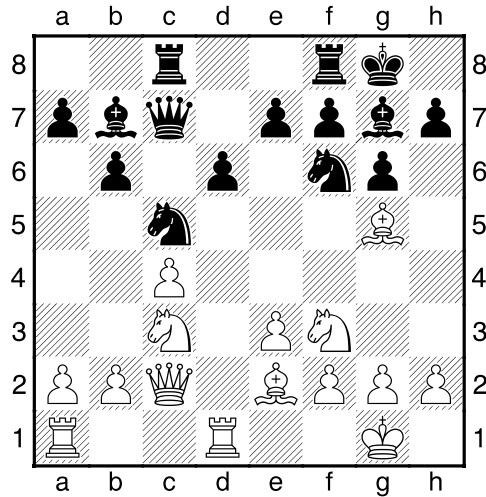


Draw agreed apparently, but h4? is a mistake that drops a piece or the exchange. The analysis by Fritz is complex. 25.c3 would have kept the game equal. It prevents 25...Nd4!. After 25.h4? black plays Nd4! and threatens Nxc2+. Black can ignore it with 26.0-0 or play 26.Kd2 to hold onto pawn, but both lose a piece. There follows 26...f5 after each of these moves. The bishop is forced to f3 where it is attacked by the knight. 27....f4! follows The bishop is forced to move and then comes 28...Rg8 causing all the problems for white. After 26.0-0 the f4 move does not allow Bg3 to move as Rg8 skewers the queen and king. After 26.Kd2 line played and 28...Rg8 is played the queen can't move without dropping the f3 bishop that is attacked by knight on d4. Also, 26.Rc1 doesn't help, but that is more analysis. 1/2-1/2

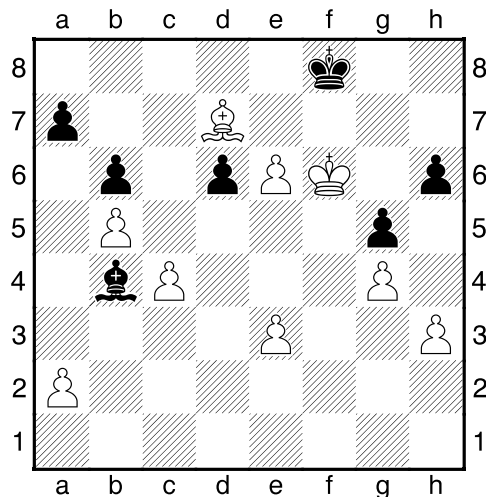
(13) Sho Glashausser (1620) – Braden Johnson (1439) [E61]

2014 Lindsborg Open (2), 20.12.2014 (I have one game from the Lindsborg Open sent to me by Alex Glashausser)

E61: King's Indian: Early deviations for White, including Smyslov System 1.d4 Nf6 2.c4 g6 3.Nc3 Bg7 4.Nf3 0-0 5.Bg5 d6 6.e3 Nbd7 7.Be2 last book move 7...b6 8.0-0 Bb7 9.Qb3 c5 10.dxc5 Nxc5 11.Qc2 Rc8 12.Rfd1 Qc7 Diagram



[12...Nfe4 Slightly better 13.Nxe4 Bxe4 \mp -0.91)] **13.Nb5 Be4 14.Qd2 Qb7 15.Rac1 Bf5 16.Nbd4 Nfe4 17.Qe1 Nxc5 18.Nxc5 Bd7 19.Bf3 Qb8 20.Ne4 Nxe4 21.Bxe4 Rc7 22.b3 Qc8 23.Nb5 Bxb5 24.cxb5 Bb2 25.Rxc7 Qxc7 26.Bc6 Qc8 27.Qd2 Bf6 28.Qb4 Qc7 29.Qg4 Qc8 30.Qxc8 Rxc8 31.f4 Rd8 32.Kf2 h6 33.Rc1 g5 34.g3 Kg7 35.Rc4 Rc8 36.f5 Bb2 37.g4 Be5 38.h3 f6 39.Bd7 Rxc4 40.bxc4 Bc3 41.Ke2 Bb4 42.Kd3 Kf8 43.Ke4 e6?! Apparently, according to Sho's dad both players were having clock problems and moving very fast. 44.fxe6 Ke7 45.Kf5 Kf8? 46.Kxf6 Diagram**

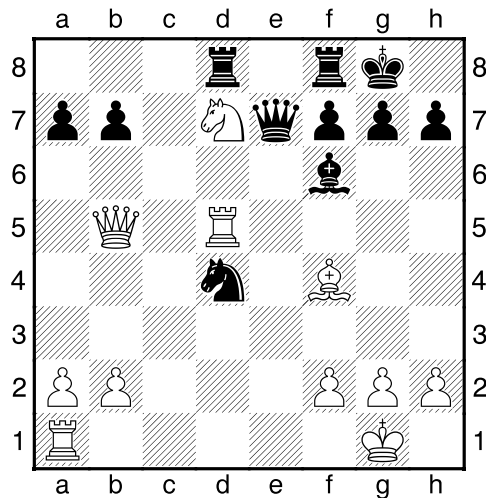


Black resigned here, but all is not lost. With bishops of opposite color, black can hold on for a while and certainly make it difficult for white to win 46...Bc3+ 47. Kg6 Bd2 48. e4 Ke7 49. Kxh6 **1-0**

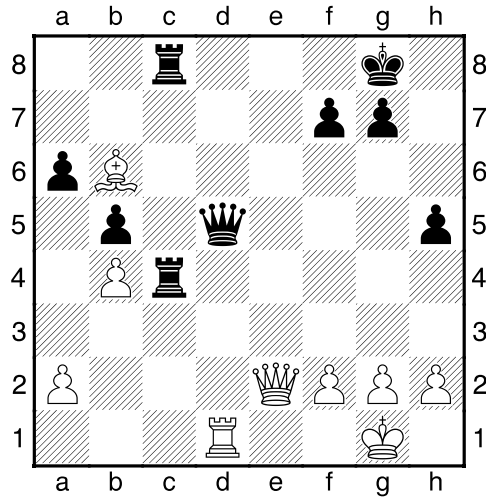
(14) Gabriel Maurer (1418) – Brycen Parker (944) [C67]

2015 February ICCC (4), 07.02.2015 (One game from ICCC February tourney)

C67: Ruy Lopez: Berlin Defence: 4 0-0 Nxe4 1.e4 e5 2.Nf3 Nc6 3.Bb5 Nf6 4.0-0 Nxe4 5.Re1 Nd6 6.Bxc6 dxc6 7.Nxe5 Be7 8.d4 0-0 last book move 9.c3 Be6 10.Qe2 Bd5 11.c4 Be6 12.Nc3 Nf5 13.d5 cxd5 14.cxd5 Bxd5 15.Rd1 c6 16.Nxd5 cxd5 17.Qb5 Bf6 18.Rxd5 Qe7 19.Bf4 Rad8 20.Nd7 Nd4 Diagram



21.Nxf6+? Loses exchange [21.Rxd4 Necessary 21...Bxd4 22.Nxf8 Kxf8 \bar{r} -0.40)] 21...Qxf6 22.Rxd4 Qxd4 23.Be3 Qd5 24.Qa4 a6 25.Qg4 Qe6 26.Qb4 Qd5 27.Qg4 h5 28.Qa4 b5 29.Qc2 Rc8 30.Qe2 Rfd8 31.b4 Rc4 32.Bb6 Rdc8 33.Rd1?? Diagram



Loses very quickly [33.Bc5 Better, though black is still winning]
33...Rc1 0-1

I made the games in this bulletin single column instead of double column. It makes bulletin longer, but I think games are easier for follow. Tell me what you think when you get a chance. Do you like single column games or double column games? (Laurence Coker)

TRIVIA– for those that like those things: List of past Kansas Chess Association Presidents

PAST KCA PRESIDENTS

1984-1985- Kim Jones
1985-1986- Kim Jones
1986-1987- Bob Larson
1987-1988- David Gaida
1988-1989- Leroy Bell
1989-1990- Leroy Bell
1990-1991- Alan Piper
1991-1992- Ralph Bowman
1992-1993- Ralph Bowman
1993-1994- Ralph Bowman
1994-1995- Rick Hodges
1995- Bill Graziano
1996-1997- Rick Hodges
1997- Rick Hodges
1997-1998- Sandy Bath
1998-1999- Neil Andrews
1999-2000- Neil Andrews
2000-2001- Duane Johnson
2001-2002- Duane Johnson
2002-2003- Neil Andrews
2003-2004- Laurence Coker
2004-2005- Laurence Coker
2005-2006- Laurence Coker
2006-2007- Tom Claman
2007-2008- Ron Pasik
2008-2009- Ron Pasik
2009-2010- Tom Brownscombe
2010-2011- Tom Brownscombe
2011-2012- Brian Yang
2012-2013- Rick Hodges
2013-present- Brian Yang

THE END