

2015 Fall

**PLAINS**

**CHESS**

# Table of Contents

1. Kansas Open Report    pages 3-8
2. Kansas Open Cross Tables    pages 9-14
3. Kansas Open Games    pages 15-57

Editor- Laurence Coker

# 2015 Kansas Open report

The **2015 Kansas Open** was held at the Holiday Inn east in Wichita, Kansas July 17 to 19. There were several events. On Friday there was the Bughouse event and the Blitz tourney. On Saturday and Sunday there was the main event consisting of three sections this year instead of the two sections in the past. There was the Open section, Reserve section (open to rated under 1800) and the Amateur section (open to those rated under 1400).

On Friday the first event was the **Bughouse event** at 4 pm. There were 8 teams of two players. They played four rounds each team playing two games against each opponent team. The team of Tony Dutiel and Ben Gradsky finished in first place winning all of the 8 games they played. There was a tie for second from the Abinav Suresh-Joshua Fernandes team and the Lillian Brown-William Brown team with 5 wins each.



Bughouse winners Tony Dutiel and Ben Gradsky

The **Blitz event** was held later after the Bughouse. There were 27 participants. Ben Gradsky won the event with a perfect record, 5 wins in 5 games. Tie for second with four points were Tom Braunlich and Raam Raghunathan. Then, there was a four way tie for fourth with

3.5 points for Jack Easton, Jack Woehr, Joshua Fernandes, and Marshal Lusk.

Most of the players were from Kansas. There were two Nebraska players and one player from Missouri, Texas, Oklahoma, Arizona, and Colorado.



Blitz winner Ben Gradsky with Brian Yang (tourney director)

The **main events** were the **Open, Reserve and Amateur sections**. These events were held on Saturday and Sunday. The Amateur section was new this year added mainly because the Reserve section in past several years has been rather large.

The **Open section** had 29 participants: eight from Oklahoma, two from Nebraska, two from Colorado, and two from Missouri. All the other players were from Kansas.

Ben Gradsky finished first by himself with 4.5 points. As he was also the highest finishing Kansas player, he is also our new Kansas State Champion. Finishing in second by himself with 4.0 points was Oklahoma player James Long. Then, there was a four way tie for third place at 3.5 points by Jack Easton, Chuck Johnson, David Scott, and Jim Berry. Jim Berry won the under 1900 prize.



New Kansas Chess Champion Ben Gradsky with Brian Yang  
First place in Open section



Jim Berry was top U1900 in Open section and James Long was  
second place in Open section (both from Oklahoma)

There were 27 in the **Reserve section** (U1800). There ended up a two way tie in the section between Brian Duke of Oklahoma and Bill Qian of Kansas at 4.0 points. As Bill is the highest rated Kansas player, he is our new Kansas Reserve section champion. There was a six way tie for third place between Jesse Erb, George Verhage, Shams Shaikh, John Tyler Madsen, Gabriel Maurer, and myself- Laurence Coker. Laurence Coker and Gabriel Maurer tied for the U1600 prize. All these

players are from Kansas except John Tyler Madsen, who is from Arkansas. There were two scholastic plaques given, one to first place Brycen Parker and one to second place Veronicka Vanska. They both scored 3.0 points. Places were determined by tiebreaks.



New Kansas Reserve section winner Bill Qian with Brian Yang

The **Amateur section** (U1400) had an interesting result. Players had the choice of playing for playing for scholastic plaques or cash awards. Finishing in first place all by himself with 5.0 points was Rajin Nagpal. But, he was not competing for cash awards, so he just won the first place scholastic award in the section. Adam Weller from Kansas and Jim Huang from Oklahoma tied for second with 4.5 points. Once again there was a scholastic player not playing for cash prizes: Jim Huang won the second place scholastic award. Thus, Adam Weller who scored with 4.5 points is our new Kansas Amateur section champion. Edward Nathan Perry, who actually was fourth overall at 4.0 points, won the second place money prize for the section. The under 1200 prize was shared by Arizona player, Lauren Epard and Kansas player Kyle Boyd, who were both playing for money prizes. Both finished tied at 3.0 points.



First place Amateur Scholastic player Rajin Nagpal and Brian Yang



Kansas Amateur section winner Adam Weller and Brian Yang

It should be noted **Ben Gradsky** had a great tourney. He won the Blitz tourney, the Open section to become our new 2015 Kansas Chess Champion, and he was on the winning Bughouse team having played this event with teammate Tony Dutiel from Nebraska. He wanted to dedicate his achievement to his grandparents Kenneth and Norma Yhap (both recently deceased) and Bea Ballard.



The Playing Hall (I heard no complaints about noise or lighting)- 99 players- Event to return here in 2017



Bill Qian and Brian Duke playing in the last round- Game ended in a draw and they tied for first place. As Bill was from Kansas and Brian from Oklahoma, Bill was awarded Kansas Reserve champion.

BELOW IS GOOGLE LINK TO ALL THE PICTURES I TOOK AT 2015 KANSAS OPEN (Laurence Coker)

<https://picasaweb.google.com/108586918080555793271/2015KansasOpen?authkey=Gv1sRgCKaX0fPfsajJ0gE>



# CROSS TABLES

## 2015 Kansas Open Blitz Championship- July 17, 2015 – Wichita, KS

Pair Num	Player Name USCF ID / Rtg (Pre->Post)	Total Pts	Round 1	Round 2	Round 3	Round 4	Round 5
<a href="#">1</a> KS	<a href="#">BENJAMIN GRADSKY</a> 12717265 / B: 2168P22->2209	5.0	W 17	W 10	W 8	W 2	W 4
<a href="#">2</a> OK	<a href="#">THOMAS D BRAUNLICH</a> 10386161 / B: 2212P20->2209P25	4.0	W 3	W 7	W 13	L 1	W 9
<a href="#">3</a> TX	<a href="#">RAAM NARAYANAN RAGHUNATHAN</a> 15612775 / B: 1570P6 ->1768P11	4.0	L 2	W 23	W 16	W 10	W 13
<a href="#">4</a> CO	<a href="#">JACK J WOHR</a> 11350330 / B: 1945P10->1950P15	3.5	W 22	D 14	W 11	W 5	L 1
<a href="#">5</a> KS	<a href="#">JACK RICHARD EASTON</a> 14510393 / B: 1899 ->1897	3.5	W 12	W 15	W 9	L 4	D 7
<a href="#">6</a> KS	<a href="#">JOSHUA JUDE FERNANDES</a> 14355803 / B: 1694 ->1688	3.5	L 19	W 20	W 24	D 13	W 14
<a href="#">7</a> KS	<a href="#">MARSHAL GUY LUSK</a> 15180556 / B: 1473P10->1641P15	3.5	W 26	L 2	W 18	W 8	D 5
<a href="#">8</a> KS	<a href="#">KYLE CAMARDA</a> 12399769 / B: 1993P18->1958P23	3.0	W 20	W 27	L 1	L 7	W 16
<a href="#">9</a> NE	<a href="#">TONY DUTIEL</a> 12602486 / B: 1916 ->1903	3.0	W 23	W 19	L 5	W 15	L 2
<a href="#">10</a> NE	<a href="#">ABHINAV SURESH</a> 14319361 / B: 1842 ->1829	3.0	W 24	L 1	W 14	L 3	W 18
<a href="#">11</a> KS	<a href="#">KIM J JONES</a> 10371295 / B: 1778P15->1744P20	3.0	L 14	W 22	L 4	W 23	W 17
<a href="#">12</a> KS	<a href="#">WILLIAM BROWN</a> 14462201 / B: 1370P20->1408P25	3.0	L 5	L 18	W 22	W 26	W 15
<a href="#">13</a> KS	<a href="#">JASON WAWRZASZEK</a> 12685755 / B: 1955P20->1919P25	2.5	W 21	W 16	L 2	D 6	L 3
<a href="#">14</a> KS	<a href="#">JOSE SMOKOWSKI</a> 13746293 / B: 1324P10->1484P15	2.5	W 11	D 4	L 10	W 21	L 6
<a href="#">15</a> KS	<a href="#">SHAMS SHAIKH</a> 12606219 / B: 1624P10->1579P15	2.0	W 18	L 5	W 26	L 9	L 12
<a href="#">16</a> KS	<a href="#">BILL NINGYUAN QIAN</a> 15206304 / B: 1579 ->1566	2.0	W 25	L 13	L 3	W 24	L 8
<a href="#">17</a> MO	<a href="#">CJ ARMENTA</a> 12650738 / B: 1520P16->1489P21	2.0	L 1	L 24	W 27	W 19	L 11
<a href="#">18</a> KS	<a href="#">EDWARD NATHAN PERRY</a> 15767731 / B: Unrated->1474P5	2.0	L 15	W 12	L 7	W 20	L 10
<a href="#">19</a> KS	<a href="#">MICHAEL ALLAN SCHOENHOFER</a> 15717826 / B: Unrated->1372P5	2.0	W 6	L 9	L 21	L 17	W 26
<a href="#">20</a> AZ	<a href="#">DAX WESLEY EPARD</a> 15178954 / B: 1353P10->1355P15	2.0	L 8	L 6	W 25	L 18	W 21

<a href="#">21</a>	<a href="#">RITA MARY JOSEPH</a>	2.0	L	13 W	25 W	19 L	14 L	20
KS	14982768 / B: 1365P16->1354P21							
<a href="#">22</a>	<a href="#">BRIAN P JANUS</a>	2.0	L	4 L	11 L	12 B	W	25
KS	12536697 / B: 1373P10->1343P14							
<a href="#">23</a>	<a href="#">DR TODD WILLIAM EASTON</a>	2.0	L	9 L	3 B	L	11 W	27
KS	15190835 / B: 1196P10->1192P14							
<a href="#">24</a>	<a href="#">ADAM WELLER</a>	2.0	L	10 W	17 L	6 L	16 B	
KS	12731906 / B: 1092P15->1147P19							
<a href="#">25</a>	<a href="#">IAN DOUDOU YANG</a>	1.0	L	16 L	21 L	20 W	27 L	22
KS	15401758 / B: Unrated-> 909P5							
<a href="#">26</a>	<a href="#">KOLBE JAMES ENGEL</a>	1.0	L	7 B	L	15 L	12 L	19
KS	15689796 / B: 649P6 -> 649P10							
<a href="#">27</a>	<a href="#">JAKE WILLIAM JANUS</a>	1.0	B	L	8 L	17 L	25 L	23
KS	15715217 / B: 524P8 -> 524P12							

## 2015 Kansas Open- July 18 - 19, 2015- Wichita Kansas Open Section

Pair Num	Player Name USCF ID / Rtg (Pre->Post)	Total Pts	Round 1	Round 2	Round 3	Round 4	Round 5	
<a href="#">1</a>	<a href="#">BENJAMIN GRADSKY</a> KS   12717265 / R: 2135 ->2155	4.5	W	26 W	14 D	2 W	4 W	5
<a href="#">2</a>	<a href="#">JAMES LONG</a> OK   12374730 / R: 2034 ->2059	4.0	W	11 W	10 D	1 W	6 D	3
<a href="#">3</a>	<a href="#">JACK RICHARD EASTON</a> KS   14510393 / R: 2125 ->2121	3.5	W	15 D	5 D	8 W	22 D	2
<a href="#">4</a>	<a href="#">CHUCK JOHNSON</a> OK   12948398 / R: 2069 ->2079	3.5	W	19 W	13 H	L	1 W	8
<a href="#">5</a>	<a href="#">DAVID W SCOTT</a> MO   12428134 / R: 2026 ->2048	3.5	W	16 D	3 W	17 W	12 L	1
<a href="#">6</a>	<a href="#">JIM BERRY</a> OK   10384885 / R: 1865 ->1897	3.5	W	28 W	7 H	L	2 W	15
<a href="#">7</a>	<a href="#">JASON WAWRZASZEK</a> KS   12685755 / R: 2038 ->2024	3.0	W	27 L	6 W	13 L	8 W	18
<a href="#">8</a>	<a href="#">KYLE CAMARDA</a> KS   12399769 / R: 1983 ->1993	3.0	D	17 W	24 D	3 W	7 L	4
<a href="#">9</a>	<a href="#">BRADY BARKEMEYER</a> CO   13567727 / R: 1918 ->1904	3.0	L	18 D	16 W	27 D	17 W	19
<a href="#">10</a>	<a href="#">MOHAMMADREZA HAJIARBABI</a> KS   14796427 / R: 1902 ->1891	3.0	W	20 L	2 L	22 W	26 W	21
<a href="#">11</a>	<a href="#">ZACHARY WALLING</a> OK   15301071 / R: 1766 ->1768	3.0	L	2 D	28 H	W	29 W	22
<a href="#">12</a>	<a href="#">THOMAS D BRAUNLICH</a> OK   10386161 / R: 2233 ->2215	2.5	D	25 W	18 W	23 L	5 U	

<a href="#">13</a>	<a href="#">ABHINAV SURESH</a>	2.5	W	21	L	4	L	7	D	20	W	28	
NE	14319361 / R: 1922	->1905											
<a href="#">14</a>	<a href="#">TERRY L WRIGHT</a>	2.5	W	22	L	1	D	18	D	19	D	17	
KS	12345700 / R: 1898	->1879											
<a href="#">15</a>	<a href="#">JUDSON TEMPLE</a>	2.5	L	3	D	20	W	28	W	23	L	6	
OK	10330912 / R: 1800	->1806											
<a href="#">16</a>	<a href="#">HYUNG JU NAM</a>	2.5	L	5	D	9	L	24	W	27	W	23	
KS	14292541 / R: 1779	->1802											
<a href="#">17</a>	<a href="#">KIANA HAJIARBABI</a>	2.5	D	8	W	29	L	5	D	9	D	14	
KS	14796433 / R: 1689	->1741											
<a href="#">18</a>	<a href="#">APRAMAY MISHRA</a>	2.5	W	9	L	12	D	14	X		L	7	
KS	14100400 / R: 1705	->1734											
<a href="#">19</a>	<a href="#">DAVID SAYLER</a>	2.0	L	4	W	21	H		D	14	L	9	
MO	12616509 / R: 1772	->1771											
<a href="#">20</a>	<a href="#">JOSHUA JUDE FERNANDES</a>	2.0	L	10	D	15	D	25	D	13	H		
KS	14355803 / R: 1733	->1739											
<a href="#">21</a>	<a href="#">NICK E SHEARER</a>	2.0	L	13	L	19	B		W	25	L	10	
KS	12418234 / R: 1624	->1628											
<a href="#">22</a>	<a href="#">ISAAC CHRISTOPHER LEE</a>	2.0	L	14	B		W	10	L	3	L	11	
KS	15138832 / R: 1461	->1490											
<a href="#">23</a>	<a href="#">JACK J WOEHR</a>	1.5	D	29	W	25	L	12	L	15	L	16	
CO	11350330 / R: 1945	->1906											
<a href="#">24</a>	<a href="#">VLADIMIR SHIMON IGLESIAS</a>	1.5	H		L	8	W	16	F		U		
KS	12628521 / R: 1869	->1871											
<a href="#">25</a>	<a href="#">TONY DUTIEL</a>	1.5	D	12	L	23	D	20	L	21	D	26	
NE	12602486 / R: 1856	->1826											
<a href="#">26</a>	<a href="#">BRYAN LIU JIANG</a>	1.5	L	1	D	27	D	29	L	10	D	25	
KS	14097248 / R: 1797	->1778											
<a href="#">27</a>	<a href="#">KAUSTUBH SANJAY NIMKAR</a>	1.5	L	7	D	26	L	9	L	16	W	29	
KS	14100882 / R: 1782	->1762											
<a href="#">28</a>	<a href="#">KRISH KUMAR</a>	1.5	L	6	D	11	L	15	B		L	13	
OK	14640364 / R: 1505	->1504											
<a href="#">29</a>	<a href="#">YASH KUMAR</a>	1.0	D	23	L	17	D	26	L	11	L	27	
OK	14640358 / R: 1698	->1671											

## 2015 Kansas Open- July 18 - 19, 2015- Reserve Section

Pair Num	Player Name USCF ID / Rtg (Pre->Post)	Total Pts	Round 1	Round 2	Round 3	Round 4	Round 5					
<a href="#">1</a>	<a href="#">BRIAN DUKE</a> OK   12574567 / R: 1621 ->1689	4.0	H	W	23	W	14	W	3	D	2	
<a href="#">2</a>	<a href="#">BILL NINGYUAN QIAN</a> KS   15206304 / R: 1623 ->1666	4.0	W	10	W	13	W	5	D	6	D	1
<a href="#">3</a>	<a href="#">JESSE L ERE</a> KS   13216383 / R: 1671P14->1666P19	3.5	W	21	W	15	D	6	L	1	W	13
<a href="#">4</a>	<a href="#">GEORGE R VERHAGE JR</a> KS   10368731 / R: 1665 ->1660	3.5	D	7	W	24	L	16	W	22	W	15

<a href="#">5</a>	<a href="#">SHAMS SHAIKH</a>	KS	12606219 / R: 1624	->1628	3.5	X	W	18	L	2	W	10	D	6
<a href="#">6</a>	<a href="#">JOHN TYLER MADSEN</a>	AR	12553344 / R: 1603	->1622	3.5	W	11	W	25	D	3	D	2	D
<a href="#">7</a>	<a href="#">GABRIEL RICHARD MAURER</a>	KS	15024882 / R: 1521	->1546	3.5	D	4	D	8	W	12	D	15	W
<a href="#">8</a>	<a href="#">LAURENCE COKER</a>	KS	12174160 / R: 1524	->1534	3.5	D	24	D	7	W	25	W	16	H
<a href="#">9</a>	<a href="#">WILLIAM BROWN</a>	KS	14462201 / R: 1514	->1568	3.0	W	26	D	14	W	22	H		U
<a href="#">10</a>	<a href="#">STEPHEN MICHEAL SALIMNEJAD</a>	KS	13241035 / R: 1408	->1475	3.0	L	2	W	17	W	18	L	5	W
<a href="#">11</a>	<a href="#">VERONIKA VANCSEA</a>	KS	14967123 / R: 1416	->1430	3.0	L	6	W	21	L	13	W	20	W
<a href="#">12</a>	<a href="#">JOSE SMOKOWSKI</a>	KS	13746293 / R: 1324	->1344	3.0	L	18	B		L	7	W	24	W
<a href="#">13</a>	<a href="#">BRYCEN M PARKER</a>	KS	15141051 / R: 1076	->1229	3.0	B		L	2	W	11	W	14	L
<a href="#">14</a>	<a href="#">DUANE HANKS</a>	KS	12843039 / R: 1696P9	->1624P14	2.5	W	19	D	9	L	1	L	13	W
<a href="#">15</a>	<a href="#">RITA MARY JOSEPH</a>	KS	14982768 / R: 1351	->1421	2.5	W	17	L	3	W	19	D	7	L
<a href="#">16</a>	<a href="#">MATTHEW DUANE WILSON</a>	KS	14468442 / R: 1264P5	->1395P10	2.5	D	27	W	20	W	4	L	8	L
<a href="#">17</a>	<a href="#">KYLE TRAN</a>	KS	15196360 / R: 1541P14	->1460P18	2.0	L	15	L	10	L	21	X		W
<a href="#">18</a>	<a href="#">CJ ARMENTA</a>	MO	12650738 / R: 1474	->1441	2.0	W	12	L	5	L	10	W	26	L
<a href="#">19</a>	<a href="#">ETHAN BUI</a>	KS	15061846 / R: 1450	->1424	2.0	L	14	W	26	L	15	W	23	L
<a href="#">20</a>	<a href="#">ZACK GINGIRCH-GAYLORD</a>	KS	13395375 / R: 1508P5	->1369P10	2.0	L	25	L	16	W	24	L	11	W
<a href="#">21</a>	<a href="#">DUANE J TATE</a>	KS	13100901 /		2.0	L	3	L	11	W	17	W	25	L
<a href="#">22</a>	<a href="#">TOM L PHILLIPS</a>	KS	12411318 / R: 1710	->1700	1.5	D	23	W	27	L	9	L	4	U
<a href="#">23</a>	<a href="#">DON JOHNSON</a>	KS	12599278 / R: 1496P3	->1386P7	1.5	D	22	L	1	X		L	19	L
<a href="#">24</a>	<a href="#">DAX WESLEY EPARD</a>	AZ	15178954 / R: 1353	->1314	1.5	D	8	L	4	L	20	L	12	B
<a href="#">25</a>	<a href="#">RYAN DUAN</a>	KS	14461763 / R: 1219	->1216	1.0	W	20	L	6	L	8	L	21	L
<a href="#">26</a>	<a href="#">CAROLINE LI JIANG</a>	KS	14421840 / R: 1183	->1148	1.0	L	9	L	19	B		L	18	L
<a href="#">27</a>	<a href="#">SAI SATVIK KOLLA</a>	CA	14947361 / R: 1585	->1560	0.5	D	16	L	22	F		F		U

## 2015 Kansas Open- July 18 - 19, 2015- Amateur Section

Pair Num	Player Name USCF ID / Rtg (Pre->Post)	Total Pts	Round 1	Round 2	Round 3	Round 4	Round 5
1	<a href="#">RAJIN NAGPAL</a> KS   15424568 / R: 1135 ->1283	5.0	W 23	W 24	W 12	W 13	W 6
2	<a href="#">ADAM WELLER</a> KS   12731906 / R: 1123 ->1293	4.5	W 27	W 11	D 6	W 8	W 7
3	<a href="#">JIM HUANG</a> OK   15424553 / R: 1081 ->1230	4.5	W 25	W 31	W 5	D 7	W 12
4	<a href="#">EDWARD NATHAN PERRY</a> KS   15767731 / R: Unrated->1207P5	4.0	L 13	W 39	W 31	W 21	W 14
5	<a href="#">BRIAN P JANUS</a> KS   12536697 / R: 1373 ->1345	3.5	B	W 15	L 3	D 9	W 13
6	<a href="#">RILEY D KING</a> KS   15755654 / R: 1237P4 ->1240P9	3.5	W 28	W 16	D 2	W 10	L 1
7	<a href="#">SANJAY RAJJAN</a> NE   15303406 / R: 1216 ->1221	3.5	W 36	W 37	W 9	D 3	L 2
8	<a href="#">MICHAEL ALLAN SCHOENHOFER</a> KS   15717826 / R: Unrated->1177P5	3.5	D 10	W 34	W 22	L 2	W 20
9	<a href="#">KRISHI SABARWAL</a> KS   15761286 / R: 1095P4 ->1146P9	3.5	W 29	W 21	L 7	D 5	W 22
10	<a href="#">CAEL DOUGLAS PROVINCE</a> KS   15586913 / R: 881 ->1010	3.5	D 8	W 26	W 11	L 6	W 23
11	<a href="#">JOE WOHL</a> KS   20049776 / R: 1373 ->1316	3.0	W 30	L 2	L 10	W 33	W 32
12	<a href="#">DARYL R FOUARD</a> KS   12401335 / R: 1349 ->1303	3.0	W 33	W 18	L 1	W 28	L 3
13	<a href="#">SHAHRZAD HAJIARBABI</a> KS   14796448 / R: 953 ->1121	3.0	W 4	W 14	W 20	L 1	L 5
14	<a href="#">ROBERT W MOORE</a> OK   12838658 / R: 1134 ->1110	3.0	W 19	L 13	W 30	W 15	L 4
15	<a href="#">LAUREN ELIZABETH EPARD</a> AZ   15178948 / R: 1032 ->1020	3.0	W 42	L 5	W 26	L 14	W 28
16	<a href="#">LOGAN CAMARDA</a> KS   15093362 / R: 953 -> 941	3.0	W 38	L 6	L 17	W 40	W 27
17	<a href="#">KYLE ADAM BOYD</a> KS   15748051 / R: Unrated-> 918P4	3.0	L 22	W 27	W 16	H	D 19
18	<a href="#">DIANE EMILIE CAMARDA</a> KS   15187942 / R: 962P6 -> 886P11	3.0	W 35	L 12	L 25	W 39	W 30
19	<a href="#">CATHERYNE MARTIN</a> OK   15327418 / R: 103P10-> 293P14	3.0	L 14	W 41	H	W 29	D 17
20	<a href="#">DR TODD WILLIAM EASTON</a> KS   15190835 / R: 1196 ->1127	2.5	W 34	D 22	L 13	W 25	L 8

<a href="#">21</a>	<a href="#">LEROY E ASHER</a>	2.5	W	43	L	9	W	33	L	4	D	26
KS	12537402 / R: 1074 ->1022											
<a href="#">22</a>	<a href="#">JOHN BURGESS ELY</a>	2.5	W	17	D	20	L	8	W	36	L	9
KS	14664266 / R: 737P18-> 825P23											
<a href="#">23</a>	<a href="#">IAN DOUDOU YANG</a>	2.5	L	1	D	29	W	43	W	24	L	10
KS	15401758 / R: Unrated-> 800P5											
<a href="#">24</a>	<a href="#">KOLBE JAMES ENGEL</a>	2.5	W	41	L	1	H		L	23	W	37
KS	15689796 / R: 649P6 -> 655P10											
<a href="#">25</a>	<a href="#">BRIAN QIAN</a>	2.5	L	3	W	38	W	18	L	20	D	29
KS	15686864 / R: 426P19-> 595P24											
<a href="#">26</a>	<a href="#">JAKE WILLIAM JANUS</a>	2.5	W	40	L	10	L	15	W	43	D	21
KS	15715217 / R: 524P8 -> 574P13											
<a href="#">27</a>	<a href="#">STEVEN DUAN</a>	2.0	L	2	L	17	W	38	W	37	L	16
KS	15388611 / R: 1010 -> 949											
<a href="#">28</a>	<a href="#">NOAH BRODY BRUGGEMAN</a>	2.0	L	6	W	40	W	37	L	12	L	15
KS	15732892 / R: Unrated-> 797P5											
<a href="#">29</a>	<a href="#">LUKE M TRAN</a>	2.0	L	9	D	23	W	36	L	19	D	25
KS	15393083 / R: 796P17-> 732P22											
<a href="#">30</a>	<a href="#">SARMILA VENKOBA SAH</a>	2.0	L	11	W	32	L	14	W	34	L	18
KS	14465092 / R: 617P24-> 670											
<a href="#">31</a>	<a href="#">AUSTIN H TRAN</a>	2.0	W	39	L	3	L	4	L	32	W	40
KS	15393077 / R: 675P17-> 646P22											
<a href="#">32</a>	<a href="#">LIAM MCKINNEY</a>	2.0	L	37	L	30	W	35	W	31	L	11
KS	15760090 / R: Unrated-> 593P5											
<a href="#">33</a>	<a href="#">OWEN WILLIAM NIELSEN</a>	2.0	L	12	W	35	L	21	L	11	W	42
KS	15692570 / R: 540P7 -> 586P12											
<a href="#">34</a>	<a href="#">JENSEN CHRISTIAN BRULL</a>	2.0	L	20	L	8	W	42	L	30	W	38
KS	15738158 / R: Unrated-> 570P5											
<a href="#">35</a>	<a href="#">MAGAN STUHR</a>	2.0	L	18	L	33	L	32	W	41	W	39
KS	15763716 / R: Unrated-> 409P5											
<a href="#">36</a>	<a href="#">MARION LILLIAN GIBSON</a>	1.5	L	7	D	42	L	29	L	22	W	43
KS	15767360 / R: Unrated-> 367P5											
<a href="#">37</a>	<a href="#">JENNIFER HUANG</a>	1.0	W	32	L	7	L	28	L	27	L	24
OK	15448256 / R: 594P22-> 580											
<a href="#">38</a>	<a href="#">ALESSIA NICOLE COKELEY</a>	1.0	L	16	L	25	L	27	W	42	L	34
KS	15763990 / R: Unrated-> 360P5											
<a href="#">39</a>	<a href="#">GABRIEL MURPHY</a>	1.0	L	31	L	4	W	41	L	18	L	35
KS	15766152 / R: Unrated-> 263P5											
<a href="#">40</a>	<a href="#">DEVON ROSE COKELEY</a>	1.0	L	26	L	28	B		L	16	L	31
KS	15764003 / R: Unrated-> 187P4											
<a href="#">41</a>	<a href="#">ROXIE COKELEY</a>	1.0	L	24	L	19	L	39	L	35	B	
KS	15764030 / R: Unrated-> 101P4											
<a href="#">42</a>	<a href="#">MINKA RAY-ANNE COKELEY</a>	0.5	L	15	D	36	L	34	L	38	L	33
KS	15764024 / R: Unrated-> 198P5											
<a href="#">43</a>	<a href="#">JEWELLA RAINE COKELEY</a>	0.5	L	21	H		L	23	L	26	L	36
KS	15764018 / R: Unrated-> 101P4											

## 2015 KANSAS OPEN GAMES

The following are games from the 2015 Kansas Open. I tried to have games from all three sections. I looked at over a 100 games and then analyzed 60 to come up with these 25. I used Fritz 12 to analyze and then copy and paste games into this document.

### GAMES NUMBERED

#### OPEN SECTION (pages 16 - 31)

- (1) David Scott 0–Ben Gradsky 1
- (2) Ben Gradsky 1– Chuck Johnson 0
- (3) Kyle Camarda  $\frac{1}{2}$  –Jack Easton  $\frac{1}{2}$
- (4) Jason Wawrzaszek 1 – Kaustabh Nimkar 0
- (5) Apramay Mishra 1 – Brady Barkemeyer 0
- (6) Nick Shearer 0 – Mohammadreza Hajjarbabi 1
- (7) Judson Temple  $\frac{1}{2}$  – Joshua Fernandes  $\frac{1}{2}$
- (8) Terry Wright  $\frac{1}{2}$  – Kiana Hajjarbabi  $\frac{1}{2}$
- (9) Apramay Mishra 0 – Jason Wawrzaszek 1

#### RESERVE SECTION (pages 31 - 46)

- (10) Shams Shaikh 0 – Bill Qian 1
- (11) Duane Hanks 0– Brian Duke 1
- (12) Matthew Wilson 0– Laurence Coker 1
- (13) Jesse Erb 1– Rita Joseph 0
- (14) Jesse Erb 1 – Brycen Parker 0
- (15) Brycen Parker 1 - Duane Hanks 0
- (16) Bill Qian  $\frac{1}{2}$  – John Tyler Madsen  $\frac{1}{2}$
- (17) William Brown 1 - Tom Phillips 0
- (18) Gabriel Maurer  $\frac{1}{2}$  – Laurence Coker  $\frac{1}{2}$

#### AMATEUR SECTION (pages 46 - 57)

- (19) Daryl Fouard 1 - Diane Camarda 0
- (20) Robert Moore 0 - Edward Nathan Perry 1
- (21) Daryl Fouard 0 - Jim Huang 1
- (22) Todd Easton 0 - Michael Schoenhofer 1
- (23) Michael Schoenhofer 0 - Adam Weller 1
- (24) Liam McKinney 1 - Austin Tran 0
- (25) Shahrzad Hajjarbabi 0 - Rajin Nagpal 1

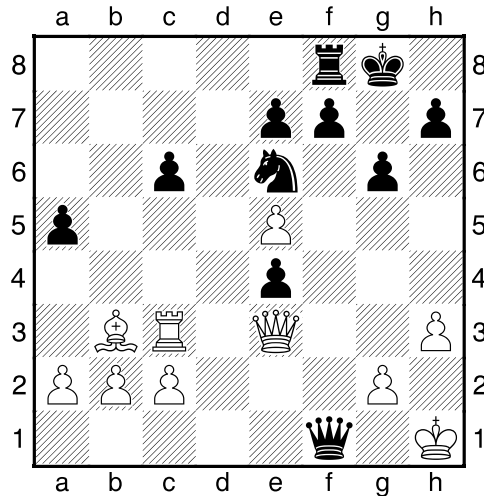
## OPEN SECTION GAMES

### (1) David Scott (2026) – Ben Gradsky (2135) [B90]

2015 Kansas Open (Rd 5), 19.07.2015 (Ben said this was his best game)

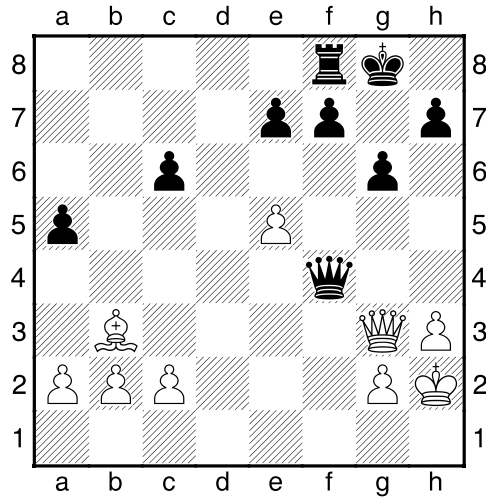
B90: Sicilian Najdorf: Unusual White 6th moves, 6 Be3 Ng4 and 6 Be3 e5 1.e4 c5 2.Nf3 d6 3.d4 cxd4 4.Nxd4 Nf6 5.Nc3 a6 6.h3 Just recently this is a very popular move against the Najdorf. The plan is to play g4 and put the bishop on g2. The dark-squared bishop goes to e3. 6...g6 Transposing in to a Dragon defense with a6 played.

7.Be3 Bg7 8.Qd2 Nc6 last book move 9.Nxc6 bxc6 10.Bc4 0-0 11.Bh6 Bxh6 12.Qxh6 Qa5 13.0-0 Rb8 14.Bb3 Be6 15.f4 Qc5+ 16.Kh1 Rb4 17.Rae1 Nh5 18.Rf3 a5 19.e5 Ng7 20.Ne4 Rxe4 21.Rxe4 d5 22.Rc3 Qf2 23.f5 dxe4 24.fxe6 Nxe6 25.Qe3 [25.Bxe6 Best 25...fxe6 26.Qe3  $\mp$ (-0.71)] 25...Qf1+ Diagram

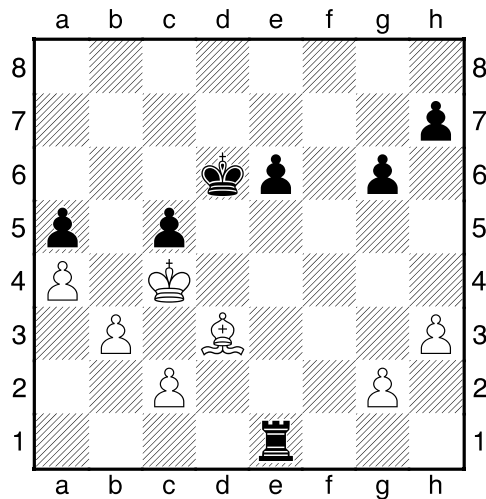


26.Kh2? [26.Qg1 Qf5 27.Bxe6 Qxe6 28.Qd4  $\mp$ (-1.38)] 26...Nf4!  
27.Qxe4 Ne2 Threatening the rook and mate, winning the exchange  
28.Qe3 Nxc3 29.Qxc3 Qf4+ 30.Qg3 Diagram

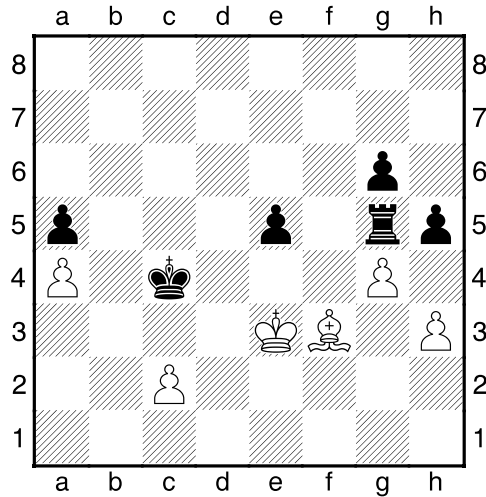




**30...Qxg3+?! [30...Qe4 Fritz likes this move better, but swapping off queens and then being the exchange up in an endgame seems more reasonable. ] 31.Kxg3 Rd8 32.Kf3 e6 33.Bc4 Rd1 34.a4 Kf8 35.Bd3 Ke7 36.Ke2 Ra1 37.b3 f6 38.exf6+ Kxf6 39.Be4 c5 40.Kd3 Ke5 41.Bf3 Ra2 42.Bd1 Kd5 43.Bf3+ Kd6 44.Be4 Ra1 45.Kc4 Re1 46.Bd3 Diagram**



**46...e5 Passed pawn 47.Kc3 Re3 48.Kd2 Rg3 49.Be4 c4 50.Bf3 Kc5 51.bxc4 Kxc4 52.Ke3 Rg5 53.g4 Trying to trap the rook. 53...h5 Diagram**

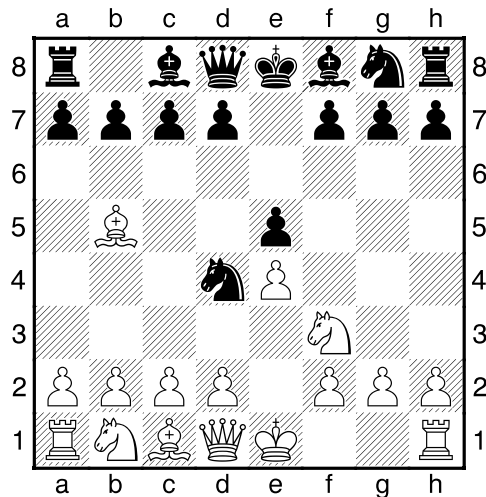


**54.h4?** [54.Bd1 Better, but still losing. ] **54...Rxg4!** **55.Bxg4 hxg4**  
**56.Kf2 e4 57.Kg3** White resigns **0-1**

**(2) Ben Gradsky (2135) – Chuck Johnson (2069) [C61]**

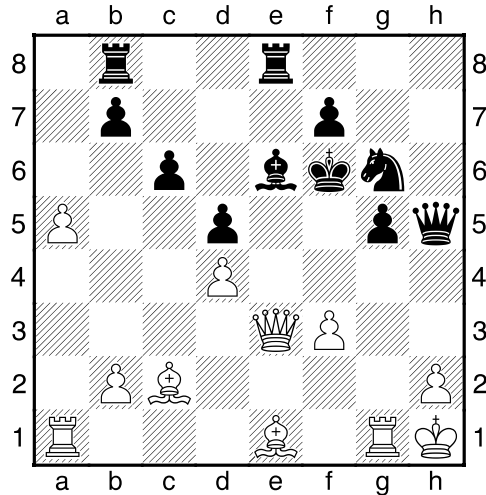
2015 Kansas Open (Rd 4), 19.07.2015

C61: Ruy Lopez: Bird's Defence **1.e4 e5 2.Nf3 Nc6 3.Bb5 Nd4**  
 Diagram

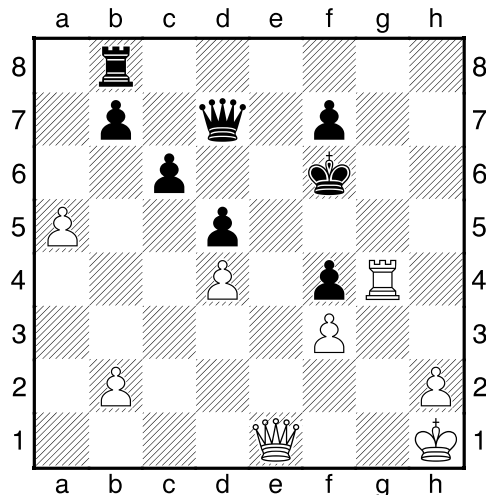


**4.Nxd4 exd4 5.0-0 Bc5 6.d3 c6 7.Bc4 d6 8.c3** last book move  
**8...Qh4 9.Nd2 Bg4 10.Qe1 Bb6 11.a4 a5 12.cxd4 Bxd4 13.Nb3 Bb6**  
**14.Bd2 Qh5 15.d4 Ne7 16.Kh1 0-0 17.Bd3 Be6 18.Ra3 Rfe8 19.Bc3**  
**Ng6 20.Qd2 Nh4 21.f3 g5 22.g4 Qh6 23.Nxa5 d5 24.e5 Rab8**

25.Nb3 Kh8 26.a5 Bd8 27.Nc5 Ng6 28.Bc2 Nf4 29.Nd3 Kg7 30.Qe3 Qh3 31.Rg1 Ng6 32.Raa1 h5 33.Nf2 Qh4 34.Be1 hxg4 35.Nxg4 Qh5 36.Nf6 Bxf6 37.exf6+ Kxf6 Diagram



38.Bg3? [38.Bd2! Bd7 39.Qxg5+ Qxg5 40.Bxg5+ +-(2.24)] 38...Bf5 39.Qc3 Nf4 40.Bxf4 gxf4= 41.Bxf5 Qxf5? [41...Re2! 42.Rg2 Rxc2 43.Kxc2 Rh8 44.Rh1 Kxf5 ±(-0.85) and it is black who has a slight advantage.] 42.Qb4 Qe6 43.Rae1 Qd7 44.Rg4 Rxe1+ 45.Qxe1 Diagram

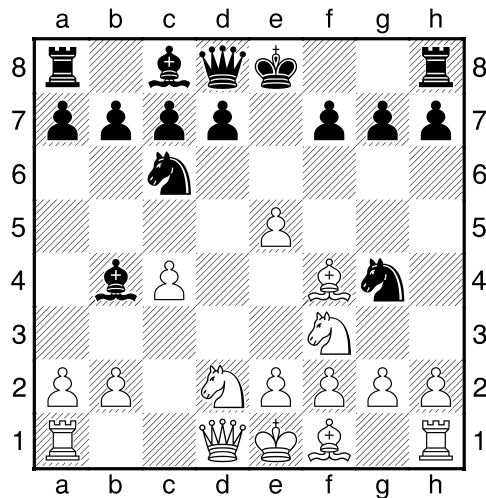


**45...Qf5?** Losing move [45...Qd6 46.Qh4+ Ke6 47.Rxf4 Qe7 48.Qg4+ Kd6 ± (0.66)] **46.Qh4+! Ke6 47.Rg5 Qb1+ 48.Rg1 Qf5 49.Re1+ Kd7 50.Qe7+ Kc8 51.Qf8+ Kc7 52.Re7+ Black resigns 1-0**

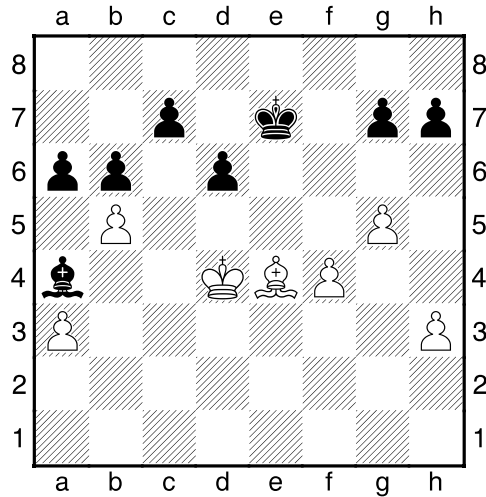
**(3) Jack Easton (2121) – Kyle Camarda (1983) [A52]**

2015 Kansas Open (Rd 3), 18.07.2015 (Interesting endgame position)

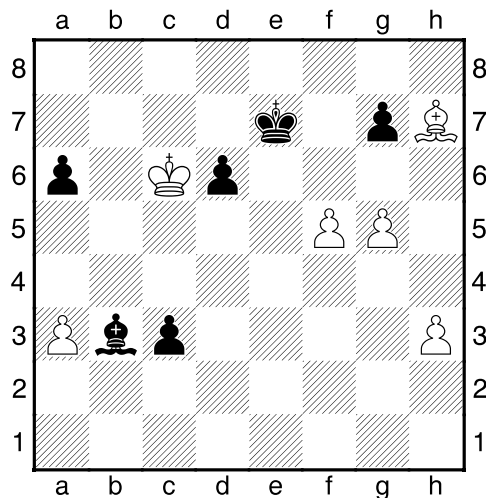
A52: Budapest Gambit **1.d4 Nf6 2.c4 e5 3.dxe5 Ng4 4.Bf4 Bb4+ 5.Nd2 Nc6 6.Ngf3** Diagram



**6...Qe7 7.a3 Ngxe5 8.Nxe5 Nxe5 9.e3 Bxd2+ 10.Qxd2 d6 11.Be2 0-0 12.0-0 last book move 12...Be6 13.Qc3 Ng6 14.Bg3 f5 15.Rfe1 Rae8 16.Bf3 b6 17.Rac1 Qf7 18.h3 Qd7 19.b4 f4 20.exf4 Nxf4 21.Bxf4 Rxf4 22.Bd5 Kf8 23.Qe3 Rf6 24.Qe4 Bf5 25.Qxe8+ Qxe8 26.Rxe8+ Kxe8 27.Re1+ Kd7 28.b5 Be6 29.Bc6+ Ke7 30.Re4 Kf7 31.f4 Rf5 32.Be8+ Kf6 33.g4 Rc5 34.Kf2 Rxc4 35.Rxc4 Bxc4 36.Bc6 Bb3 37.Ke3 Ba4 38.g5+ Ke7 39.Kd4 a6 40.Be4** Diagram



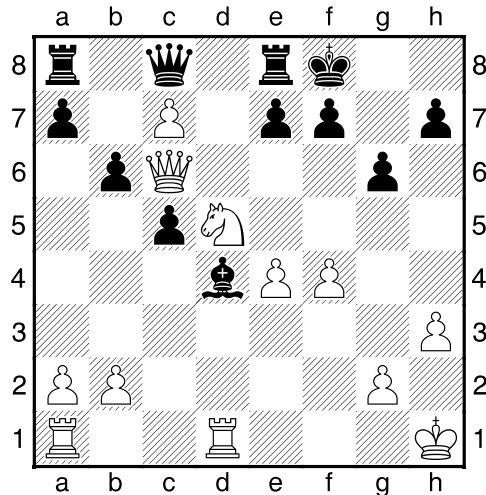
**40...Bxb5** [40...axb5 41.Bxh7 Bb3 42.Bg6 c5+ 43.Ke3 Bf7 (43...Be6 44.f5 Bb3 45.h4=) 44.Bxf7 Kxf7 45.f5 d5 46.h4=] **41.Bxh7 c5+**  
**42.Kd5 Ba4 43.f5 Bb3+ 44.Kc6 c4 45.Kxb6 c3 46.Kc6** Diagram



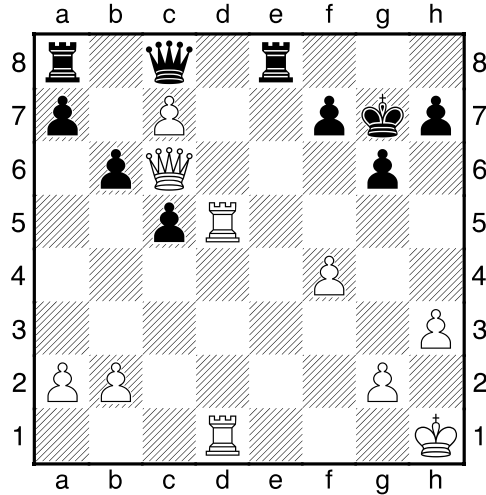
**46...Kf7?** [46...Bg8 47.f6+ (47.Bg6 Bf7 48.Bh7 (48.f6+ gxf6 49.gxf6+ Kxf6 50.Bc2 Bg6 -+(-6.90)) 48...Kf8 49.Kxd6 (49.f6 g6 -+(-17.95)) ) 47...gxf6 48.gxf6+ Kxf6 49.Bc2 Ke5 -+(-6.31)] **47.Bg6+ Kf8 48.f6 gxf6 49.gxf6** 1/2-1/2

**(4) Jason Wawrzaszek (2038) – Kaustabh Nimkar (1782)**  
**[B07]** 2015 Kansas Open (Rd 1), 16.07.2015

B07: Pirc Defence: Miscellaneous Systems 1.e4 c5 2.c3 d6 3.d4 cxd4 4.cxd4 Nf6 5.Nc3 g6 6.Nf3 Bg7 7.Bd3 0-0 8.0-0 last book move 8...Bg4 9.h3 Bxf3 10.Qxf3 Nc6 11.Be3 Nd7 12.d5 Nde5 13.Qe2 Nxd3 14.dxc6 Nc5 15.Rfd1 Qc8 16.Nd5 Re8 17.Bxc5 dxc5 18.c7 Kf8? [18...e6 Better 19.Ne7+ Rxe7 20.Rd8+ Qxd8 21.cxd8Q+ Rxd8 ±(0.51)] 19.Qb5 b6= 20.Qc6 Be5 21.f4 Bd4+ 22.Kh1 Diagram



22...e6? [22...Qe6 23.Qxe6 fxe6 24.Nb4 e5 25.Nc6 Rec8=] 23.Qd6+ This is not as good as taking the bishop first, then checking on d6 according to fritz [23.Rxd4 cxd4 (23...exd5 24.Rxd5 Qe6 25.Qxe6 fxe6 26.Rd7 h6 27.Rad1 +-(7.78)) 24.Qd6+ Kg8 (24...Kg7 25.Qe5+ Kg8 26.Nf6+ Kf8 27.Rd1 Re7 28.Nxh7+ Kg8 29.Nf6+ Kf8 30.Nd5 Ke8 31.Nxe7 Kxe7 32.Rxd4 +-(10.61)) 25.Nf6+ Kg7 26.Qe5 Kf8 27.Nxh7+ Kg8 28.Nf6+ Kf8 29.Nxe8 Kxe8 +-(9.59)] 23...Kg7 24.Rxd4 exd5 [24...cxd4 25.Qe5+ f6 26.Nxf6 Kf7 27.Ng4 Re7 28.Rc1 h5 29.Nh6+ Ke8 30.Qh8+ Kd7 31.Qxd4+ Ke8 32.Rd1 Rh7 33.Qf6 Rxh6 34.Qg7 h4 35.Qxh6 a5 mate in 15] 25.Rxd5 Rxe4 26.Rad1 Re8 27.Qc6 Diagram

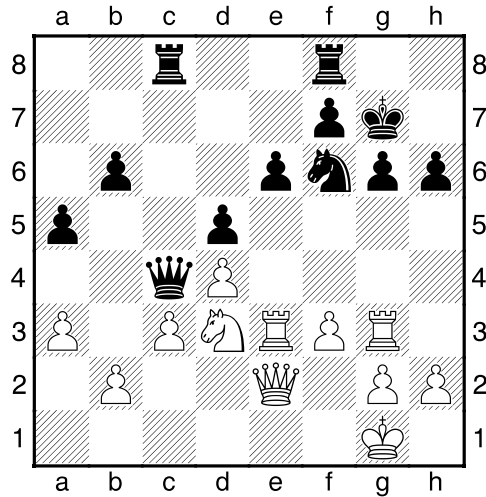


**27...Re6 28.Qxa8! Qxc7 29.f5 gxf5 30.Rxf5 Qe7 31.Rdf1 Re2  
32.Rxf7+ Qxf7 33.Rxf7+ Kxf7 34. Qf3+ picking up rook 1-0**

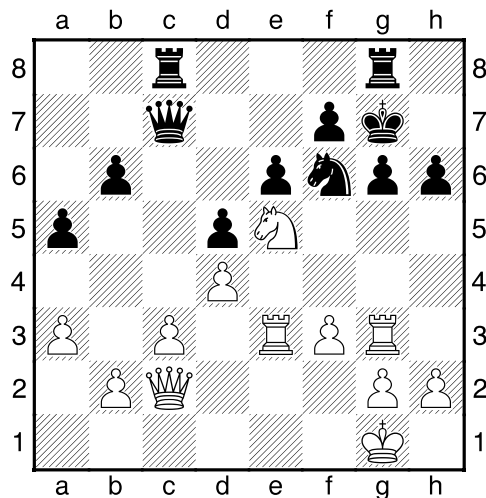
### **(5) Apramay Mishra (1705) – Brady Barkemeyer (1918)**

**[D02]** 2015 Kansas Open (Rd 1), 18.07.2015 (Rook sacrifice)

D02: 1 d4 d5 2 Nf3 sidelines, including 2...Nf6 3 g3 and 2...Nf6 3 Bf4  
**1.d4 d5 2.Nf3 Nf6 3.Bf4 e6 4.Nbd2 c5 5.e3 Bd6 6.Bg5** last book  
 move 6...cxd4 7.exd4 Be7 8.Bd3 Nbd7 9.0-0 0-0 10.Re1 b6 11.Ne5  
 h6 12.Bh4 Nxe5 13.Rxe5 Nd7 14.Bxe7 Qxe7 15.Re3 Qb4 16.Nb3  
 a5 17.Rg3 Qe7 18.Qh5 Qf6 19.Re1 Ba6 20.Bxa6 Rxa6 21.c3 Kh7  
 22.Ree3 g6 23.Qe2 Ra7 24.Nd2 Rc7 Very slight advantage for white  
 here  $\pm(0.31)$  25.Rh3 Kg7 26.Nf3 Rcc8 27.Rg3 Qf5 28.a3 Qb1+  
 29.Ne1 Nf6 30.f3 Qa2 31.Nd3 Qc4 Diagram



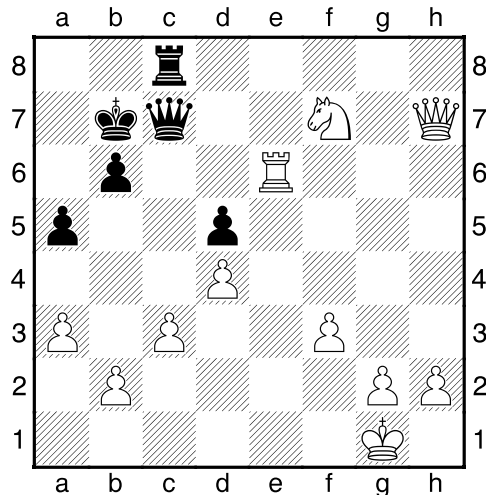
**32.Qc2?** [32.Qd2 Better with slight advantage.  $\pm(0.70)$ ] **32...Rg8?** Losing move [32...Qxd4 33.Qd2 Qc4 34.Ne5 Qf4 It is black who has advantage here.  $\mp-1.17$ ] **33.Ne5! Qc7?** Diagram



[33...Qxd4 Loses queen for two rooks with significant positional disadvantage for black, but better than game continuation. 34.Rxg6+ Kf8 35.Qe2 Qxe3+ 36.Qxe3 fxc6 37.Qxb6 Re8 38.Qd6+ Re7 (38...Kg7 39.Qc7+ Kh8 40.Qf7 Nh5 41.Nxg6+ Rxg6 42.Qxg6 Ng7 +- (8.96)) 39.Nc6 Rgg7 40.Qd8+ Ne8 41.Nxe7 Rxe7 42.Qxa5 +-(6.30)] **34.Rxg6+! Kf8** [34...fxg6 Not any better 35.Qxg6+ Kf8 (35...Kh8 36.Nf7+ Qxf7 37.Qxf7 Rgf8 38.Qg6 Ng8 39.Rxe6 Rcd8 40.Qh5 Rd7 41.Rxb6) 36.Qxf6+ Ke8 37.Qxe6+ Qe7 38.Qxc8+ Qd8 39.Qe6+ Qe7



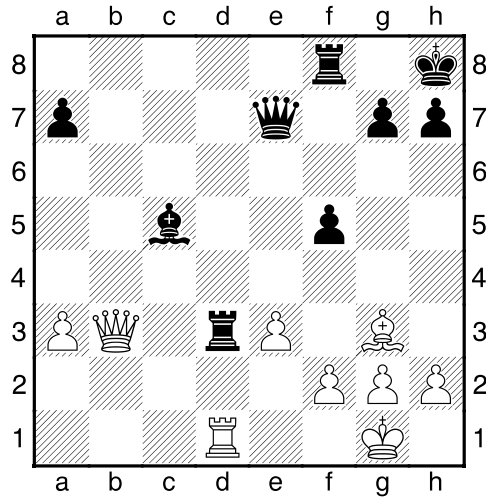
40.Qxg8+ Qf8 41.Nc4+ Kd7 42.Qxf8] 35.Rxf6 Rg7 36.Rxh6 Ke7  
 37.Rh7 Rxh7 38.Qxh7 Kd6 39.Nxf7+ Kc6 40.Rxe6+ Kb7 Diagram



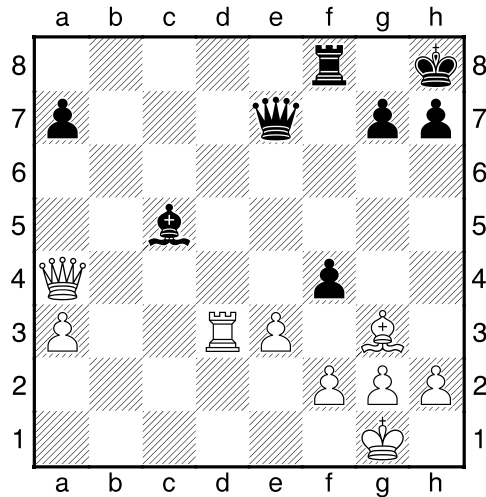
41.Nd6+ Kb8 42.Qxc7+ Rxc7 43.Re8+ Ka7 44.Nb5+ Kb7 45.Nxc7  
 Kxc7 46.h4 Kc6 47.h5 Kb5 48.h6 Kc4 49.h7 b5 50.h8Q Kb3  
 51.Rb8 Ka4 52.Qf6 b4 53.Qb6 Kb3 54.Qxa5 Ka2 55.Qa4 b3  
 56.Qxb3+ Ka1 57.Qd1+ Ka2 58.b4 Kb2 59.Re8 Kxa3 60.Qb1 Mate  
 in two 1-0

**(6) Nick Shearer (1624) – Mohammadreza Hajiarbabi**

**(1902) [D30]** 2015 Kansas Open Overland Park (Rd 5), 19.07.2015  
 D30: Queen's Gambit Declined: Systems without Nc3 1.d4 d5 2.Nf3  
 Nf6 3.c4 e6 4.Bg5 Nbd7 5.e3 c6 6.Bd3 Qa5+ 7.Nbd2 dxc4 8.Bxc4  
 Ne4 9.Bf4 Bb4 10.a3 Nxd2 11.Nxd2 Be7 12.b4 Qd8 13.0-0 0-0 last  
 book move 14.Ne4 Nb6 15.Be2 Nd5 16.Be5 f6 17.Bg3 f5 18.Nc5 b6  
 19.Nd3 Nc3 20.Qc2 Nxe2+ 21.Qxe2 Ba6 22.Rfd1 c5 23.dxc5 bxc5  
 24.bxc5 Bxc5 25.Qa2 Bxd3 26.Qxe6+ Kh8 27.Qb3 Qe7 28.Rxd3  
 Rad8 29.Rad1 Rxd3 Diagram

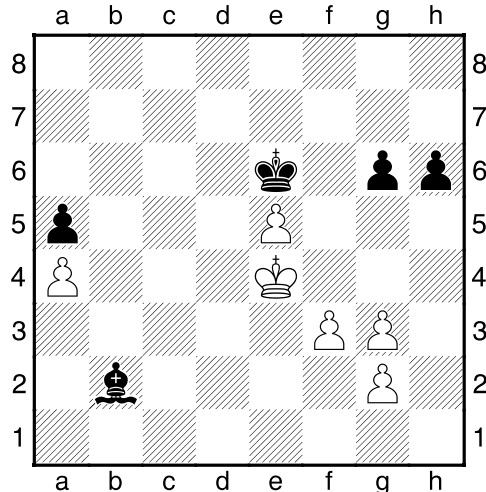


**30.Rxd3?** White goes from advantage to disadvantage and loses the exchange. White with this move has a weak back rank [30.Qxd3 Bxa3 31.Qb5 White with advantage ±(1.00)] **30...f4! 31.Qa4** Diagram



[31.Bxf4 Rxf4 32.g3 Rf8 -+(-1.62)] **31...fxg3** [31...fxe3 Actually better 32.Qd1 (32.Kf1 Rxf2+ (32...e2+ 33.Ke1 Rxf2 34.Rd8+ Qxd8 35.Bxf2 Qd1+ 36.Qxd1 exd1Q+ 37.Kxd1 Bxf2) 33.Ke1 e2 34.Rd8+ Qxd8 35.Bxf2 Qd1+ 36.Qxd1 exd1Q+ 37.Kxd1 Bxf2 -+(-4.91)) 32...e2 33.Qe1 Bb6 -+(-5.11)] **32.hxg3 Qf6 33.Qc2 Qa1+ 34.Kh2 Bb6 35.Qc3** [35.a4 Better according to Fritz. May not be a good idea for white to trade off queens] **35...Qxc3 36.Rxc3 h6 37.f3 Kg8 38.e4 Rd8** Black is gradually increasing his advantage -+(-2.17) **39.Rc2**

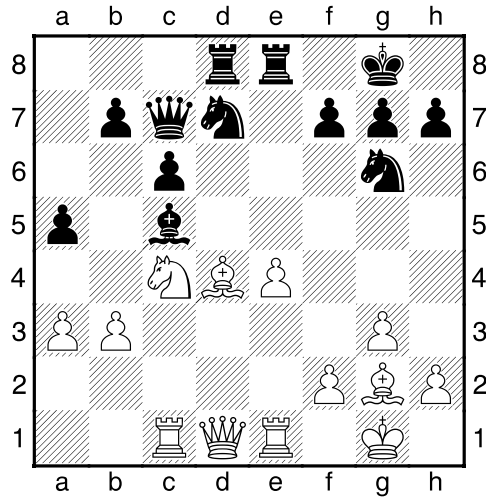
**Rd3 40.Ra2 Bc5 41.a4 a5 42.Kh3 Ra3** Forcing exchange of rooks, otherwise black wins a pawn **43.Rxa3 Bxa3 44.Kg4 Kf7 45.Kf5 Bb2 46.e5 g6+ 47.Ke4 Ke6** Diagram



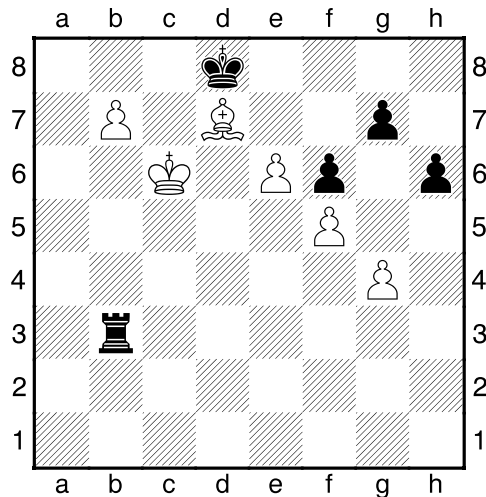
**48.g4?** Simply loses a pawn, but white is lost anyway [48.f4 h5 49.Kd3 Kf5 50.Kc4 Ba3 -+(-6.83)] **48...Bxe5 49.f4 Bb2 50.f5+ Kf6 51.Kf4 gxf5 52.gxf5 h5 53.g4 hxg4 54.Kxg4 Bc1 55.Kf3 Kxf5 0-1**

### **(7) Judson Temple (1800) – Joshua Fernandes (1733)**

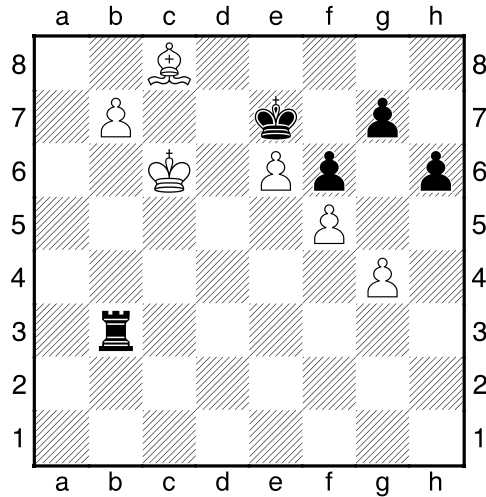
**[A13]** 2015 Kansas Open (Rd 2), 18.07.2015 (Interesting endgame position) A13: English Opening: **1...e6 1.c4 e6 2.g3 d5 3.cxd5 exd5 4.Bg2 Nf6 5.Nf3** last book move **5...Nbd7 6.0-0 Be7 7.d3 0-0 8.Nbd2 c6 9.a3 a5 10.b3 Re8 11.Bb2 Nf8 12.Re1 Ng6 13.Rc1 Bd7 14.e4 dxe4 15.dxe4 Qb6 16.Nc4 Qc7 17.Nfe5 Bc5 18.Nxd7 Nxd7 19.Bd4 Rad8** Diagram



20.Bxc5? Loses exchange 20...Nxc5 21.Qc2 Nd3 22.Rcd1 Nxe1  
 23.Rxe1 Ne5 24.Ne3 Qd6 25.f4 Ng6 26.Nc4 Qc5+ 27.Qf2 Qxf2+  
 28.Kxf2 b5 29.Nxa5 Rd2+ 30.Re2 Rxe2+ 31.Kxe2 Ne7 32.e5 Ra8  
 33.b4 Ra6 34.Kd3 Kf8 35.Kd4 Ke8 36.Kc5 Kd7 37.Be4 h6 38.h3  
 Kc7 39.g4 Ra8 40.f5 f6 41.Nxc6 Nxc6 42.Bxc6 Rxa3 43.e6 Rc3+  
 44.Kd5 Re3 45.Bxb5 Re5+ 46.Kc4 Kd6 47.Bd7 Re3 48.b5 Rxh3  
 49.b6 Re3 50.Kb5= Ke7? 51.b7 Rb3+ 52.Kc6 Kd8? Diagram



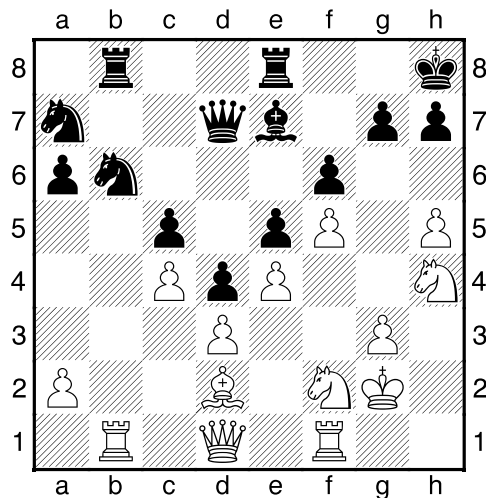
53.Bc8?= [53.b8Q+! wins 53...Rxb8 54.Kd6 Rb6+ 55.Bc6 Rxc6+  
 56.Kxc6+- An easy win] 53...Ke7? Diagram



Draw agreed, but apparently not a draw. White wins. 54.Kc7 Rc3+ 55.Kb8 Rb3 56.Bd7 Kd8 57.Ba4 Ra3 58.Bc6 Rb3 59.e7+ Kxe7 60.Kc7 Rb4 61.b8=Q Rxb8 62.Kxb8 (Not an easy win to find) 1/2-1/2

**(8) Terry Wright (1898) – Kiana Hajiarbabi (1689) [B20]**

2015 Kansas Open (Rd 5), 19.07.2015 (missed opportunity for white)  
 B20: Sicilian: Unusual White 2nd moves 1.e4 c5 2.g3 d6 3.Bg2 Nf6 4.d3 last book move 4...Nc6 5.c3 d5 6.Nd2 d4 7.c4 e5 8.Nh3 Be7 9.0-0 0-0 10.f3 a6 11.Nf2 b5 12.b3 Nd7 13.f4 f6 14.Bh3 Nb6 15.Bxc8 Qxc8 16.f5 Qd7 17.h4 Kh8 18.Kg2 Rg8 19.h5= Na7 20.Nf3 bxc4 21.bxc4 Na4 22.Nh4 Rge8 23.Bd2 Nb6 24.Rb1 Rab8 Diagram

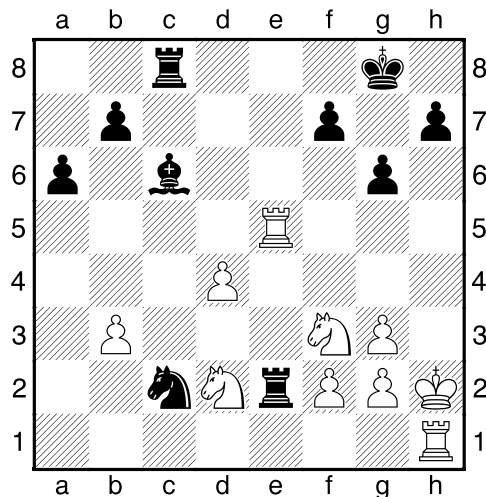


**25.Rb3** [25.h6! Fritz likes this plan better 25...Bf8 26.Qh5 Kg8 27.Rb3 Nc6 28.Rfb1 +-(1.92)] **25...Nc6 26.a3** [26.h6! Once again Fritz likes this better 26...Bf8 27.Qh5 Kg8 28.Rfb1 +-(1.79)] **26...Qa7 27.Qc2 Nd7 28.Rfb1 Rxb3 29.Rxb3 Rb8 30.Kf3 Rxb3 31.Qxb3 Qb6 32.Qxb6 Nxb6 33.Nd1 Na4= 34.Ke2 Bd8 35.Nf3 Kg8 36.g4 Kf7 37.g5 fxg5 38.Bxg5 Bf6** Very slight advantage for white  $\pm(0.30)$   $\frac{1}{2}$ - $\frac{1}{2}$

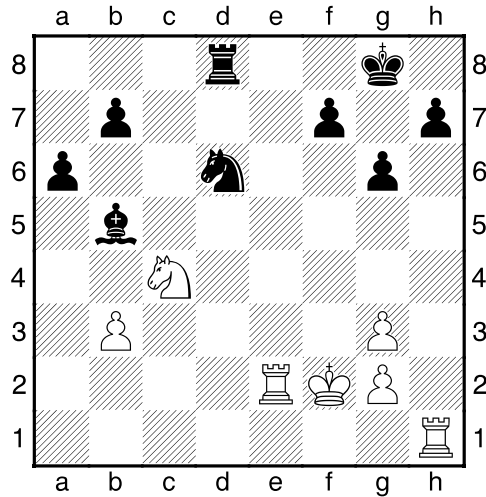
### (9) Apramay Mishra (1705) – Jason Wawrzaszek (2038)

[D02] 2015 Kansas Open (5), 19.07.2015

D02: 1.d4 d5 2.Nf3 sidelines, including 2...Nf6 3.g3 and 2...Nf6 3.Bf4  
**1.d4 d5 2.Nf3 Nf6 3.Bf4 c5 4.e3 Nc6 5.c3 Qb6 6.Qb3 c4 7.Qc2 Bf5 8.Qc1 Nh5 9.Bg3** last book move **9...Nxc3 10.hxc3 g6 11.Nbd2 Bg7 12.Nh4 Bd7 13.b3 cxb3 14.axb3 e5 15.Nhf3 0-0 16.Be2 exd4 17.cxd4 Rfe8 18.Kf1 Rac8 19.Qa3 Nb4 20.Kg1 a6 21.Kh2 Nc2 22.Qa5 Bxd4 23.exd4 Qxa5 24.Rxa5 Rxe2 25.Rxd5 Bc6 26.Re5**  
 Diagram



-+(-1.73) **26...Rxf2?!** The rook is trapped and white wins exchange, but black gets two pawns and piece for exchange. White pawns also look a mess. **27.Kg1?!** [27.d5! Better. Starts complicated sequence that ends up netting two pieces for a rook for white with equal position whereas black had a superior slightly better position before. 27...f6 28.dxc6 fxe5 29.cxb7 Rb8 30.Rc1 Rxb7 31.Rxc2=] **27...Rxd2 28.Nxd2 Nxd4 29.Kf2 Rd8 30.Re3 Nc2 31.Re2 Nd4 32.Re3 Nf5 33.Re2 Bb5 34.Nc4 Nd6** Diagram



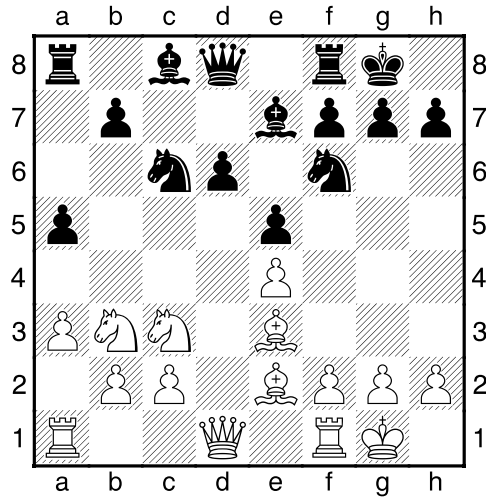
**35.Rd1?** Losing move [35.Rh4 Better, though black retains some advantage; 35.Rc1 Better, though black retains slight advantage, even though being down exchange] **35...Bxc4** [35...Ne4+ Fritz likes this move better, keeping the light-squared bishop. 36.Rxe4 Rxd1 37.g4 Bc6] **36.bxc4 Ne4+ 37.Rxe4** [37.Ke1? Rxd1+ 38.Kxd1 Nc3+ 39.Kd2 Nxe2 40.Kxe2 -+(-8.80)] **37...Rxd1 38.Re7 Rb1 39.Ke2 Rb3 40.g4 a5 41.Kd2 a4 42.Kc2 Kg7 43.g5 Rb6 44.Rc7** [44.Re1 Better, but white is still losing] **44...a3 45.Rc5 Rb2+ 46.Kc3 Rxc2 47.Ra5 f6 48.gxf6+ Kxf6 49.Kb4 a2 50.Kc5 Rg5+ 51.Kb4 Rxa5 52.c5 0-1**

## RESERVE SECTION

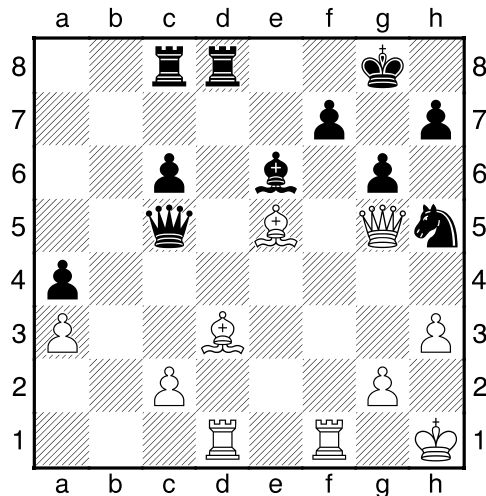
### (10) Shams Shaikh (1624) – Bill Qian (1579) [B59]

2015 Kansas Open (3), 17.07.2015 (Bill finished tied for first in Reserve– This game from third round)

B59: Classical Sicilian: 6 Be2 e5 7 Nb3 1.e4 c5 2.Nf3 Nc6 3.d4 cxd4 4.Nxd4 Nf6 5.Nc3 d6 6.Be2 e5 7.Nb3 Be7 8.0-0 0-0 9.Be3 a5 10.a3  
Diagram

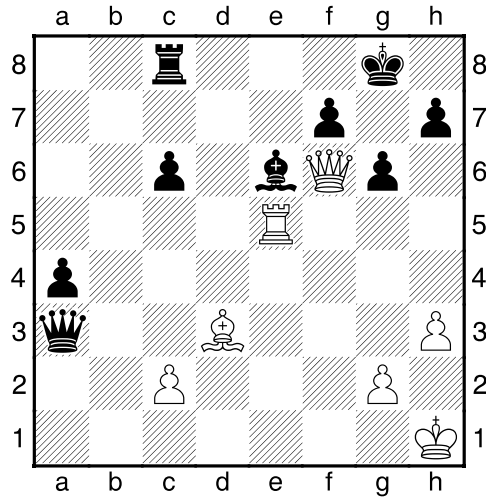


10...Be6 last book move 11.f4 exf4 12.Bxf4 a4 13.Nd4 Qb6 14.Be3 Rac8 15.Qd2 Qa5 16.Nxc6 bxc6 17.Nd5 Qd8 18.Nxe7+ Qxe7 19.Bg5 Qa7+ 20.Be3 Qb8 21.Bd3 Qxb2 22.Qf2 Ng4 23.Qf3 Qf6 24.Qg3 Qe5 25.Bf4 Qd4+ 26.Kh1 Rfd8 27.Rad1 Qc5 28.h3 Nf6 29.e5 dxe5 30.Bxe5 Nh5 31.Qg5 g6 Diagram

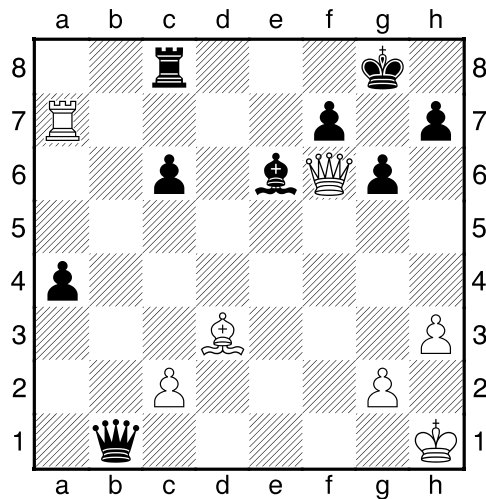


32.Rf6? [32.Bxg6 hxg6 (32...Ng3+ Better 33.Qxg3 fxg6 +-(1.60)) 33.Rxd8+ Rxd8 34.Qxd8+ Qf8 35.Qxf8+ Kxf8 +-(4.33)] 32...Rd5 33.Re1 Nxf6 34.Qxf6 Rxe5 35.Rxe5 Qxa3? Diagram





[35...Qd6  $\mp$ (-0.92)] **36.Ra5?** [36.Rxe6! fxe6 37.Qxe6+ Kg7 38.Qxc8 Qc1+ 39.Kh2 Qf4+ (39...a3 Pushing the pawn does not work black, but white has to be careful 40.Qc7+ Kh6 41.Qf7 Qb2 42.Qf8+ Qg7 43.Qf4+ g5 44.Qd6+ Kh5 45.g4+ Kh4 46.Qg3#) 40.Kg1 Qe3+ 41.Kf1 Qf4+ 42.Ke2 Qe5+ 43.Kd1 Qa1+ (43...a3 44.Qd7+ Kh6 45.Qf7 +- (2.46)) 44.Kd2 Checks are gone] **36...Qb4 37.Ra7 Qb1+** Diagram

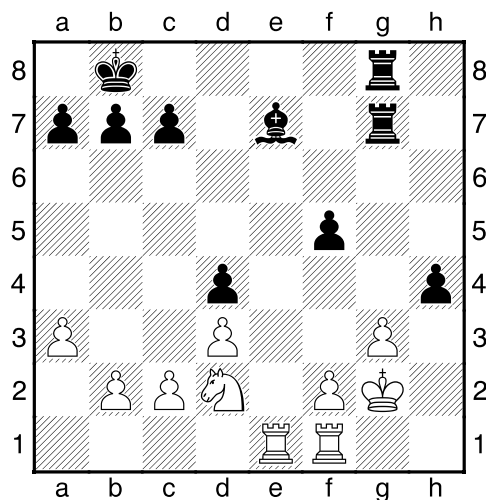


**38.Kh2?** Loses [38.Qf1 Qxf1+ 39.Bxf1 Bf5 40.Bd3 Bxd3 41.cxd3 Rd8 -+(-2.06)] **38...Qb8+ 0-1**

### (11) Duane Hanks (1621) – Brian Duke (1696) [A07]

2015 Kansas Open (3), 18.07.2015 (Brian Duke from Oklahoma finished tied for first in Reserve with Bill Qian– Game from third rd)

A07: Réti Opening: New York and Capablanca Systems 1.Nf3 d5 2.g3 Bf5 3.Bg2 last book move 3...Nc6 4.0-0 Qd7 5.d3 Bh3 6.Bxh3 Qxh3 7.e4 Nf6 8.Ng5 Qd7 9.exd5 Nxd5 10.Bd2 f6 11.Ne4 e5 12.Nbc3 0-0-0 13.Nxd5 Qxd5 14.Be3 Kb8 15.a3 h5 16.h4 Be7 17.Qe2 Nd4 18.Bxd4 Qxd4 19.Nc3 g5 20.hxg5 Rdg8 21.Qe3 Rxg5 22.Qxd4 exd4 23.Ne4 Rg7 24.Rae1 f5 25.Nd2 h4 26.Kg2 Rhg8 Diagram

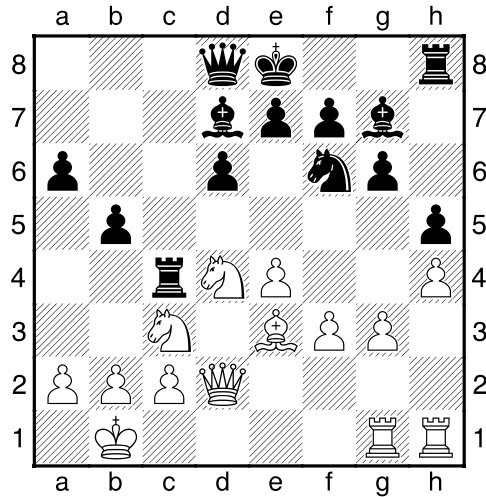


27.Kh2? Losing move [27.Re5 f4 (27...hxg3 28.f4 Rh8 29.Nf3 Bd6 30.Rxf5 Rg4=; 27...Bd6 28.Rxf5 hxg3 29.f4=) 28.g4 Rxg4+ 29.Kh3 Bd6 30.Rd5=] 27...hxg3+ 28.fxg3 Bd6 29.Rf3 [29.Re6 Better, but still losing 29...Bxg3+ 30.Kg2 Bf4+ -+(-6.92)] 29...Rxg3 30.Re8+ Rxe8 31.Rxd4 Re2+ 32.Kh3 Bxg3 0-1

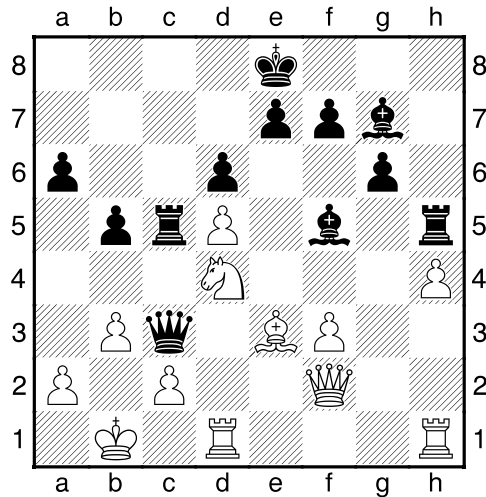
### (12) Matthew Wilson (1264) – Laurence Coker (1524)

[B72] 2015 Kansas Open (4), 19.07.2015 (One of my games)

B72: Sicilian Dragon: 6 Be3, lines with h3+Bc4 and sidelines 1.e4 c5 2.Nf3 d6 3.d4 cxd4 4.Nxd4 Nf6 5.Nc3 g6 6.Be2 Bg7 7.Be3 Nc6 8.Qd2 Bd7 9.h4 last book move 9...h5 10.f3 a6 11.0-0-0 Rc8 12.Kb1 Ne5 13.Rdg1 Nc4 14.Bxc4 Rxc4 15.g3= b5 Diagram



**16.b3** This weakens the dark squares. **16...Rc8 17.Nd5** Not exactly sure of the logic behind this move **17...Nxd5 18.exd5 Qc7 19.g4 Qc3 20.Qf2 Rc5 21.gxh5 Rxh5 22.Rd1 Bf5!** Diagram

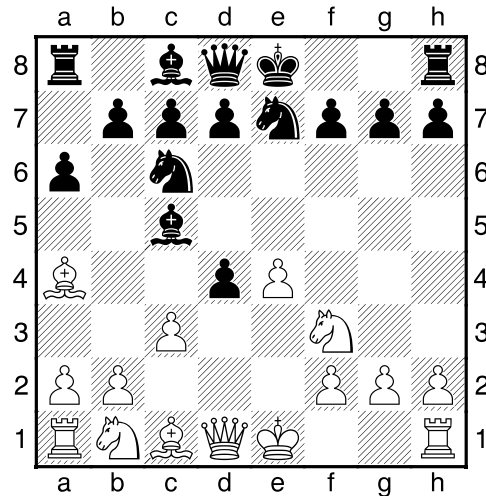


**23.Qd2 Bxc2+ 24.Kc1??** [24.Qxc2 I actually expected this. 24...Qxe3 -+ (-3.71) I like my position here] **24...Qa1# 0-1**

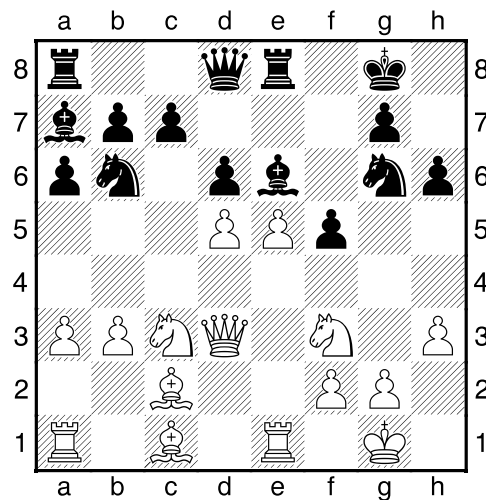
### (13) Jesse Erb (1671) – Rita Joseph (1351) [C70]

2015 Kansas Open (2), 18.07.2015 (Jesse tied for third place Reserve)

C70: Ruy Lopez: 3...a6 4 Ba4, Norwegian and Delayed Schliemann  
1.e4 e5 2.Nf3 Nc6 3.Bb5 Bc5 4.c3 a6 5.Ba4 last book move  
5...Nge7 6.d4 exd4 Diagram



7.cxd4 Bb6?! [7...Bb4+ Better] 8.Nc3 0-0 9.0-0 d6 10.h3 h6 11.a3  
Bd7 12.Be3 Na5 13.Bc2 Nc4 14.Bf4 Ng6 15.Bc1 Ba7 16.b3 Nb6  
17.Qd3 f5 18.e5 Re8 19.Re1 Be6 20.d5 Diagram

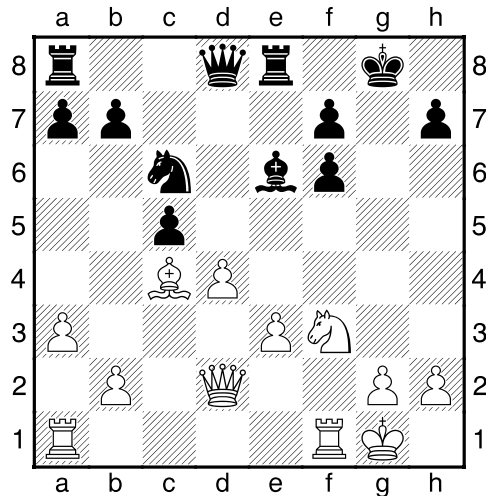


20...Bd7? Losing move. Position for black falls apart after this [20...Nxd5! 21.Nxd5 dxe5 22.Nc3 e4= Black wins piece back] 21.e6 Bb5? [21...Rf8 A piece is lost but black plays on 22.exd7 Nxd7 +- (3.75)] 22.Qxf5 Nf8? 23.Qf7+! Kh8 24.e7 Qd7 25.exf8Q+ Rxf8 26.Qg6 Kg8 27.Bxh6 Rf6 28.Qh7+ Kf8 29.Qh8+ Kf7 30.Qxg7# 1-0

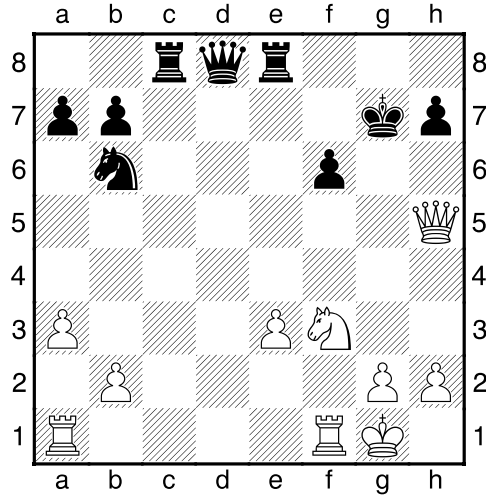
**(14) Jesse Erb (1671) – Brycen Parker (1076) [C01]**

2015 Kansas Open (5), 19.07.2015 (another game by Jesse Erb)

C01: French: Exchange Variation 1.e4 e6 2.d4 d5 3.exd5 exd5 4.c4 Nf6 last book move 5.a3 Be7 6.Nf3 0-0 7.Be2 c5 8.0-0 Nc6 9.Be3 Ng4 10.Qd2 Nxe3 11.fxe3 Re8 12.Nc3 dxc4 13.Bxc4 Bf6 14.Nd5 Be6? 15.Nxf6+ gxf6 Diagram



Black appears to not have taken f6 with the queen because of concern of discovered attack along f file, but taking with g pawn is worse [15...Qxf6 16.d5 Red8 17.Nd4 Qg5 18.dxe6 cxd4 19.exf7+ Kf8 20.Rae1 dxe3 21.Qxe3 Qxe3+ 22.Rxe3 +-(1.87)] 16.d5! Na5 17.dxe6 Nxc4 18.Qc3? Nb6? [18...Qd5 19.exf7+ Qxf7 20.e4 ±(0.95)] 19.exf7+ Kxf7 20.Qxc5 Rc8 21.Qh5+ Kg7? Diagram

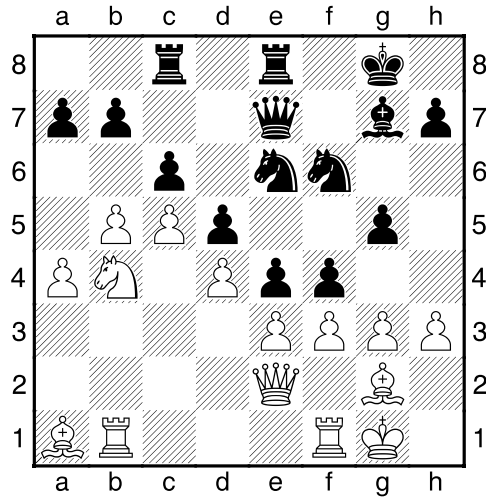


[21...Kg8 Better] **22.Ng5!** Fritz says mate in 11 **22...Qd3 23.Qf7+ Kh8 24.Qxf6+ Kg8 25.e4 Rf8 26.Qe6+ [26.Nf7 Better] 26...Kh8 27.Nf7+ Rxf7 28.Rxf7 Qd4+ 29.Kh1 Qxb2? 30.Raf1 Qxa3?** Game is lost anyway. It is mate in 2 now. **1-0**

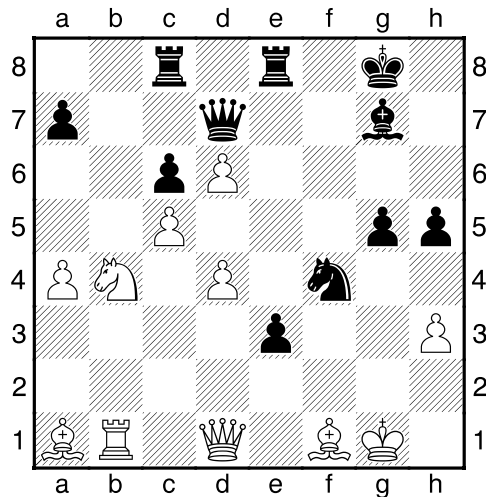
**(15) Brycen Parker (1076) – Duane Hanks (1696) [E62]**

2015 Kansas Open (4), 19.07.2015

E62: King's Indian: Fianchetto: 6...c6 and Panno Variation (6...Nc6) without ...a6 **1.c4 g6 2.g3 d6 3.Bg2 Nf6 4.Nf3 Bg7 5.0-0 0-0 6.d4 c6 7.Nc3 Bg4 8.h3 Bxf3 9.Bxf3 Nbd7 10.b3 e5 last book move 11.e3 Re8 12.Qc2 Qe7 13.Bb2 e4 14.Bg2 d5 15.Rac1 Rac8 16.Qe2 Nb6 17.c5 Nbd7 18.b4 Nf8 19.b5 Ne6 20.a4 Nd7 21.Na2 f5 22.Nb4 Nf6 23.Ba1 g5 24.Rb1 f4 25.f3** Diagram

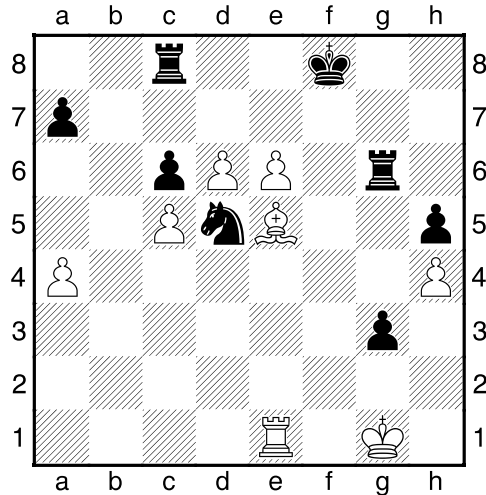


**25...Nh5 26.fxe4** [26.gxf4 Ng3 27.Qf2 Nxf1 28.Rxf1 gxf4 29.fxe4 fxe3 30.Qxe3 dxe4 31.Rf5 -+(-1.93)] **26...Nxc3 27.Qg4 h5 28.Qd1 Nxf1 29.Bxf1 fxe3 30.exd5 Nf4 31.d6 Qd7 32.bxc6?** [32.Bc4+ Better] **32...bxc6** Diagram

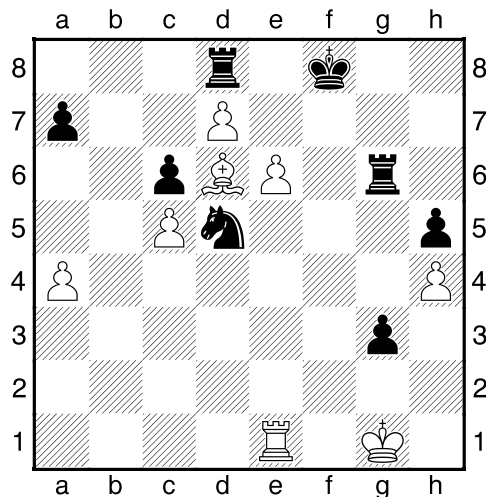


**33.Nd3** Are not good moves here actually [33.Bg2 Not much better 33...Rb8 34.Qb3+ Kh8 35.Re1 Nxc2 36.Kxc2 a5 -+(-6.08); 33.Bc4+ Kh8 34.Qf3 Rb8 35.Kh2 a5 -+(-6.28)] **33...e2 34.Qb3+ Kh8 35.Ne5 exf1Q+ 36.Rxf1 Bxe5 37.dxe5 Re6 38.h4 Qg7 39.Kh2 Nd5 40.Qf3 g4 41.Qf5 Qg6?** [41...g3+ Better 42.Kg1 Qh6 43.Qg5 Qxg5 44.hxg5 Kg7 -+(-7.35)] **42.Qxg6 Rxc6 43.e6+ Kg8 44.Re1** [44.e7! Better 44...g3+ 45.Kg1 Nxe7 46.dxe7 Re6 47.Bf6 Re2 -+(-1.65)] **44...g3+**

**45.Kg1 Kf8?** [45...Rb8 46.d7 Rxe6 47.d8Q+ Rxd8 48.Rxe6 Nf4 Threatens rook and mate 49.Rd6 Re8 50.Bc3 (50.Rd1 Re2 51.Bd4 Rg2+ 52.Kf1 Ra2 53.Kg1 Nh3+ 54.Kf1 g2+ 55.Ke1 Nf4 56.Rd2 Rxa4 -+(-10.57)) 50...Rb8 51.Rd1 Ne2+ 52.Kg2 Nxc3 -+(-5.64)] **46.Be5?**  
Diagram



[46.Rf1+=] **46...Rb8?=-** This lets white back in the game. [46...Rxe6 Why not 47.d7? (47.Rf1+ Ke8 48.Bxg3 (48.Rf5 Rg6 -+(-7.24)) 48...Re2 49.a5 Kd7 50.Rf7+ Ke6 51.Rxa7 (51.Rf3 -+(-7.88)) 51...Rb8 -+(mate in 18)) 47...Rd8 48.Bd6+ Kf7 -+(-8.16)] **47.d7 Rd8 48.Bd6+**  
Diagram





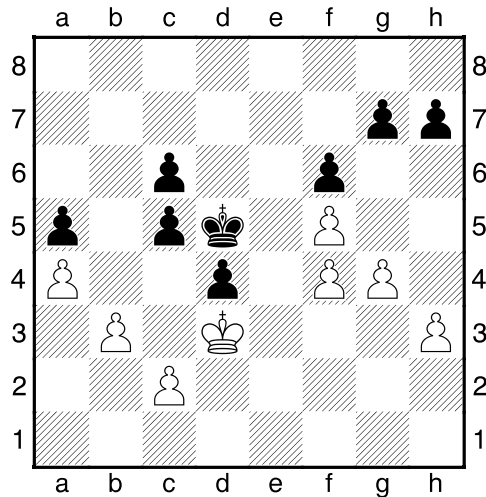
**48...Ne7?** This loses [48...Kg7! 49.e7 Nxe7 50.Rxe7+ Kf6= 51.Rh7 Ke6 (51...Rg7 52.Be5+ Kxe5 53.Rxg7 Kf6 54.Rh7 Kg6 55.Re7=) 52.Re7+=] **49.Rf1+! Kg7 50.Bxe7 Rxe6 51.Bxd8 Re4 52.Bg5 1-0**

**(16) Bill Qian (1623) – John Tyler Madsen (1603) [C62]**

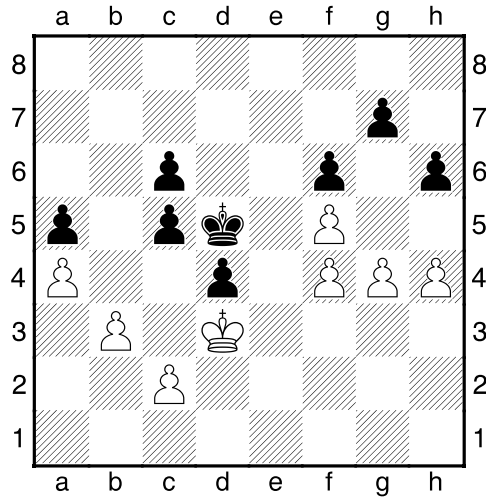
2015 Kansas Open (4), 19.07.2015 (Another Bill Qian game)

I include this game as there is a very interesting King and pawn endgame which white might have won, but only with correct play.

C62: Ruy Lopez: Steinitz Defence **1.e4 e5 2.Nf3 Nc6 3.d4 exd4 4.Nxd4 Nf6 5.Nc3 d6 6.Bb5 Bd7 7.Bxc6 bxc6 8.Qf3** last book move **8...Bg4 9.Qf4 Qd7 10.h3 Be6 11.Qf3 Be7 12.0-0 0-0 13.Be3 c5 14.Nf5 Bxf5 15.exf5 d5 16.Rad1 d4 17.Bg5 c6 18.Bxf6 Bxf6 19.Ne4 Qe7 20.Nxf6+ Qxf6 21.b3 Rfe8 22.Rfe1 Kf8 23.g4 Rxe1+ 24.Rxe1 Re8 25.Rxe8+ Kxe8 26.Qe2+ Qe7 27.Qxe7+ Kxe7 28.Kf1 Kd6 29.Ke2 f6 30.f4 Kd5 31.Kd3 a5** Complicated king and pawn endgame **32.a4** Diagram



Analysis is very complex, but Fritz seems to think 32.h4 is a better way to go. [32.h4 Better 32...h6 33.h5 a4 34.a3 (34.g5 axb3 (34...c4+ Loses; 34...hxg5 Loses right away because of white break through. 35.fxg5 fxg5 36.f6 Ke6 37.fxg7 Kf7 38.h6 g4 39.Ke4 axb3 40.axb3 g3 41.Kf3 g2 42.Kxg2 White winning) 35.axb3 c4+ 36.bxc4+ Kc5 37.c3 dxc3 38.Kxc3 Kb6 39.Kd4 Kb7 40.Kc5 Kc7 41.g6 winning) 34...axb3 35.cxb3 Kd6 36.Kc4 Kc7= 37.a4 Kb6=] **32...h6 33.h4** Diagram

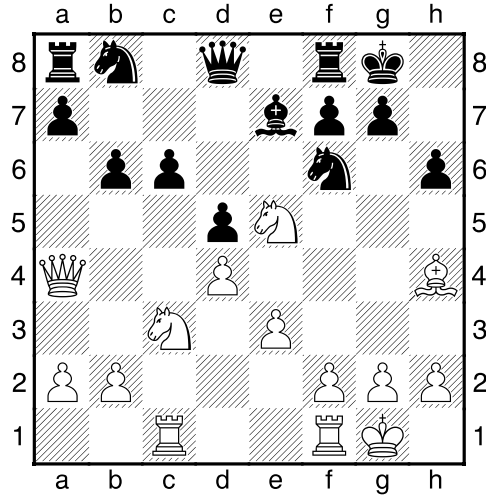


**33...c4+!** Necessary pawn sacrifice. **34.bxc4+ Kc5 35.c3** [35.g5 h5 36.g6 Kd6 37.Kxd4 c5+ White has two extra pawns, but can't win this] **35...dxc3 36.Kxc3 Kd6 37.Kd4 c5+ 38.Ke4 Kc6 39.Kf3 Kd6 40.g5 h5 41.Ke4 Kc6 1/2-1/2**

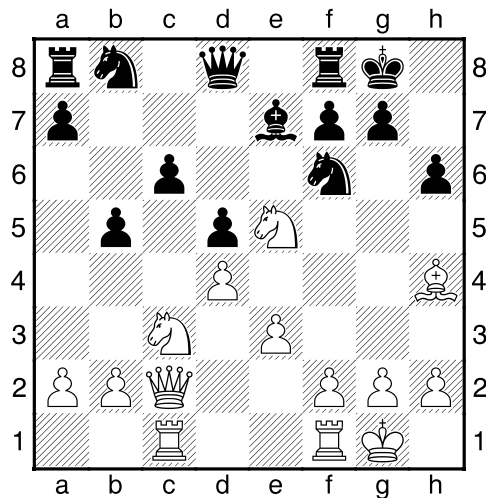
### **(17) William Brown (1514) – Tom Phillips (1710) [D55]**

2015 Kansas Open (3), 18.07.2015

D55: Queen's Gambit Declined: 4 Bg5 Be7: Lines without ...h6 and 6...h6 7 Bxf6 **1.d4 e6 2.c4 d5 3.Nc3 Nf6 4.Bg5 Be7 5.e3 b6 6.cxd5 exd5 7.Nf3 0-0 8.Rc1** last book move **8...Ba6?** [8...Bb7 9.Bd3 Nbd7 10.0-0 c5 Only slight advantage for white  $\pm$  (0.44)] **9.Bxa6 Nxa6 10.0-0 h6 11.Bh4 c6 12.Qa4 Nb8 13.Ne5** Diagram



**13...b5** [13...Qd6 Better; 13...Qd6 14.Bg3 Qe6 15.Ne2 c5 16.Nf4 Qf5 ±1.33)] **14.Qc2** Diagram

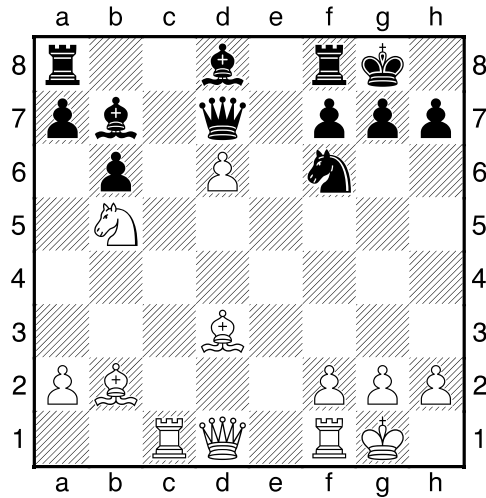


**14...Nh5?** Losing move [14...Re8 Better, but white still has advantage] **15.Bxe7 Qxe7 16.Nxc6! Nxc6 17.Nxd5** (simultaneous attack on knight on c6 and queen on e7) **Qb7 18.Qxc6 Rab8 19.Qxb7 Rxb7 20.Rc5 g6 21.Rfc1 Ng7 22.Rc7** Two pawns up and superior position **22...Rxc7 23.Rxc7 Ra8 24.g3 Ne6 25.Rb7 a6 26.Nc7 Rc8 27.Nxa6 Ra8 28.Nb4 Ra4 1-0**

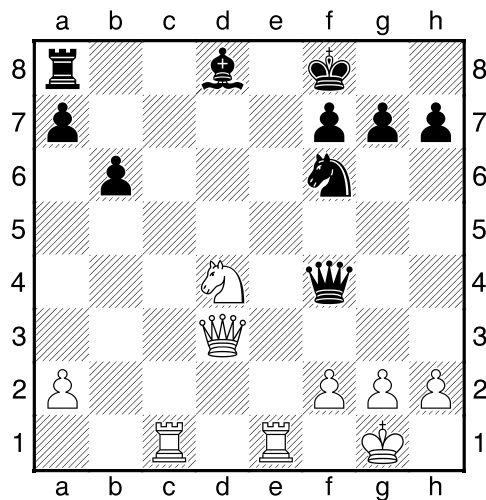
**(18) Gabriel Maurer (1521) – Laurence Coker (1524) [D40]**

2015 Kansas Open (2), 17.07.2015

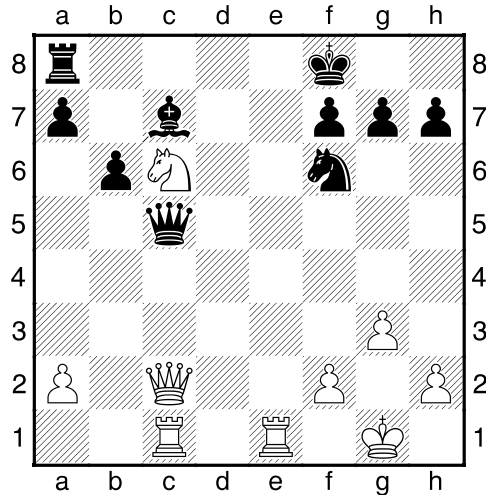
D40: Queen's Gambit Declined: Semi-Tarrasch with 5 e3 1.Nf3 Nf6  
2.c4 c5 3.e3 e6 4.d4 d5 5.Nc3 Nc6 6.Bd3 Be7 7.0-0 0-0 8.b3 b6 last  
book move 9.Ne5 Bb7 10.Bb2 dxc4 11.bxc4 cxd4 12.Nxc6 Bxc6  
13.exd4 Qc7 14.d5 exd5 15.cxd5 Bb7 16.Nb5 Qd7 17.d6 Bd8  
18.Rc1 Diagram



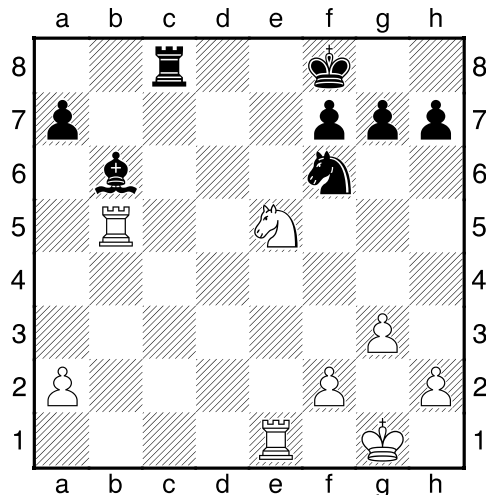
18...Bc6? [18...Rc8 better] 19.Nd4 Be4 20.Re1 Bxd3 21.Qxd3  
Qxd6? 22.Ba3 Qf4 23.Bxf8 Kxf8 Diagram



**24.Nc6** [24.g3! There are no good squares for black queen] **24...Bc7**  
**25.g3 Qd6 26.Qc2 Qc5** Diagram

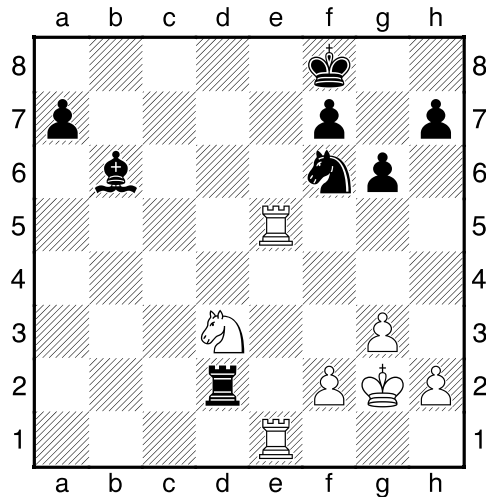


Black tries to sacrifice a pawn to try to get a better square for his dark-squared bishop. White does not have to take black's queen.  
**27.Qxc5+ [27.Qb2 Better] 27...bxc5 28.Rxc5 Bb6 29.Rb5 Rc8**  
**30.Ne5?** Diagram



[30.Nb4 better g6 31.Kg2 Kg7 32.Re2 +-(2.49)] **30...Rc2 31.Nd3**  
**Rxa2 [31...Ng4 Might be a little better 32.Rf1 Rxa2 33.Rb2 Rxb2**  
**34.Nxb2 Nxf2 35.Rxf2 Ke7 36.Nc4 Bxf2+ 37.Kxf2 Ke6** I don't really like this with two pawns for the knight, even if one pawn is passed. ]

32.Rbe5?! [32.Rb2 Better] 32...Rd2 33.Nc5 g6= 34.Kg2 Rc2 35.Nd3 Rd2 36.Nc5 Rc2 37.Nd3 Rd2 Diagram



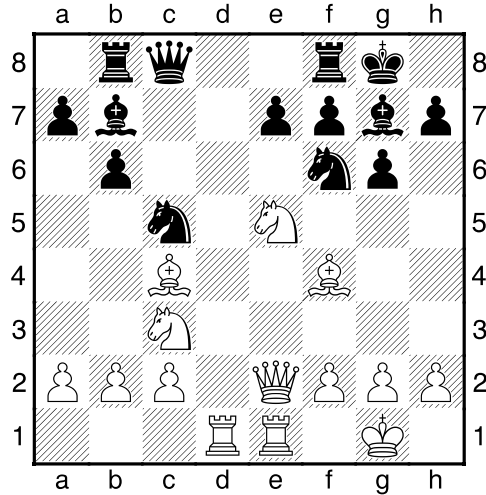
Draw offer and accepted. It is either a repetition of moves or white loses another pawn with check. Fritz says position is equal. 1/2-1/2

## AMATEUR SECTION

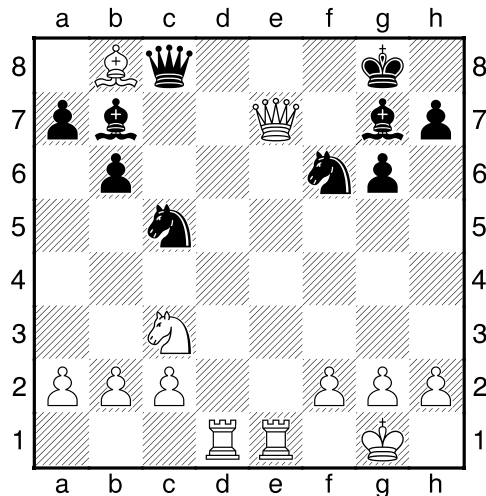
### (19) Daryl Fouard (1349) – Diane Camarda (962) [B70]

2015 Kansas Open (2), 18.07.2015

B70: Sicilian Dragon: 6 g3 and 6 Be2 (without a later Be3) 1.e4 c5 2.Nf3 d6 3.d4 cxd4 4.Nxd4 Nf6 5.Nc3 g6 6.Bc4 Bg7 7.0-0 0-0 8.Re1 last book move 8...Nbd7 9.Be3 Rb8 10.Nf3 b6 11.Qe2 Nc5 12.e5 dxe5 13.Nxe5 Bb7 14.Rad1 Qc7 15.Bf4 Qc8? Diagram



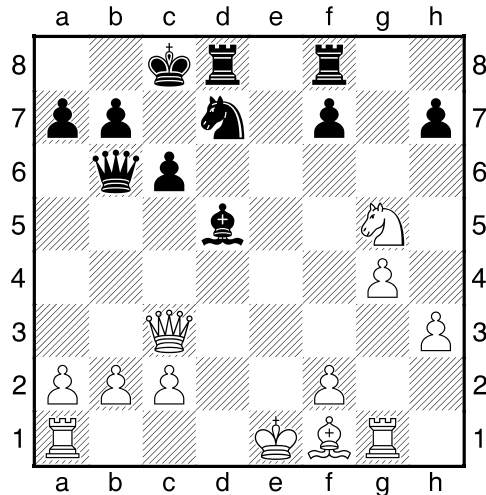
Probably losing move [15...Nh5 Only slight advantage for white after this  $\pm(0.66)$ ] **16.Bxf7+! Rxf7** [16...Kh8 Better] **17.Nxf7 Kxf7?** [17...Qc6 Better, though black is still losing 18.f3 Re8 19.Nd8 Qc8 20.Qc4+ e6 21.Nxb7 Nxb7 22.Qxc8 Rxc8 23.Rxe6  $+-(-5.42)$ ] **18.Qxe7+ Kg8 19.Bxb8** Diagram



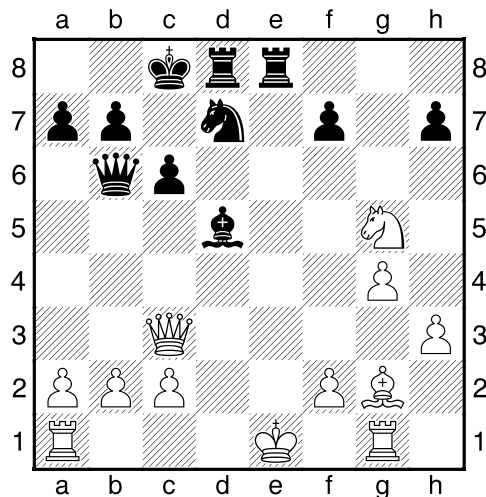
**19...Bf8?** [19...Ncd7 Better, but still losing] **20.Rd8 Qxd8 21.Qxd8 Kg7 22.Be5 1-0**

**(20) Robert Moore (1134) – Edward Nathan Perry (unrated) [A45]** 2015 Kansas Open (5), 19.07.2015

A45: Queen's pawn game 1.d4 Nf6 2.Nc3 c6 3.e4 last book move  
 3...Qa5 4.Bd2 Qb6 5.Bc1 d6 6.h3 e5 7.dxe5 dxe5 8.Nf3 Bb4 9.Bd2  
 Bxc3 10.Bxc3 Nxe4 11.Qe2 Bf5 12.g4 Nxc3 13.Qxe5+ Be6  
 14.Qxg7 Rf8 15.Qxc3 Nd7 16.Ng5 Bd5 17.Rg1 0-0-0= Diagram



**18.Bg2?** Much better is castling. Leaving the king in the middle of the board with an open file can lead to bad things. [18.0-0-0=] **18...Rfe8+** Diagram



**19.Kd2??** [19.Ne4 Better. Loses piece but not game 19...Bxe4 20.0-0-0 -+(-4.21)] **19...Qxf2+** **20.Kd3** [20.Kc1 Alternate move loses a ton of material and white gets mated anyway. 20...Qxg1+ 21.Kd2 Qxg2+

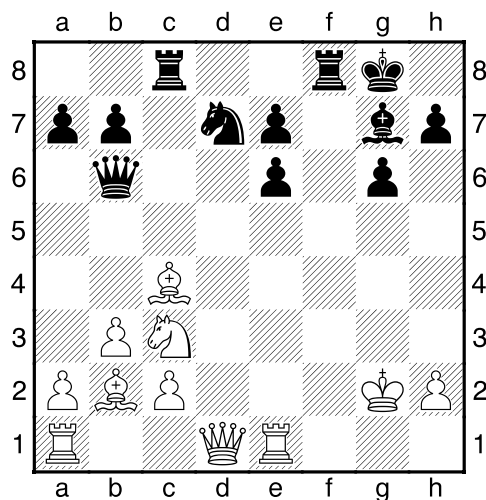


22.Kc1 Qf1+ 23.Kd2 Re2+ 24.Kd3 Re1+ 25.Kd4 Qf4+ 26.Ne4 Qxe4#]  
**20...Qe3# 0-1**

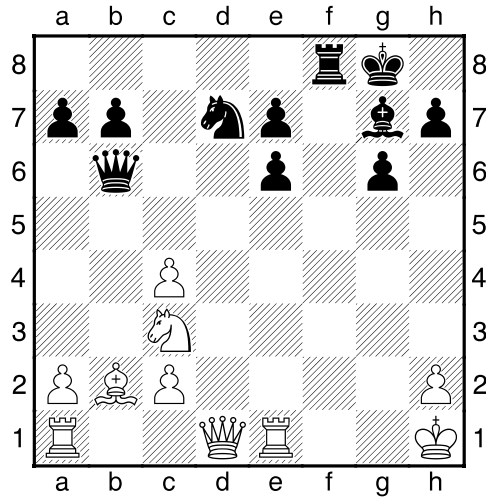
**(21) Daryl Fouard (1349) – Jim Huang (1139) [B70]**

2015 Kansas Open (5), 19.07.2015

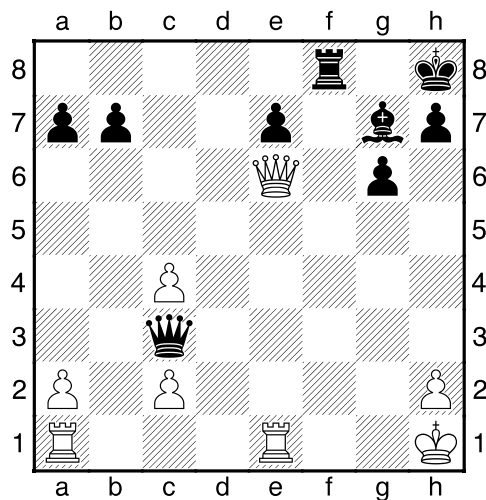
B70: Sicilian Dragon: 6 g3 and 6 Be2 (without a later Be3) **1.e4 c5 2.Nf3 d6 3.d4 cxd4 4.Nxd4 Nf6 5.Nc3 g6 6.Bc4 Bg7 7.0-0 0-0 8.Re1** last book move **8...Nbd7 9.b3 Ne5 10.Be2 Bd7 11.Bb2 Rc8 12.f4 Nc6 13.Nxc6 Bxc6 14.e5 dxex5 15.fxe5 Nd7 16.e6 fxe6 17.Bc4 Qb6+ 18.Kh1 Bxg2+ 19.Kxg2** Diagram



**19...Qc6+?** [19...Rf2+ 20.Kg1 Rxc4 21.Nd5 (21.bxc4? Rxc2+ 22.Kh1 Qxb2 23.Re2 Rxe2 24.Nxe2 Qxa1 25.Qxa1 Bxa1-+ (-9.69)) 21...exd5 22.Qxd5+ e6 23.Qxe6+ Qxe6 24.Rxe6 Rxc2 25.Bxg7 Kxg7 26.Re7+ Rf7-+ (-6.98)] **20.Kg1 Qc5+ 21.Kh1 Qc6+ 22.Kg1 Qb6+ 23.Kh1 Rxc4! 24.bxc4** Diagram



24...Qxb2= [24...Qc6+ Slightly better, but complicated 25.Kg1 Rf5 ♠(-1.28)] 25.Qxd7 Qxc3 26.Qxe6+ Kh8 Diagram

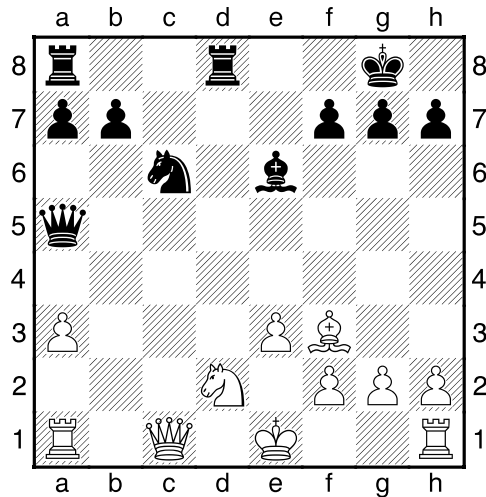


27.Qxe7?? Qf3+ 28.Kg1 Bd4+ Mate in seven 0-1

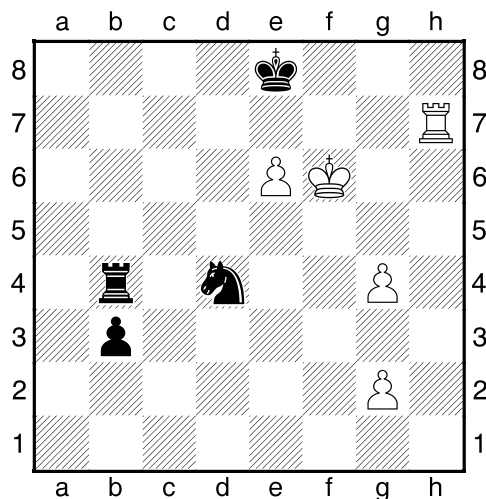
**(22) Todd Easton (1196) – Michael Schoenhofer**

**(unrated) [E51]** 2015 Kansas Open (5), 19.07.2015

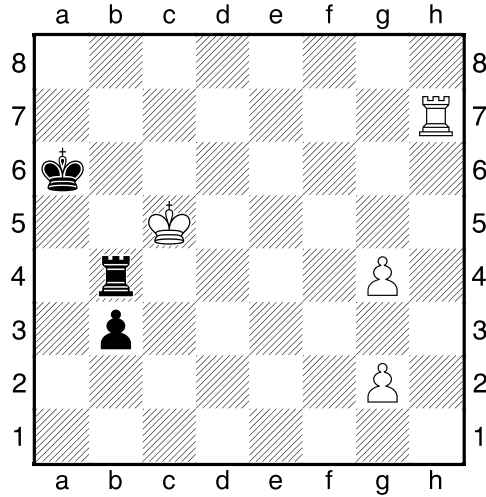
Lots of mistakes, but an interesting rook and pawn endgame. E51: Nimzo-Indian: Rubinstein: 4...0-0 5 Nf3 d5 1.d4 Nf6 2.c4 e6 3.Nc3 Bb4 4.Bd2 d5 5.e3 0-0 6.Nf3 c5 7.a3 Bxc3 8.Bxc3 Ne4 last book move 9.dxc5 Nxc3 10.bxc3 Qa5 11.cxd5 Qxc3+ 12.Nd2 Qxc5 13.dxe6 Bxe6 14.Be2 Rd8 15.Bf3 Nc6 16.Qc1? Qa5 Diagram



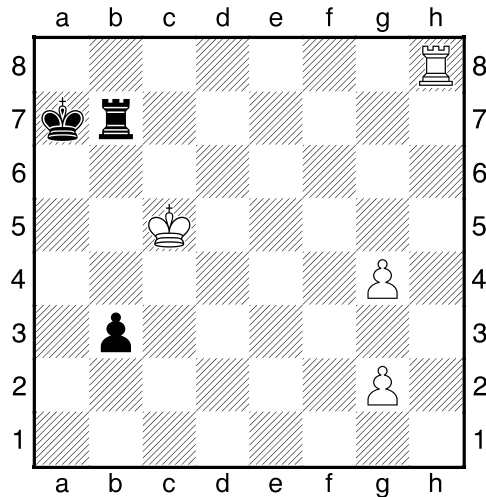
**17.0-0?** Drops a piece, but white had a bad situation with this king in the middle of the board. [17.Qb2 Ne5 18.Be2 Rac8 19.Qb4 Qd5 20.Qd4 Qxg2 21.Qe4 Qxe4 22.Nxe4 Rc2 +(-4.00)] **17...Qxd2 18.Rb1 Qd7 19.Rd1 Qc7 20.h3 Rxd1+ 21.Qxd1 Rd8 22.Qa4 Bd5 23.e4 Ba2 24.Rb2 Be6 25.Re2 Qa5 26.Qxa5 Nxa5 27.e5 Rc8 28.Rd2 b6 29.Bg4 Bxg4 30.hxg4 Nc4 31.Rd7 Nxa3 32.Rxa7 Nc4 33.f4 Rb8 34.Rc7 b5 35.Kf2 Na3 36.f5 b4 37.e6 fxe6 38.fxe6 Kf8? [38...b3! +(-12.87)] 39.Rf7+ Ke8 40.Rxg7 Rd8? [40...Rb5! +(-8.73)] 41.Rb7 Nc2 42.Kf3 b3 43.Kf4 Rd4+ 44.Kf5 Rb4 45.Rxh7 Nd4+ 46.Kf6** Diagram



**46...Nxe6 47.Kxe6 Kd8?=[47...Rb6+! 48.Kf5 b2 49.Rh8+ Kf7 50.Rh7+ Kf8 -+(-8.05)] 48.Kd6 Kc8 49.Kc6? [49.Rh1! Rxc4 50.Kc5 Rg5+ 51.Kb4 b2 52.Kc3 Rxc2 53.Rb1=] 49...Kb8?=[49...Rc4+ 50.Kd5 b2 51.Rh8+ Kc7 52.Rh7+ Kb6 53.Rh6+ Kb7 -+(-6.47) 54.Rh7+ Rc7 55.Rh1 Rc1 56.Rh7+ Ka6 57.Rh6+ Kb5 58.Rh8 Rd1+ 59.Ke6 Kc6 60.Rb8 Rd6+ 61.Kf7 Rd7+ 62.Kg6 Rb7 -+(-11.63)] 50.Rh8+ Ka7 51.Rh7+ Ka6 52.Kc5? Diagram**



**52...Rb7? [52...b2 53.Rh1 b1Q 54.Rxb1 Rxb1 55.Kd4 Rb4+ 56.Ke3 Rxc4 57.Kf3 Rc4 58.g4 Kb5 59.g5 Kc5 -+(-8.99)] 53.Rh8? [53.Rh1 b2 54.Rb1 Ka5 55.g5 Rb5+ 56.Kc4 Rxc5 57.Rxb2 Rg8=] 53...Ka7 Diagram**

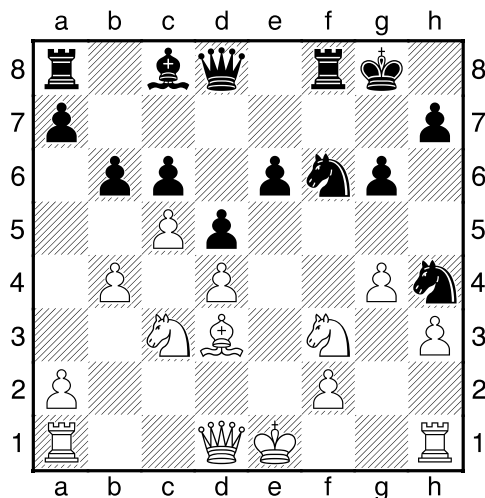


**54.Kc4? Last mistake [54.Rh1=] 54...b2 0-1**

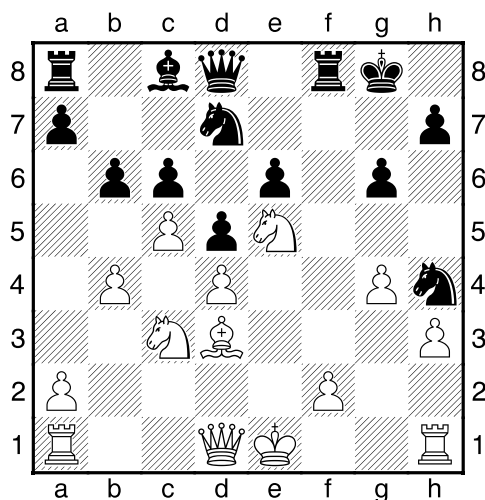
**(23) Michael Schoenhofer (unrated) – Adam Weller**

**(1123) [A40]** 2015 Kansas Open (4), 19.07.2015

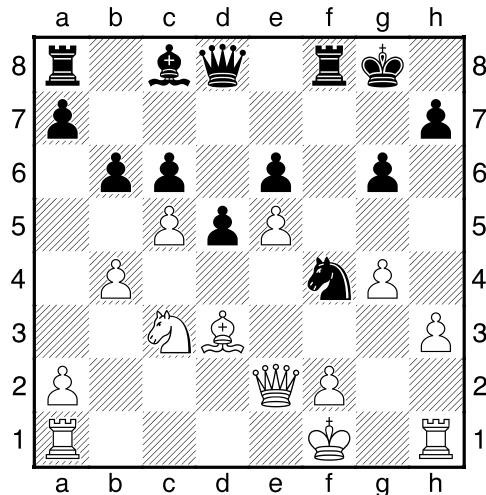
A40: Unusual replies to 1 d4 (Adam won Amateur section as top non-scholastic player.) **1.d4 g6 2.c4 Bg7 3.e4** last book move **3...e6**  
**4.Nc3 c6 5.Nf3 Ne7 6.Bg5 d5 7.e5 0-0 8.b4 Nd7 9.c5 f6 10.exf6**  
**Bxf6 11.Bxf6 Nxf6 12.Bd3 Nf5 13.h3 b6 14.g4 Nh4?** Diagram



**15.Ne5?** [15.Nxh4 Black's piece was unprotected. +- (2.07)] **15...Nd7**  
Diagram



**16.Qe2?** [16.Nxc6 Qf6 -+(-1.99)] **16...Nxe5 17.dxe5 Ng2+ 18.Kf1 Nf4** Diagram

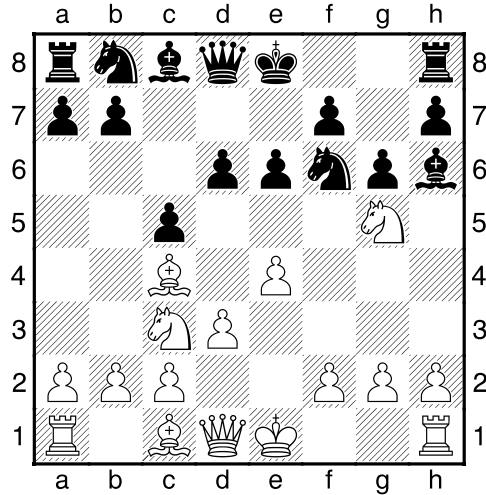


**19.Qe3?** Walking into a pawn fork [19.Qf3 -+(-3.55)] **19...d4 20.Qe4 Nxd3 21.Qxd3 dxc3 22.Qxc3 Ba6+ 23.Kg2 Qd5+ 24.Kg1 Rf3 25.Qb2 Raf8 26.Rh2 Rd3 27.Qc2 Qxe5 28.Rc1 Bb5 29.a4 Ba6 30.cxb6 Rc8 31.bxa7 Rd7 32.a8Q Rxa8 33.Qxc6 Rc8 34.Qxd7 Rxc1+ 35.Kg2 Bf1+ 36.Kf3 Rc3+ 0-1**

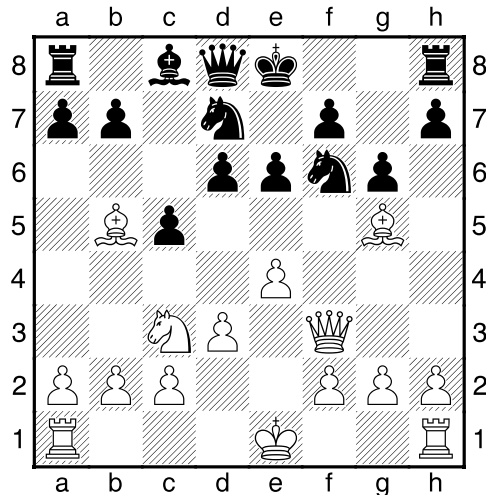
**(24) Liam McKinney (Unrated) – Austin Tran (675) [B50]**

2015 Kansas Open (4), 19.07.2015

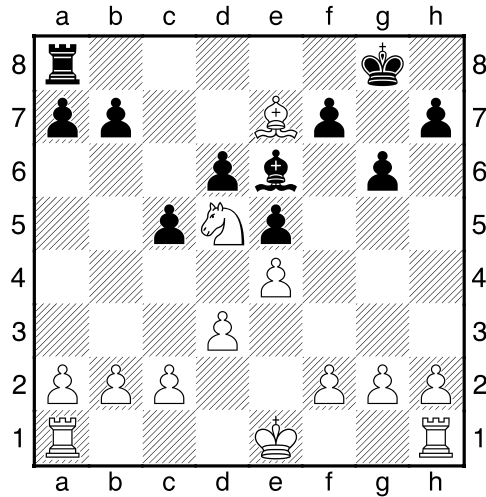
B50: Sicilian: 2...d6, Miscellaneous (Instructive game on not trading off dark-squared bishop. And, has interesting mating pattern.) **1.e4 c5 2.Nf3 d6 3.Bc4 Nf6 4.Ng5** last book move **4...e6 5.d3 g6 6.Nc3 Bh6?** Diagram



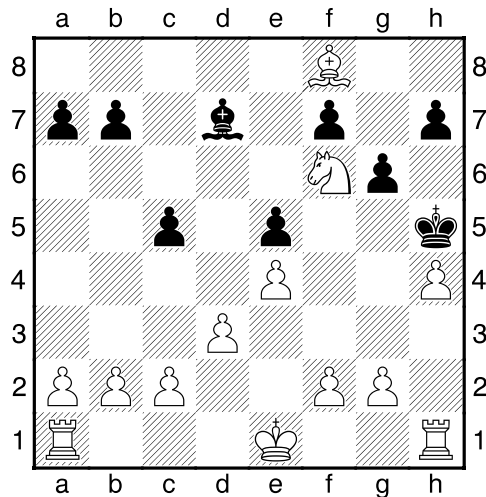
**7.Qf3** [7.Nxf7! Kxf7 8.Bxh6 +-(2.71)] **7...Bxg5?** Giving up the dark-squared bishop results in dark-squared holes around the black king. [7...Bg7= Save the bishop] **8.Bxg5 Nbd7 9.Bb5!** Diagram



**9...0-0 10.Bxd7 Qxd7** [10...h6 better, though still losing 11.Bxf6 Qxd7 +-(7.18)] **11.Qxf6 Qd8** Giving up material, otherwise 12.Bh6 with mate follows. **12.Qxd8 Rxd8 13.Bxd8 e5 14.Nd5 Be6 15.Be7** Diagram



**15...Re8?** Walks into a knight fork. **16.Nf6+ Kg7 17.Nxe8+ Kh6 18.Bxd6 Bd7 19.Bf8+ Kg5 20.h4+ Kh5** [20...Kf4 21.Bh6+ g5 22.Bxg5+ Kg4 23.Nf6#; 20...Kg4 21.Nf6+ Kf4 22.Bh6+ g5 23.Bxg5#] **21.Nf6#** Diagram



Interesting mate. **1-0**

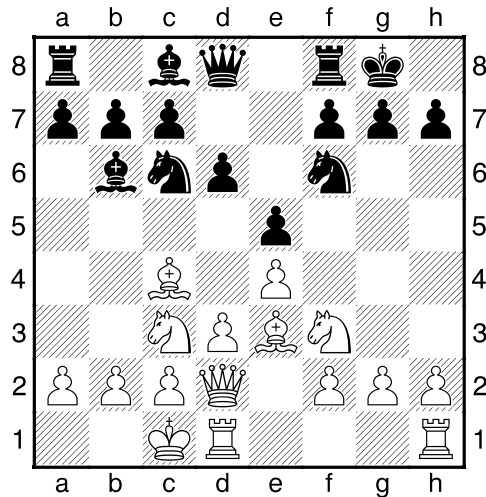
**(25) Shahrzad Hajiarbabi (954) – Rajin Nagpal (1135)**

**[C50]** 2015 Kansas Open (4), 19.07.2015

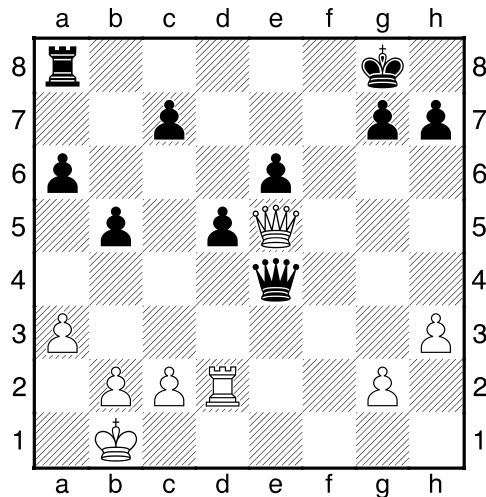
C50: Hungarian Defence and Giuoco Pianissimo White misses a simple tactic by black. Rajin finished first overall in Amateur section



as scholastic finisher. 1.e4 e5 2.Nf3 Nc6 3.Bc4 Bc5 4.d3 Nf6 5.Nc3 d6 6.Be3 Bb6 7.Qd2 0-0 8.0-0-0 Diagram



last book move 8...Bd4 9.Kb1 a6 10.Ne2 b5 11.Bb3 Bc5 12.a3 Be6 13.Bxe6 fxe6 14.Ng5 Qe7 15.d4 exd4 16.Nxd4 Nxd4 17.Bxd4 Bxd4 18.Qxd4 Ng4 19.f3 Qxg5 20.fxg4 Qxg4 21.Rd2 Rf4 22.h3 Qg6 23.Re1 d5 24.Qe5 Rxe4 25.Rxe4 Qxe4 Diagram



26.Qxc7? Misses a simple tactic by black. [26.Qxe4 dxe4 27.Rd4 Kf7 28.Rxe4 Slight advantage for black, but could be drawn in a rook and pawn endgame. ] 26...Qe1+ 27.Ka2 Qxd2 28.Qc6 Rb8 29.Qxe6+ Kh8 30.Qxa6 Qxc2 31.Qd6 Qc4+ 32.Kb1 Re8 33.Qg3 0-1

**THE  
END**